

Datasheet for ABIN746558
anti-CRTC1 antibody (pSer151)[Go to Product page](#)

4 Images

Overview

Quantity:	100 µL
Target:	CRTC1
Binding Specificity:	pSer151
Reactivity:	Human, Chicken
Host:	Rabbit
Clonality:	Polyclonal
Conjugate:	This CRTC1 antibody is un-conjugated
Application:	Western Blotting (WB), ELISA, Immunofluorescence (Paraffin-embedded Sections) (IF (p)), Immunofluorescence (Cultured Cells) (IF (cc)), Immunohistochemistry (Paraffin-embedded Sections) (IHC (p)), Immunohistochemistry (Frozen Sections) (IHC (fro))

Product Details

Immunogen:	KLH conjugated synthetic phosphopeptide derived from human Torc1 around the phosphorylation site of Ser151
Isotype:	IgG
Specificity:	Due to the highly conserved nature of this protein, this antibody will react with Torc3 when phosphorylated at Ser162 across the listed species due to homology.
Cross-Reactivity:	Chicken, Human
Predicted Reactivity:	Mouse,Rat,Dog,Cow,Pig,Horse,Rabbit
Purification:	Purified by Protein A.

Target Details

Target:	CRTC1
Alternative Name:	Torc1 (CRTC1 Products)
Background:	<p>Synonyms: MECT1, TORC1, TORC-1, WAMTP1, CREB-regulated transcription coactivator 1, Mucoepidermoid carcinoma translocated protein 1, Transducer of regulated cAMP response element-binding protein 1, Transducer of CREB protein 1, CRTC1, KIAA0616</p> <p>Background: Transcriptional coactivator for CREB1 which activates transcription through both consensus and variant cAMP response element (CRE) sites. Acts as a coactivator, in the SIK/TORC signaling pathway, being active when dephosphorylated and acts independently of CREB1 'Ser-133' phosphorylation. Enhances the interaction of CREB1 with TAF4. Regulates the expression of specific CREB-activated genes such as the steroidogenic gene, StAR. Potent coactivator of PGC1alpha and inducer of mitochondrial biogenesis in muscle cells. Also coactivator for TAX activation of the human T-cell leukemia virus type 1 (HTLV-1) long terminal repeats (LTR). In the hippocampus, involved in late-phase long-term potentiation (L-LTP) maintenance at the Schaffer collateral-CA1 synapses. May be required for dendritic growth of developing cortical neurons (By similarity). In concert with SIK1, regulates the light-induced entrainment of the circadian clock. In response to light stimulus, coactivates the CREB-mediated transcription of PER1 which plays an important role in the photic entrainment of the circadian clock.</p>
Gene ID:	23373
UniProt:	Q6UUV9

Application Details

Application Notes:	WB 1:300-5000 ELISA 1:500-1000 IHC-P 1:200-400 IHC-F 1:100-500 IF(IHC-P) 1:50-200 IF(IHC-F) 1:50-200 IF(ICC) 1:50-200
Restrictions:	For Research Use only

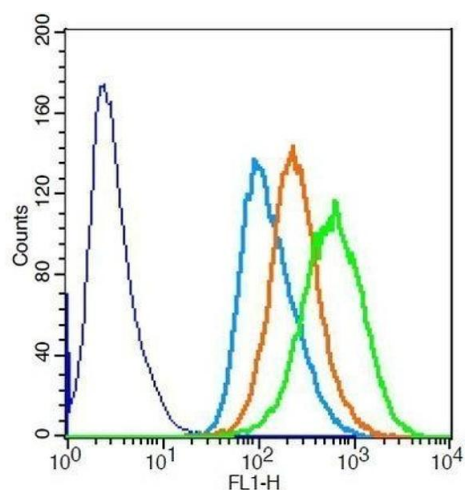
Handling

Format:	Liquid
---------	--------

Handling

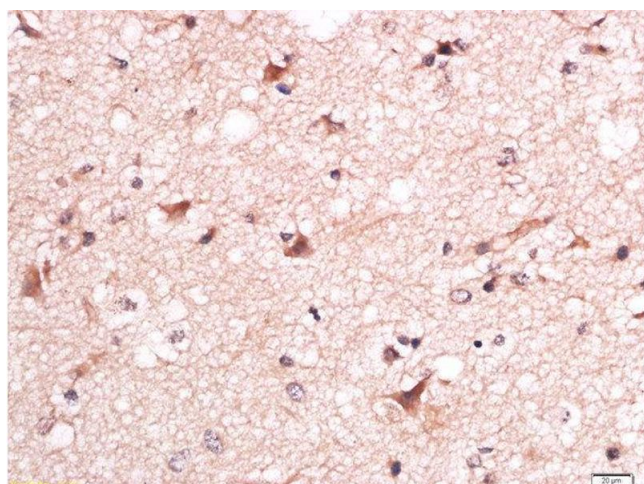
Concentration:	1 µg/µL
Buffer:	0.01M TBS(pH 7.4) with 1 % BSA, 0.02 % Proclin300 and 50 % Glycerol.
Preservative:	ProClin
Precaution of Use:	This product contains ProClin: a POISONOUS AND HAZARDOUS SUBSTANCE, which should be handled by trained staff only.
Storage:	4 °C, -20 °C
Storage Comment:	Shipped at 4°C. Store at -20°C for one year. Avoid repeated freeze/thaw cycles.
Expiry Date:	12 months

Images



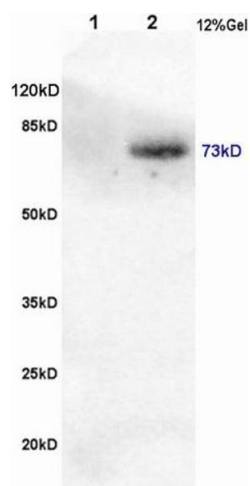
Flow Cytometry

Image 1. HeLa cells probed with Rabbit Anti-Torc1 (Ser151) Polyclonal Antibody .



Immunohistochemistry (Paraffin-embedded Sections)

Image 2. Formalin-fixed and paraffin embedded human brain glioma labeled with Anti-Torc1 (Ser151) Polyclonal Antibody, Unconjugated at 1:200 followed by conjugation to the secondary antibody and DAB staining.



SDS-PAGE

Image 3. L1 rat brain, L2 human colon carcinoma lysates probed (ABIN746558) at 1:200 in 4 °C. Followed by conjugation to secondary antibody at 1:3000 90min in 37 °C. Predicted band and observed band size: 73kDa

Please check the [product details page](#) for more images. Overall 4 images are available for ABIN746558.