

Datasheet for ABIN746873  
**anti-WEE1 antibody (pSer642)**[Go to Product page](#)

## 4 Images

## Overview

Quantity:	100 µL
Target:	WEE1
Binding Specificity:	pSer642
Reactivity:	Human
Host:	Rabbit
Clonality:	Polyclonal
Conjugate:	This WEE1 antibody is un-conjugated
Application:	Western Blotting (WB), ELISA, Immunofluorescence (Cultured Cells) (IF (cc)), Immunofluorescence (Paraffin-embedded Sections) (IF (p)), Immunohistochemistry (Paraffin-embedded Sections) (IHC (p)), Immunohistochemistry (Frozen Sections) (IHC (fro))

## Product Details

Immunogen:	KLH conjugated synthetic phosphopeptide derived from human Wee1 around the phosphorylation site of Ser642 [SV(p-S)LT]
Isotype:	IgG
Predicted Reactivity:	Human,Mouse,Rat,Dog,Cow,Pig,Rabbit
Purification:	Purified by Protein A.

## Target Details

Target:	WEE1
Alternative Name:	Wee1 ( <a href="#">WEE1 Products</a> )

## Target Details

Background:	<p>Synonyms: WEE1A, WEE1hu, Wee1-like protein kinase, Wee1A kinase, WEE1</p> <p>Background: Acts as a negative regulator of entry into mitosis (G2 to M transition) by protecting the nucleus from cytoplasmically activated cyclin B1-complexed CDK1 before the onset of mitosis by mediating phosphorylation of CDK1 on 'Tyr-15'. Specifically phosphorylates and inactivates cyclin B1-complexed CDK1 reaching a maximum during G2 phase and a minimum as cells enter M phase. Phosphorylation of cyclin B1-CDK1 occurs exclusively on 'Tyr-15' and phosphorylation of monomeric CDK1 does not occur. Its activity increases during S and G2 phases and decreases at M phase when it is hyperphosphorylated. A correlated decrease in protein level occurs at M/G1 phase, probably due to its degradation.</p>
Gene ID:	7465
UniProt:	<a href="#">P30291</a>
Pathways:	<a href="#">Cell Division Cycle</a> , <a href="#">Mitotic G1-G1/S Phases</a> , <a href="#">M Phase</a>

## Application Details

Application Notes:	<p>WB 1:300-5000</p> <p>ELISA 1:500-1000</p> <p>IHC-P 1:200-400</p> <p>IHC-F 1:100-500</p> <p>IF(IHC-P) 1:50-200</p> <p>IF(IHC-F) 1:50-200</p> <p>IF(ICC) 1:50-200</p>
Restrictions:	For Research Use only

## Handling

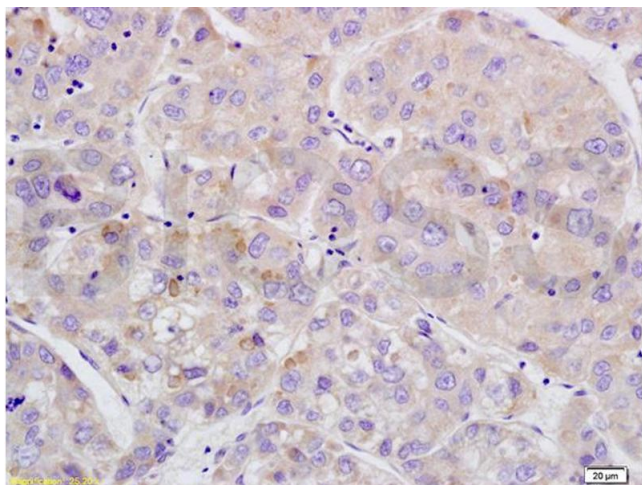
Format:	Liquid
Concentration:	1 µg/µL
Buffer:	0.01M TBS( pH 7.4) with 1 % BSA, 0.02 % Proclin300 and 50 % Glycerol.
Preservative:	ProClin
Precaution of Use:	This product contains ProClin: a POISONOUS AND HAZARDOUS SUBSTANCE, which should be handled by trained staff only.
Storage:	4 °C,-20 °C

## Handling

Storage Comment: Shipped at 4°C. Store at -20°C for one year. Avoid repeated freeze/thaw cycles.

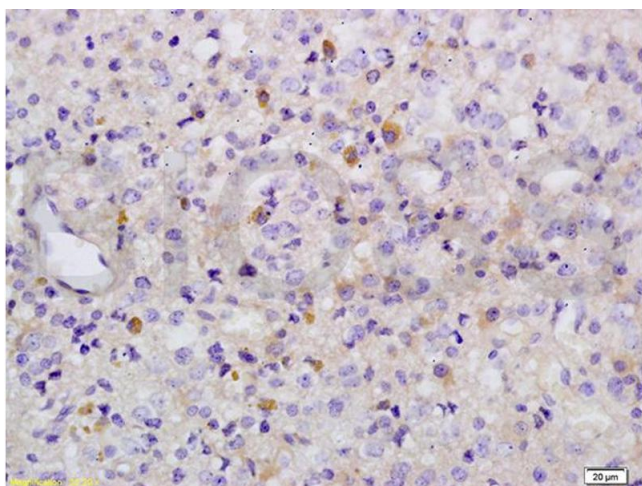
Expiry Date: 12 months

## Images



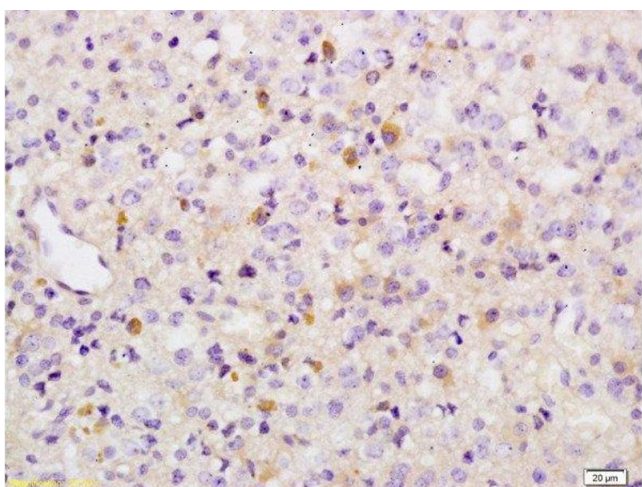
### Immunohistochemistry

**Image 1.** Formalin-fixed and paraffin embedded human brain glioma tissue labeled with Anti-Phospho-Wee1(Ser642) Polyclonal Antibody, Unconjugated (ABIN746873) at 1:200 followed by conjugation to the secondary antibody and DAB staining



### Immunohistochemistry

**Image 2.** Formalin-fixed and paraffin embedded human liver carcinoma labeled with Anti-Phospho-Wee1(Ser642) Polyclonal Antibody, Unconjugated (ABIN746873) at 1:200 followed by conjugation to the secondary antibody and DAB



### Immunohistochemistry (Paraffin-embedded Sections)

**Image 3.** Formalin-fixed and paraffin embedded human brain glioma tissue labeled with Anti-Phospho-Wee1(Ser642) Polyclonal Antibody, Unconjugated at 1:200 followed by conjugation to the secondary antibody and DAB staining

Please check the [product details page](#) for more images. Overall 4 images are available for ABIN746873.