

Datasheet for ABIN7472967

anti-Syndecan 1 antibody (FITC)



[Go to Product page](#)

1 Image

Overview

Quantity:	25 µg
Target:	Syndecan 1 (SDC1)
Reactivity:	Human
Host:	Mouse
Clonality:	Monoclonal
Conjugate:	This Syndecan 1 antibody is conjugated to FITC
Application:	Flow Cytometry (FACS), Immunohistochemistry (IHC), Immunohistochemistry (Paraffin-embedded Sections) (IHC (p)), Immunohistochemistry (Frozen Sections) (IHC (fro))

Product Details

Immunogen:	U266 cell line.
	Type of Immunogen: Cells
Isotype:	IgG1
Specificity:	Recognizes a heparan sulfate rich membrane glycoprotein of 200kD known as Syndecan-1 (CD138). Syndecan functions as a receptor for collagen, fibronectin and thrombospondin. Stains all plasma cells and plasma cell lines. No staining of other leucocytes is seen in peripheral blood or bone marrow, although some ALL cell lines express the antigen weakly.
Purification:	Protein G purified

Target Details

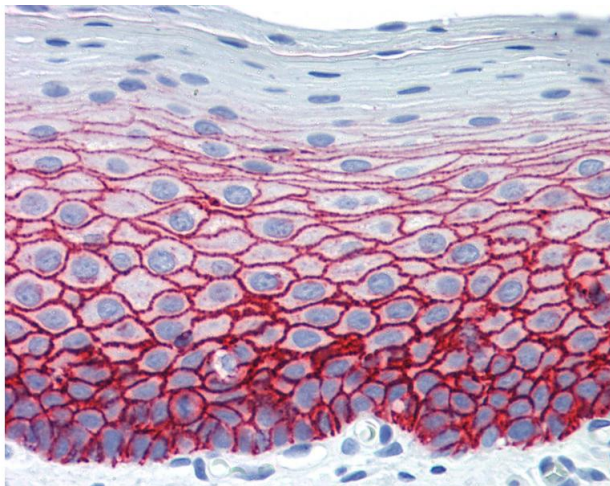
Target:	Syndecan 1 (SDC1)
Alternative Name:	SDC1 / Syndecan 1 / CD138 (SDC1 Products)
Background:	Name/Gene ID: SDC1 Synonyms: SDC1, CD138 antigen, SDC, SYND1, Syndecan, Syndecan 1, Syndecan-1, CD138, Syndecan proteoglycan 1
Gene ID:	6382
Pathways:	Glycosaminoglycan Metabolic Process , Regulation of Muscle Cell Differentiation , Skeletal Muscle Fiber Development , Lipid Metabolism

Application Details

Application Notes:	Approved: Flo (1:1), IHC, IHC-Fr, IHC-P Usage: The applications listed have been tested for the unconjugated form of this product. Other forms have not been tested. Flow Cytometry: Use 10 µL of the suggested working dilution to label 10 ⁶ cells in 100 µL. Method sheets are available on request.
Comment:	Target Species of Antibody: Human
Restrictions:	For Research Use only

Handling

Format:	Liquid
Concentration:	Lot specific
Buffer:	PBS, 0.09 % sodium azide, 1 % BSA.
Preservative:	Sodium azide
Precaution of Use:	This product contains Sodium azide: a POISONOUS AND HAZARDOUS SUBSTANCE which should be handled by trained staff only.



Immunohistochemistry

Image 1. Anti-SDC1 / Syndecan 1 / CD138 antibody IHC staining of human tonsil. Immunohistochemistry of formalin-fixed, paraffin-embedded tissue after heat-induced antigen retrieval. This image was taken for the unconjugated form of this product. Other forms ...