



Datasheet for ABIN747473
anti-Id2 antibody (AA 31-134)



[Go to Product page](#)

2 Images

Overview

Quantity:	100 µL
Target:	Id2
Binding Specificity:	AA 31-134
Reactivity:	Rat
Host:	Rabbit
Clonality:	Polyclonal
Conjugate:	This Id2 antibody is un-conjugated
Application:	ELISA, Immunofluorescence (Cultured Cells) (IF (cc)), Immunofluorescence (Paraffin-embedded Sections) (IF (p)), Immunohistochemistry (Paraffin-embedded Sections) (IHC (p)), Immunohistochemistry (Frozen Sections) (IHC (fro))

Product Details

Immunogen:	KLH conjugated synthetic peptide derived from human GIG8/ID2
Isotype:	IgG
Specificity:	Due to the similarity of this protein with ID1, this antibody has a chance to have light cross-reactivity with ID1 due to a 77 % sequence similarity in the range of our immunogen.
Cross-Reactivity:	Rat
Predicted Reactivity:	Human,Mouse,Dog,Cow,Pig,Horse,Chicken,Rabbit
Purification:	Purified by Protein A.

Target Details

Target: Id2

Alternative Name: ID2 ([Id2 Products](#))

Background: Synonyms: GIG8, ID2A, ID2H, bHLHb26, DNA-binding protein inhibitor ID-2, Class B basic helix-loop-helix protein 26, Inhibitor of DNA binding 2, Inhibitor of differentiation 2, ID2

Background: Transcriptional regulator (lacking a basic DNA binding domain) which negatively regulates the basic helix-loop-helix (bHLH) transcription factors by forming heterodimers and inhibiting their DNA binding and transcriptional activity. Implicated in regulating a variety of cellular processes, including cellular growth, senescence, differentiation, apoptosis, angiogenesis, and neoplastic transformation. Inhibits skeletal muscle and cardiac myocyte differentiation. Regulates the circadian clock by repressing the transcriptional activator activity of the CLOCK-ARNTL/BMAL1 heterodimer. Restricts the CLOCK and ARNTL/BMAL1 localization to the cytoplasm. Plays a role in both the input and output pathways of the circadian clock: in the input component, is involved in modulating the magnitude of photic entrainment and in the output component, contributes to the regulation of a variety of liver clock-controlled genes involved in lipid metabolism.

Gene ID: 3398

UniProt: [Q02363](#)

Application Details

Application Notes: ELISA 1:500-1000
IHC-P 1:200-400
IHC-F 1:100-500
IF(IHC-P) 1:50-200
IF(IHC-F) 1:50-200
IF(ICC) 1:50-200

Restrictions: For Research Use only

Handling

Format: Liquid

Concentration: 1 µg/µL

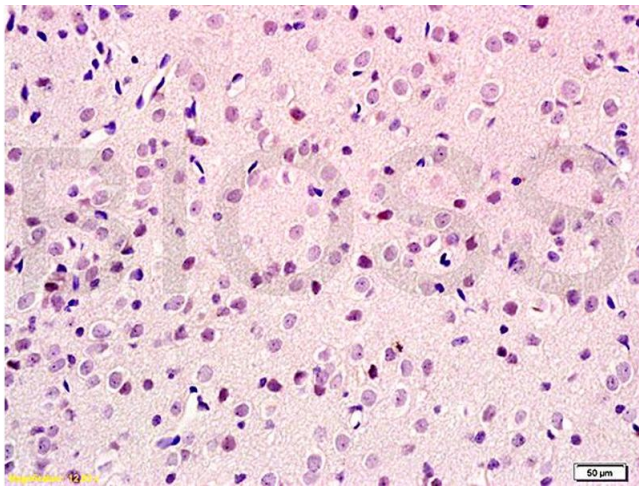
Buffer: 0.01M TBS(pH 7.4) with 1 % BSA, 0.02 % Proclin300 and 50 % Glycerol.

Preservative: ProClin

Handling

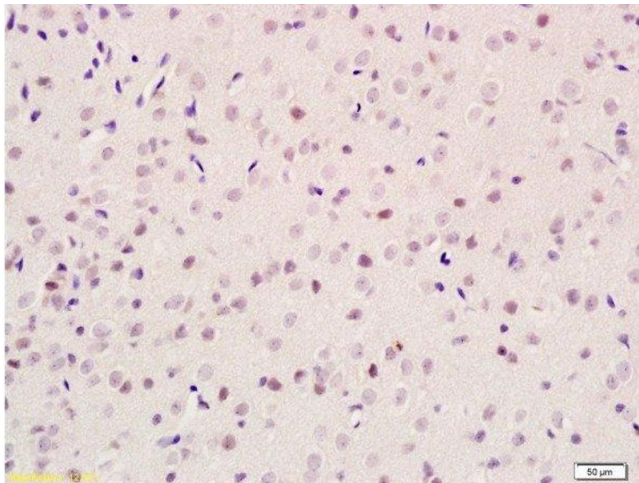
Precaution of Use:	This product contains ProClin: a POISONOUS AND HAZARDOUS SUBSTANCE, which should be handled by trained staff only.
Storage:	4 °C, -20 °C
Storage Comment:	Shipped at 4°C. Store at -20°C for one year. Avoid repeated freeze/thaw cycles.
Expiry Date:	12 months

Images



Immunohistochemistry

Image 1. Formalin-fixed and paraffin embedded rat brain tissue labeled with Anti-GIG8/ID2 Polyclonal Antibody, Unconjugated (ABIN747473) at 1:100 followed by conjugation to the secondary antibody and DAB staining



Immunohistochemistry (Paraffin-embedded Sections)

Image 2. Formalin-fixed and paraffin embedded rat brain tissue labeled with Anti-GIG8/ID2 Polyclonal Antibody, Unconjugated at 1:100 followed by conjugation to the secondary antibody and DAB staining