

Datasheet for ABIN747593  
**anti-ATOH1 antibody (AA 145-250)**[Go to Product page](#)

## 1 Image

## Overview

Quantity:	100 µL
Target:	ATOH1
Binding Specificity:	AA 145-250
Reactivity:	Rat
Host:	Rabbit
Clonality:	Polyclonal
Conjugate:	This ATOH1 antibody is un-conjugated
Application:	ELISA, Immunohistochemistry (Paraffin-embedded Sections) (IHC (p)), Immunofluorescence (Cultured Cells) (IF (cc)), Immunofluorescence (Paraffin-embedded Sections) (IF (p)), Immunohistochemistry (Frozen Sections) (IHC (fro))

## Product Details

Immunogen:	KLH conjugated synthetic peptide derived from human MATH1
Isotype:	IgG
Cross-Reactivity:	Rat
Predicted Reactivity:	Human, Mouse
Purification:	Purified by Protein A.

## Target Details

Target:	ATOH1
---------	-------

## Target Details

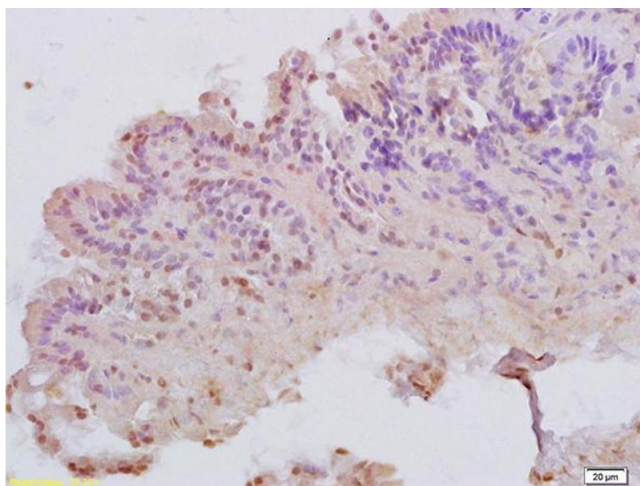
Alternative Name:	MATH1 ( <a href="#">ATOH1 Products</a> )
Background:	<p>Synonyms: ATH1, HATH1, MATH-1, bHLHa14, Protein atonal homolog 1, Class A basic helix-loop-helix protein 14, Helix-loop-helix protein hATH-1, ATOH1</p> <p>Background: Transcriptional regulator. Activates E box-dependent transcription in collaboration with TCF3/E47, but the activity is completely antagonized by the negative regulator of neurogenesis HES1. Plays a role in the differentiation of subsets of neural cells by activating E box-dependent transcription (By similarity).</p>
Gene ID:	474
UniProt:	<a href="#">Q92858</a>

## Application Details

Application Notes:	<p>ELISA 1:500-1000</p> <p>IHC-P 1:200-400</p> <p>IHC-F 1:100-500</p> <p>IF(IHC-P) 1:50-200</p> <p>IF(IHC-F) 1:50-200</p> <p>IF(ICC) 1:50-200</p>
Restrictions:	For Research Use only

## Handling

Format:	Liquid
Concentration:	1 µg/µL
Buffer:	0.01M TBS( pH 7.4) with 1 % BSA, 0.02 % Proclin300 and 50 % Glycerol.
Preservative:	ProClin
Precaution of Use:	This product contains ProClin: a POISONOUS AND HAZARDOUS SUBSTANCE, which should be handled by trained staff only.
Storage:	4 °C,-20 °C
Storage Comment:	Shipped at 4°C. Store at -20°C for one year. Avoid repeated freeze/thaw cycles.
Expiry Date:	12 months



### Immunohistochemistry

**Image 1.** Formalin-fixed and paraffin embedded rat colitis tissue labeled with Anti-MATH1 Polyclonal Antibody, Unconjugated (ABIN747593) at 1:200 followed by conjugation to the secondary antibody and DAB staining