



[Go to Product page](#)

Datasheet for ABIN7477373

Recombinant anti-ACE2 antibody (AA 705-805)

3 Images

Overview

Quantity:	1 mL
Target:	ACE2
Binding Specificity:	AA 705-805
Reactivity:	Human
Host:	Rabbit
Antibody Type:	Recombinant Antibody
Clonality:	Monoclonal
Conjugate:	This ACE2 antibody is un-conjugated
Application:	Immunohistochemistry (IHC)

Product Details

Immunogen:	Recombinant fragment (around aa705-805) of human ACE2 (exact sequence is proprietary)
Clone:	MSVA-919R
Isotype:	IgG

Target Details

Target:	ACE2
Alternative Name:	ACE2 (ACE2 Products)
Background:	Angiotensin I converting enzyme 2,ACE2 antibody validated for immunohistochemistry on 76 different Normal Tissues

Target Details

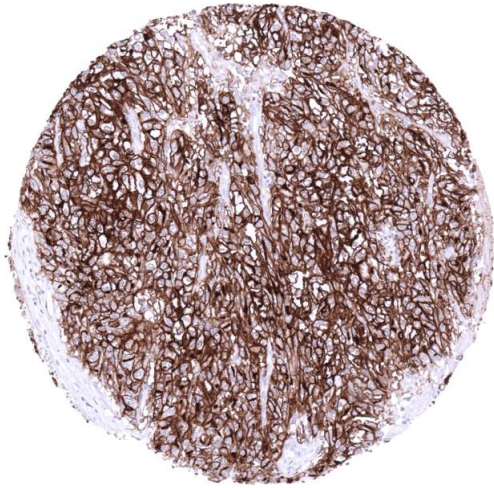
UniProt:	Q9BYF1
Pathways:	ACE Inhibitor Pathway , Peptide Hormone Metabolism , Regulation of Systemic Arterial Blood Pressure by Hormones , Feeding Behaviour

Application Details

Application Notes:	IHC 1:100-1:200
Comment:	Positive Control: Kidney: Cells of proximal tubuli should show a moderate to strong ACE2 immunostaining with accentuation of the staining at the apical membrane. Negative Control: Kidney: Cells of distal tubuli and glomeruli should not show ACE2 immunostaining.
Protocol:	Manual Protocol: Freshly cut sections should be used (less than 10 days between cutting and staining). Heat-induced antigen retrieval for 5 minutes in an autoclave at 121 °C in pH 7,8 Target Retrieval Solution buffer. Apply the antibody at a dilution of 1:150 at 37 °C for 60 minutes. Visualization of bound antibody by the EnVision Kit (Dako, Agilent) according to the manufacturer's directions.
Restrictions:	For Research Use only

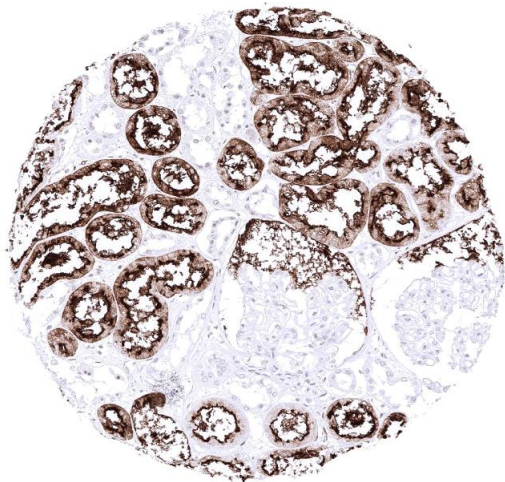
Handling

Format:	Liquid
Storage:	4 °C,-20 °C,-80 °C
Storage Comment:	Antibody with azide - store at 2 to 8 °C. Antibody without azide - store at -20 to -80 °C. Antibody is stable for 24 months. Non- hazardous.



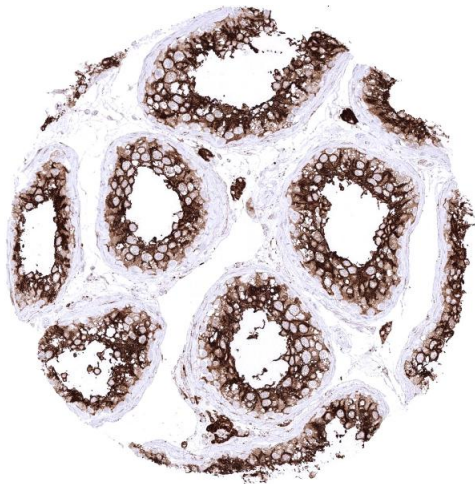
Immunohistochemistry

Image 1. Kidney Clear cell renal cell carcinoma strong strong membraous ACE2 positivity



Immunohistochemistry

Image 2. Kidney cortex A strong ACE2 immunostaining occurs in proximal tubuli of the kidney



Immunohistochemistry

Image 3. Testis Leydig cells and spermatocytes of the testis show a particularly strong ACE2 immunostaining in the testis