

Datasheet for ABIN7477379

Recombinant anti-Cadherin-16 antibody**3** Images[Go to Product page](#)

Overview

Quantity:	1 mL
Target:	Cadherin-16 (CDH16)
Reactivity:	Human
Host:	Rabbit
Antibody Type:	Recombinant Antibody
Clonality:	Monoclonal
Conjugate:	This Cadherin-16 antibody is un-conjugated
Application:	Immunohistochemistry (IHC)

Product Details

Immunogen:	Recombinant human full-length CDH16 protein
Clone:	MSVA-516R
Isotype:	IgG

Target Details

Target:	Cadherin-16 (CDH16)
Alternative Name:	Cadherin 16 / CDH16 (CDH16 Products)
Background:	Cadherin-16 (CDH16), Kidney-specific cadherin, Ksp-cadherin antibody, Cadherin 16 / CDH16 antibody validated for immunohistochemistry on 76 different Normal Tissues
UniProt:	O75309

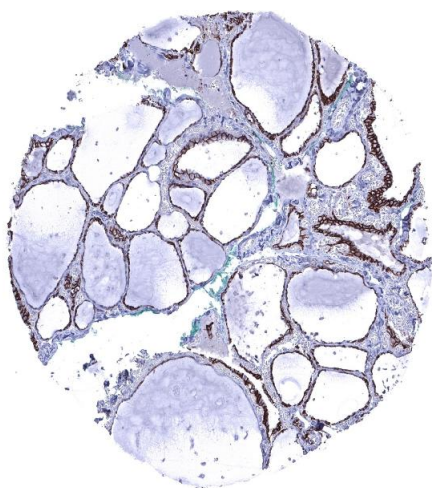
Application Details

Application Notes:	IHC 1:100-1:200
Comment:	<p>Positive Control: Kidney: A strong staining should be seen in distal tubuli and collecting ducts while the staining is at least moderate in proximal tubuli.</p> <p>Negative Control: Colon: All cells should be CDH16 negative.</p>
Protocol:	<p>Manual Protocol: Freshly cut sections should be used (less than 10 days between cutting and staining). Heat-induced antigen retrieval for 5 minutes in an autoclave at 121 °C in pH 7,8 Target Retrieval Solution buffer. Apply the antibody at a dilution of 1:150 at 37 °C for 60 minutes. Visualization of bound antibody by the EnVision Kit (Dako, Agilent) according to the manufacturer's directions.</p>
Restrictions:	For Research Use only

Handling

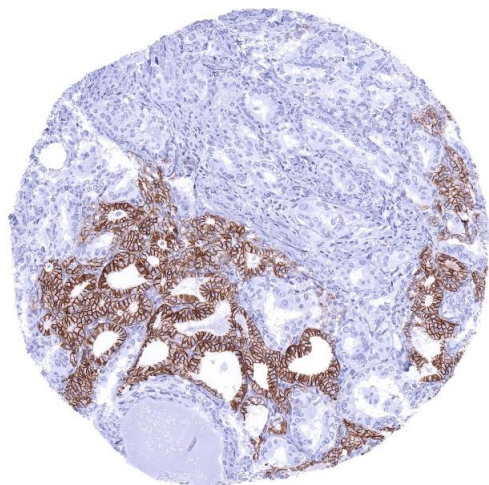
Format:	Liquid
Storage:	4 °C,-20 °C,-80 °C
Storage Comment:	Antibody with azide - store at 2 to 8 °C. Antibody without azide - store at -20 to -80 °C. Antibody is stable for 24 months. Non- hazardous.

Images



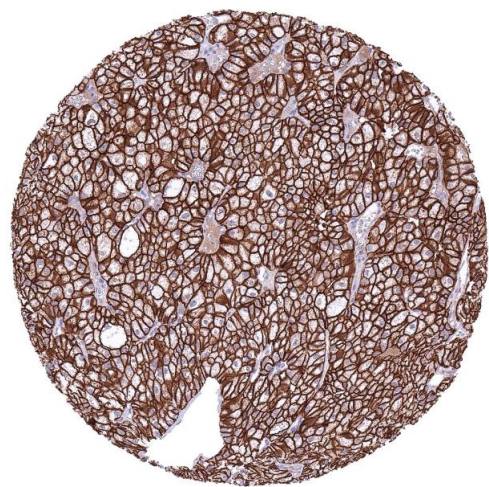
Immunohistochemistry

Image 1. Thyroid gland Strong membranous CDH16 staining of follicle cells CDH16 immunohistochemistry



Immunohistochemistry

Image 2. Thyroid CDH16 negative papillary carcinoma invading CDH16 positive normal thyroid CDH16 immunohistochemistry



Immunohistochemistry

Image 3. Kidney Chromophobe renal cell carcinoma with strong CDH16 immunostaining of tumor cells CDH16 immunohistochemistry