



[Go to Product page](#)

Datasheet for ABIN7477381

## anti-LI Cadherin antibody (AA 242-418)

### 6 Images

#### Overview

Quantity:	1 mL
Target:	LI Cadherin
Binding Specificity:	AA 242-418
Reactivity:	Human
Host:	Mouse
Clonality:	Monoclonal
Conjugate:	This LI Cadherin antibody is un-conjugated
Application:	Immunohistochemistry (IHC)

#### Product Details

Immunogen:	Recombinant fragment (around aa 242-418) of human Cadherin 17 protein (CDH17) (exact sequence is proprietary)
Clone:	MSVA-517M
Isotype:	IgG2b kappa

#### Target Details

Target:	LI Cadherin
Alternative Name:	Cadherin 17 / CDH17 ( <a href="#">LI Cadherin Products</a> )
Background:	BILL-cadherin, Cadherin-17, CDH17, HPT-1 cadherin, human intestinal peptide-associated transporter HPT-1, human peptide transporter 1 (HPT-1), Intestinal peptide-associated transporter HPT-1, LI-cadherin (liver-intestine), Liver Cadherin, Liver-intestine cadherin, Cadherin

## Target Details

17 / CDH17 antibody validated for immunohistochemistry on 76 different Normal Tissues

UniProt: [Q12864](#)

## Application Details

Application Notes: IHC 1:100-1:200

Comment: Positive Control: Colon: A strong CDH17 staining should be seen in all epithelial cells.  
Negative Control: Colon: Non-epithelial cells should not show any CDH17 immunostaining.

Protocol: Manual Protocol: Freshly cut sections should be used (less than 10 days between cutting and staining). Heat-induced antigen retrieval for 5 minutes in an autoclave at 121 °C in pH 7,8 Target Retrieval Solution buffer. Apply the antibody at a dilution of 1:150 at 37 °C for 60 minutes. Visualization of bound antibody by the EnVision Kit (Dako, Agilent) according to the manufacturer's directions.

Restrictions: For Research Use only

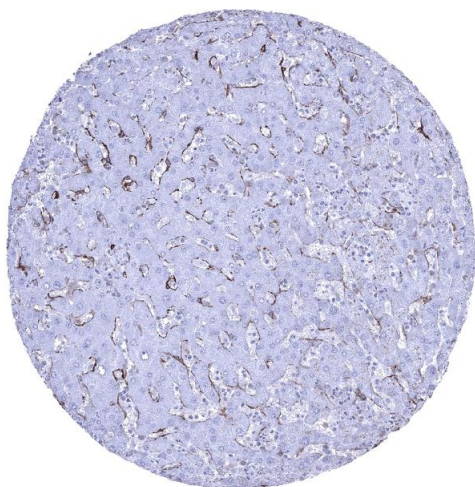
## Handling

Format: Liquid

Storage: 4 °C,-20 °C,-80 °C

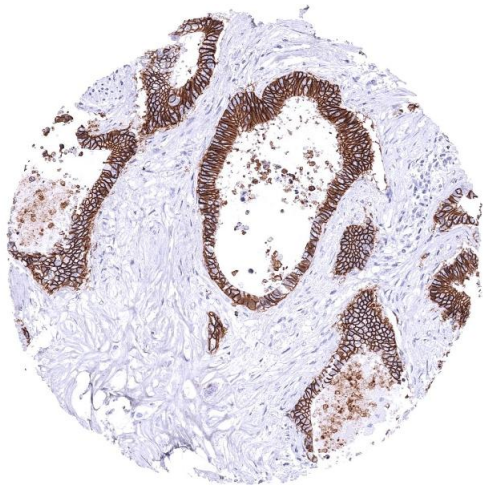
Storage Comment: Antibody with azide - store at 2 to 8 °C. Antibody without azide - store at -20 to -80 °C. Antibody is stable for 24 months. Non- hazardous.

## Images



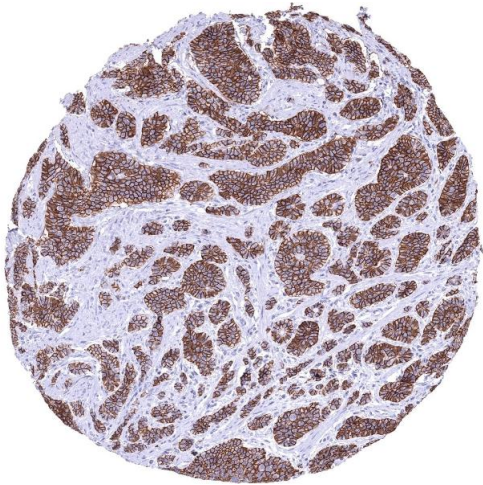
### Immunohistochemistry

**Image 1.** Liver Moderate CD141 staining of sinusoidal cells  
CD141 immunohistochemistry.



#### Immunohistochemistry

**Image 2.** Colon Colorectal adenocarcinoma with strong CDH17 immunostaining of all tumor cells CDH17 immunohistochemistry



#### Immunohistochemistry

**Image 3.** Ileum Neuroendocrine tumor with strong CDH17 immunostaining of all tumor cells CDH17 immunohistochemistry

Please check the [product details page](#) for more images. Overall 6 images are available for ABIN7477381.