



[Go to Product page](#)

Datasheet for ABIN7477385

Recombinant anti-Caldesmon antibody

3 Images

Overview

Quantity:	1 mL
Target:	Caldesmon (CALD1)
Reactivity:	Human
Host:	Rabbit
Antibody Type:	Recombinant Antibody
Clonality:	Monoclonal
Conjugate:	This Caldesmon antibody is un-conjugated
Application:	Immunohistochemistry (IHC)

Product Details

Immunogen:	Recombinant human full-length CALD1 protein
Clone:	MSVA-538R
Isotype:	IgG

Target Details

Target:	Caldesmon (CALD1)
Alternative Name:	Caldesmon (CALD1 Products)
Background:	CAD, CALD1, Caldesmon 1 Isoform 1, Caldesmon 1 Isoform 2, Caldesmon 1 Isoform 3, Caldesmon 1 Isoform 4, Caldesmon 1 Isoform 5, CDM, HCAD, LCAD, NAG22, Caldesmon antibody validated for immunohistochemistry on 76 different Normal Tissues

Target Details

UniProt: [Q05682](#)

Pathways: [Myometrial Relaxation and Contraction](#)

Application Details

Application Notes: IHC 1:100-1:200

Comment: Positive Control: Colon: A strong caldesmon staining should be seen of the muscularis mucosa and of a membrane-like layer along the basement membranes of crypts (intestinal subepithelial myofibroblasts).

Negative Control: Colon: Normal epithelial cells must not show caldesmon staining.

Protocol: Manual Protocol: Freshly cut sections should be used (less than 10 days between cutting and staining). Heat-induced antigen retrieval for 5 minutes in an autoclave at 121 °C in pH 7,8 Target Retrieval Solution buffer. Apply the antibody at a dilution of 1:150 at 37 °C for 60 minutes. Visualization of bound antibody by the EnVision Kit (Dako, Agilent) according to the manufacturer's directions.

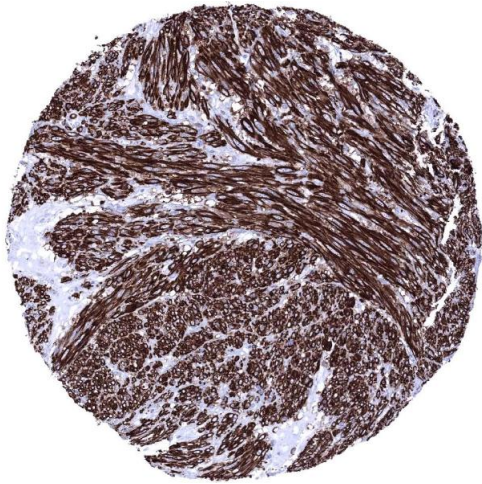
Restrictions: For Research Use only

Handling

Format: Liquid

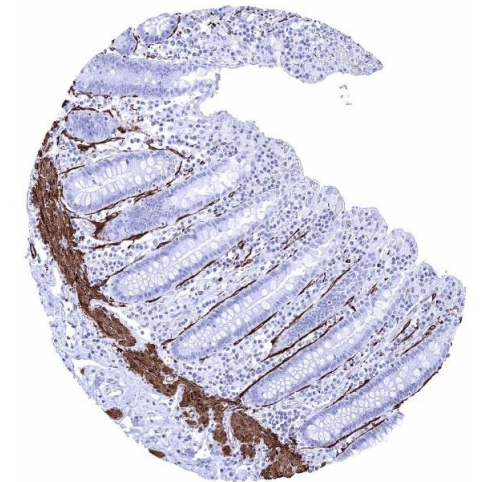
Storage: 4 °C,-20 °C,-80 °C

Storage Comment: Antibody with azide - store at 2 to 8 °C. Antibody without azide - store at -20 to -80 °C. Antibody is stable for 24 months. Non- hazardous.



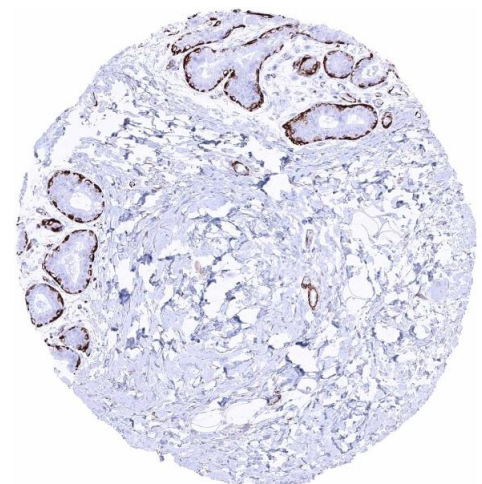
Immunohistochemistry

Image 1. Uterus Leiomyosarcoma showing intense Caldesmon immunostaining of tumor cells Caldesmon immunohistochemistry



Immunohistochemistry

Image 2. Appendix mucosa Intense caldesmon h positivity of intestinal subepithelial myofibroblasts (ISEMFs) and of the muscularis mucosae Caldesmon h immunohistochemistry



Immunohistochemistry

Image 3. Breast Caldesmon h staining of myoepithelial cells Caldesmon h immunohistochemistry