



[Go to Product page](#)

Datasheet for ABIN7477389

## Recombinant anti-CD1a antibody

### 3 Images

#### Overview

Quantity:	1 mL
Target:	CD1a
Reactivity:	Human
Host:	Mouse
Antibody Type:	Recombinant Antibody
Clonality:	Monoclonal
Conjugate:	This CD1a antibody is un-conjugated
Application:	Immunohistochemistry (IHC)

#### Product Details

Immunogen:	Recombinant full-length human CD1a protein
Clone:	MSVA-001M
Isotype:	IgG

#### Target Details

Target:	CD1a
Alternative Name:	CD1a ( <a href="#">CD1a Products</a> )
Background:	Cortical thymocyte antigen CD1A, Epidermal dendritic cell marker CD1a antibody, FCB6, HTA1, T cell surface antigen T6 / Leu 6, T-Cell Surface Glycoprotein CD1A, CD1a antibody validated for immunohistochemistry on 76 different Normal Tissues

## Target Details

UniProt: [P06126](#)

Pathways: [Regulation of Leukocyte Mediated Immunity, Positive Regulation of Immune Effector Process](#)

## Application Details

Application Notes: IHC 1:100-1:200

Comment: Positive Control: Skin: A strong CD1a staining should be seen in Langerhans cells.  
Negative Control: Skin: CD1a staining must be absent in squamous epithelial cells and sebaceous glands cells.

Protocol: Manual Protocol: Freshly cut sections should be used (less than 10 days between cutting and staining). Heat-induced antigen retrieval for 5 minutes in an autoclave at 121 °C in pH 7,8 Target Retrieval Solution buffer. Apply the antibody at a dilution of 1:150 at 37 °C for 60 minutes. Visualization of bound antibody by the EnVision Kit (Dako, Agilent) according to the manufacturer's directions.

Restrictions: For Research Use only

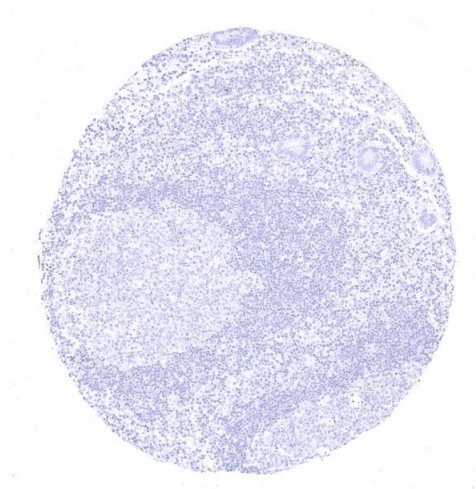
## Handling

Format: Liquid

Storage: 4 °C, -20 °C, -80 °C

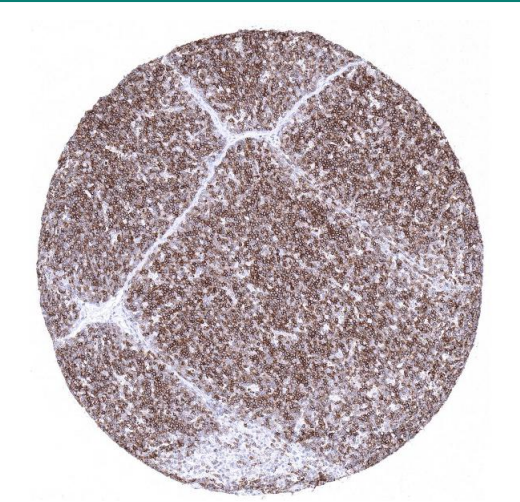
Storage Comment: Antibody with azide - store at 2 to 8 °C. Antibody without azide - store at -20 to -80 °C. Antibody is stable for 24 months. Non- hazardous.

## Images



### Immunohistochemistry

**Image 1.** Lymphatic and epithelial cells of the appendix completely lack CD1a immunostaining



#### Immunohistochemistry

**Image 2.** A strong CD1a immunostaining is seen in 80 of small lymphocytes in the thymic cortex



#### Immunohistochemistry

**Image 3.** Strong CD1 immunostaining of Langerhans cells in squamous epithelium of the skin