



[Go to Product page](#)

Datasheet for ABIN7477395

## Recombinant anti-CD5 antibody (AA 32-372)

### 3 Images

#### Overview

Quantity:	1 mL
Target:	CD5
Binding Specificity:	AA 32-372
Reactivity:	Human
Host:	Rabbit
Antibody Type:	Recombinant Antibody
Clonality:	Monoclonal
Conjugate:	This CD5 antibody is un-conjugated
Application:	Immunohistochemistry (IHC)

#### Product Details

Immunogen:	Recombinant fragment (around aa32-372) corresponding to human CD5 protein (extracellular).
Clone:	MSVA-005R
Isotype:	IgG

#### Target Details

Target:	CD5
Alternative Name:	CD5 ( <a href="#">CD5 Products</a> )
Background:	CD5 antigen (p56 62), LEU1, Ly12, LyA, Lymphocyte antigen T1/Leu-1, Lymphocyte glycoprotein T1/Leu1, T-cell surface glycoprotein CD5, CD5 antibody validated for immunohistochemistry on

## Target Details

---

76 different Normal Tissues

UniProt: [P06127](#)

## Application Details

---

Application Notes: IHC 1:100-1:200

Comment: Positive Control: Tonsil: A strong CD5 staining of virtually all T-cells in both T-zones and in germinal centres as well as an at least weak to moderate staining of dispersed B-cells in the mantle zone should be seen.

Negative Control: Tonsil: CD5 staining should be absent in germinal centre B-cells and in surface epithelial cells (A fraction of crypt epithelial cells may stain positive).

Protocol: Manual Protocol: Freshly cut sections should be used (less than 10 days between cutting and staining). Heat-induced antigen retrieval for 5 minutes in an autoclave at 121 °C in pH 7,8 Target Retrieval Solution buffer. Apply the antibody at a dilution of 1:150 at 37 °C for 60 minutes. Visualization of bound antibody by the EnVision Kit (Dako, Agilent) according to the manufacturer's directions.

Restrictions: For Research Use only

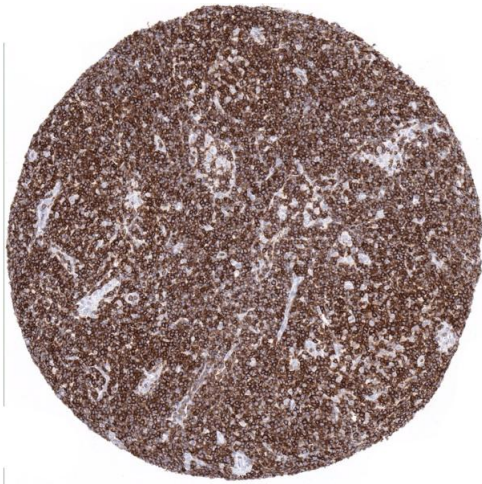
## Handling

---

Format: Liquid

Storage: 4 °C,-20 °C,-80 °C

Storage Comment: Antibody with azide - store at 2 to 8 °C. Antibody without azide - store at -20 to -80 °C. Antibody is stable for 24 months. Non- hazardous.



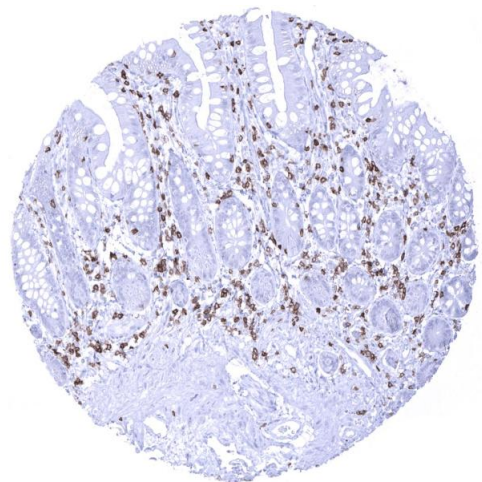
#### Immunohistochemistry

**Image 1.** Lymph node B CLL with strong CD5 positivity of all tumor cells.



#### Immunohistochemistry

**Image 2.** Tonsil Strong CD5 positivity of T lymphocytes interfollicular and in germinal centres



#### Immunohistochemistry

**Image 3.** Strong CD5 immunostaining of T lymphocytes in the ileum mucosa