



[Go to Product page](#)

Datasheet for ABIN7477405  
**anti-FCER2 antibody (AA 48-321)**

3 Images

Overview

Quantity:	1 mL
Target:	FCER2
Binding Specificity:	AA 48-321
Reactivity:	Human
Host:	Mouse
Clonality:	Monoclonal
Conjugate:	This FCER2 antibody is un-conjugated
Application:	Immunohistochemistry (IHC)

Product Details

Immunogen:	Recombinant fragment (around aa 48-321) of human FCER2/CD23 protein (exact sequence is proprietary)
Clone:	MSVA-023M
Isotype:	IgG

Target Details

Target:	FCER2
Alternative Name:	CD23 ( <a href="#">FCER2 Products</a> )
Background:	BLAST-2, C-type lectin domain family 4, member J, Fc fragment of IgE low affinity II receptor, Fc-epsilon-R1I, FCER2, FCER2A, FcεR1I, IgE-binding factor (IGEBF), Immunoglobulin E receptor, low affinity II, Lymphocyte IgE receptor, CD23 antibody validated for immunohistochemistry on

## Target Details

---

76 different Normal Tissues

UniProt: [P06734](#)

Pathways: [Regulation of Leukocyte Mediated Immunity](#), [Positive Regulation of Immune Effector Process](#)

## Application Details

---

Application Notes: IHC 1:100-1:200

Comment: Positive Control: Tonsil: The follicular dendritic cells of the germinal centres should show a strong CD23 immunostaining while the majority of lymphocytes in the mantle zone of the follicles should show an at least weak staining.  
Negative Control: Tonsil: The squamous epithelial cells and T-cells in the interfollicular T-zones should not show any CD23 immunostaining.

Protocol: Manual Protocol: Freshly cut sections should be used (less than 10 days between cutting and staining). Heat-induced antigen retrieval for 5 minutes in an autoclave at 121 °C in pH 7,8 Target Retrieval Solution buffer. Apply the antibody at a dilution of 1:150 at 37 °C for 60 minutes. Visualization of bound antibody by the EnVision Kit (Dako, Agilent) according to the manufacturer's directions.

Restrictions: For Research Use only

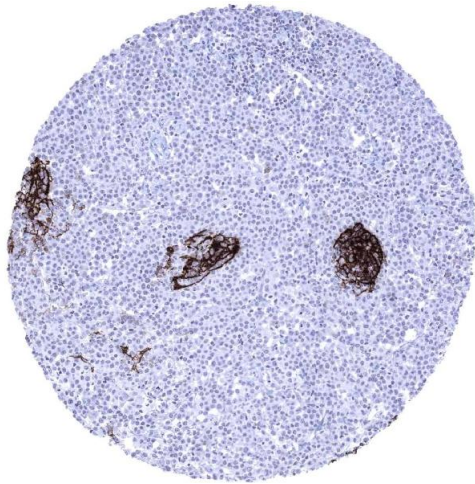
## Handling

---

Format: Liquid

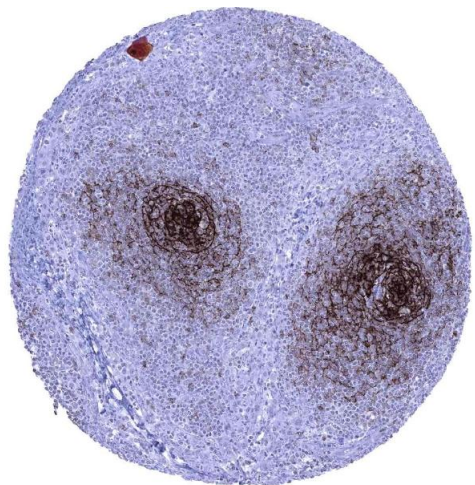
Storage: 4 °C,-20 °C,-80 °C

Storage Comment: Antibody with azide - store at 2 to 8 °C. Antibody without azide - store at -20 to -80 °C. Antibody is stable for 24 months. Non- hazardous.



#### Immunohistochemistry

**Image 1.** CD23 negative mantle cell lymphoma containing few germinal centre remnants that include CD23 positive dendritic cells



#### Immunohistochemistry

**Image 2.** Lymph node In lymph nodes a strong CD23 immunostaining is seen in follicular dendritic cells of germinal centres while staining is moderate in follicular and perifollicular B lymphocytes



#### Immunohistochemistry

**Image 3.** B cell chronic lymphatic leukemia B CLL composed of strongly CD23 positive tumor cells