

Datasheet for ABIN7477421

## Recombinant anti-Elastase 3B antibody (AA 82-238)



[Go to Product page](#)

### 3 Images

#### Overview

Quantity:	1 mL
Target:	Elastase 3B (ELA3B)
Binding Specificity:	AA 82-238
Reactivity:	Human
Host:	Mouse
Antibody Type:	Recombinant Antibody
Clonality:	Monoclonal
Conjugate:	This Elastase 3B antibody is un-conjugated
Application:	Immunohistochemistry (IHC)

#### Product Details

Immunogen:	Recombinant human CELA3B protein fragment (around aa 82-238) (exact sequence is proprietary)
Clone:	MSVA-410M
Isotype:	IgG

#### Target Details

Target:	Elastase 3B (ELA3B)
Alternative Name:	CELA3B ( <a href="#">ELA3B Products</a> )
Background:	Chymotrypsin like elastase family member 3B (CELA3B), ELA3B, Elastase IIIB, Protease

## Target Details

E,CELA3B antibody validated for immunohistochemistry on 76 different Normal Tissues

UniProt: [P08861](#)

## Application Details

Application Notes: IHC 1:100-1:200

Comment: Positive Control: Pancreas: Acinar cells should show a strong CELA3B immunostaining with apical predominance.

Negative Control: Kidney: CELA3B staining should be absent in all epithelial cells.

Protocol: Manual Protocol: Freshly cut sections should be used (less than 10 days between cutting and staining). Heat-induced antigen retrieval for 5 minutes in an autoclave at 121 °C in pH 7,8 Target Retrieval Solution buffer. Apply the antibody at a dilution of 1:150 at 37 °C for 60 minutes. Visualization of bound antibody by the EnVision Kit (Dako, Agilent) according to the manufacturer's directions.

Restrictions: For Research Use only

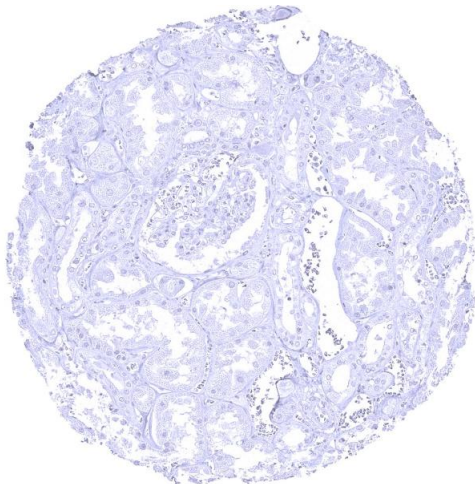
## Handling

Format: Liquid

Storage: 4 °C, -20 °C, -80 °C

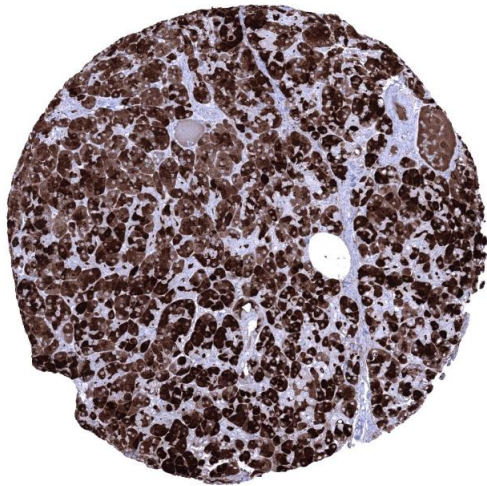
Storage Comment: Antibody with azide - store at 2 to 8 °C. Antibody without azide - store at -20 to -80 °C. Antibody is stable for 24 months. Non- hazardous.

## Images



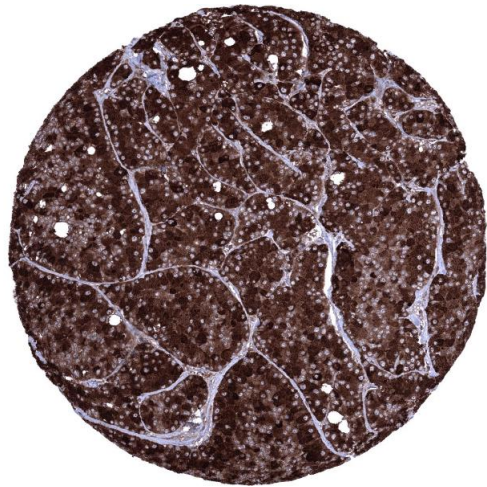
### Immunohistochemistry

**Image 1.** CELA3B immunostaining is absent in kidney tissue



#### Immunohistochemistry

**Image 2.** Normal pancreas with strong CELA3B positivity of acinar cells



#### Immunohistochemistry

**Image 3.** Acinar cell carcinoma of the pancreas exhibiting a strong CELA3B immunostaining of all tumor cells