

Datasheet for ABIN7477435

Recombinant anti-Keratin 6 antibody

3 Images



[Go to Product page](#)

Overview

Quantity:	1 mL
Target:	Keratin 6 (KRT6)
Reactivity:	Human
Host:	Rabbit
Antibody Type:	Recombinant Antibody
Clonality:	Monoclonal
Conjugate:	This Keratin 6 antibody is un-conjugated
Application:	Immunohistochemistry (IHC)

Product Details

Immunogen:	Recombinant fragment of human KRT6 (exact sequence is proprietary)
Clone:	MSVA-606R
Isotype:	IgG

Target Details

Target:	Keratin 6 (KRT6)
Alternative Name:	Cytokeratin 6 (KRT6 Products)
Background:	CK6A, CK6B, CK6C, CK6D, CK6E, Keratin Type II Cytoskeletal 6A, Keratin Type II Cytoskeletal 6B, Keratin Type II Cytoskeletal 6C, Keratin Type II Cytoskeletal 6D, Keratin Type II Cytoskeletal 6E, KRT6, KRT6A, KRT6B, KRT6C, KRT6D, KRT6E, Cytokeratin 6 antibody validated for immunohistochemistry on 76 different Normal Tissues

Target Details

UniProt: [P02538](#), [P04259](#), [P48668](#)

Application Details

Application Notes: IHC 1:100-1:200

Comment: Positive Control: Tonsil: A strong CK6 staining should be seen in all epithelial cells of the surface epithelium except the basal cell layer where staining should be absent or weak.
Negative Control: Tonsil: CK6 staining should be absent in lymphocytes and all other mesenchymal cells.

Protocol: Manual Protocol: Freshly cut sections should be used (less than 10 days between cutting and staining). Heat-induced antigen retrieval for 5 minutes in an autoclave at 121 °C in pH 7,8 Target Retrieval Solution buffer. Apply the antibody at a dilution of 1:150 at 37 °C for 60 minutes. Visualization of bound antibody by the EnVision Kit (Dako, Agilent) according to the manufacturer's directions.

Restrictions: For Research Use only

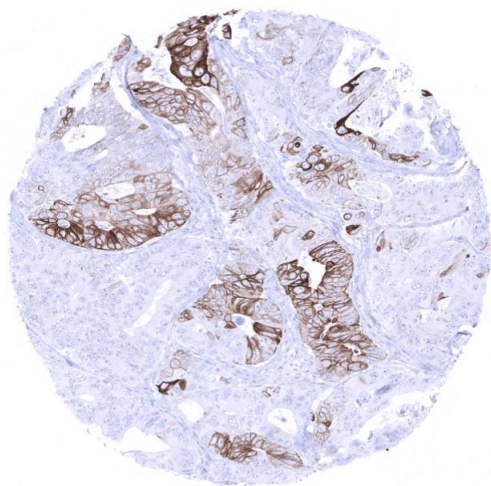
Handling

Format: Liquid

Storage: 4 °C, -20 °C, -80 °C

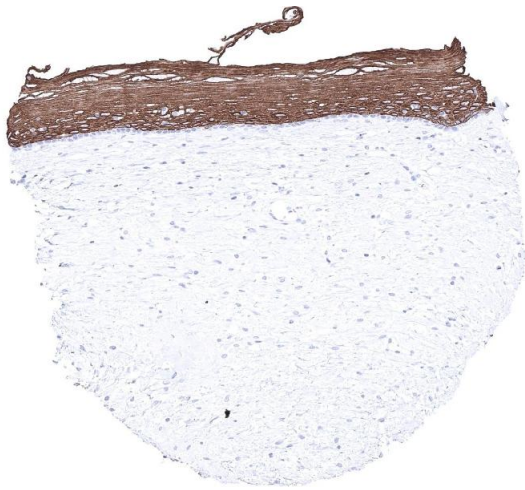
Storage Comment: Antibody with azide - store at 2 to 8 °C. Antibody without azide - store at -20 to -80 °C. Antibody is stable for 24 months. Non- hazardous.

Images



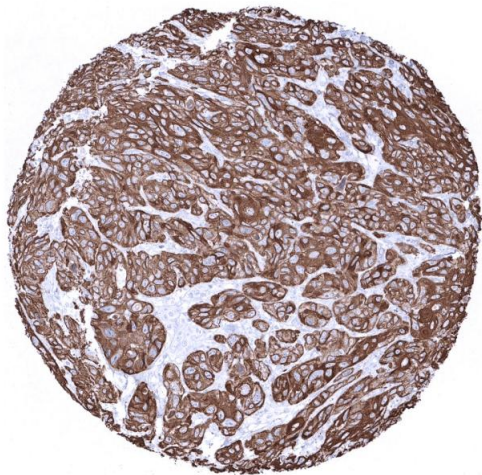
Immunohistochemistry

Image 1. Colorectal adenocarcinoma with strong KRT6 positivity in about 50 of tumor cells



Immunohistochemistry

Image 2. Uterus ectocervix



Immunohistochemistry

Image 3. Squamous cell carcinoma of the uterine cervix with strong Cytokeratin 6 positivity