

Datasheet for ABIN7477437

Recombinant anti-Cytokeratin 7 antibody (AA 1-100)[Go to Product page](#)**3** Images

Overview

Quantity:	1 mL
Target:	Cytokeratin 7 (KRT7)
Binding Specificity:	AA 1-100
Reactivity:	Human
Host:	Rabbit
Antibody Type:	Recombinant Antibody
Clonality:	Monoclonal
Conjugate:	This Cytokeratin 7 antibody is un-conjugated
Application:	Immunohistochemistry (IHC)

Product Details

Immunogen:	Recombinant fragment (around aa1-100) of human KRT7 protein (exact sequence is proprietary)
Clone:	MSVA-607R
Isotype:	IgG

Target Details

Target:	Cytokeratin 7 (KRT7)
Alternative Name:	Cytokeratin 7 (KRT7 Products)
Background:	CK-7, K2C7, Keratin 55K Type II Cytoskeletal, Keratin Simple Epithelial Type 1 K7, Keratin Type II

Target Details

Cytoskeletal 7, Krt2-7, KRT7, Sarcolectin, SCL, Type II Mesothelial Keratin K7, Type-II Keratin Kb7, Cytokeratin 7 antibody validated for immunohistochemistry on 76 different Normal Tissues

UniProt: [P08729](#)

Application Details

Application Notes: IHC 1:100-1:200

Comment: Positive Control: Pancreas: CK7 staining is at least weak to moderate cytoplasmic intercalating ducts and strong in large pancreatic ducts.

Negative Control: Pancreas: CK7 staining should be absent in all acinar cells.

Protocol: Manual Protocol: Freshly cut sections should be used (less than 10 days between cutting and staining). Heat-induced antigen retrieval for 5 minutes in an autoclave at 121 °C in pH 7,8 Target Retrieval Solution buffer. Apply the antibody at a dilution of 1:150 at 37 °C for 60 minutes. Visualization of bound antibody by the EnVision Kit (Dako, Agilent) according to the manufacturer's directions.

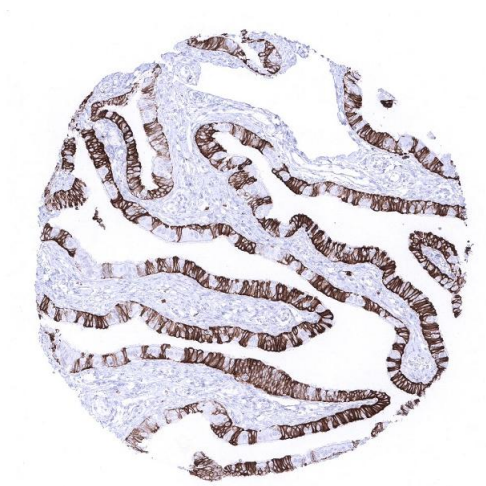
Restrictions: For Research Use only

Handling

Format: Liquid

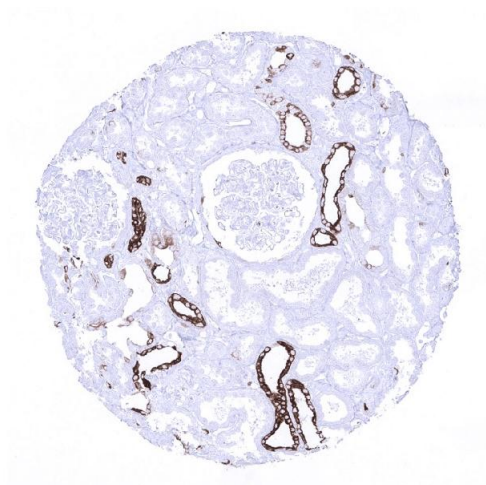
Storage: 4 °C, -20 °C, -80 °C

Storage Comment: Antibody with azide - store at 2 to 8 °C. Antibody without azide - store at -20 to -80 °C. Antibody is stable for 24 months. Non- hazardous.



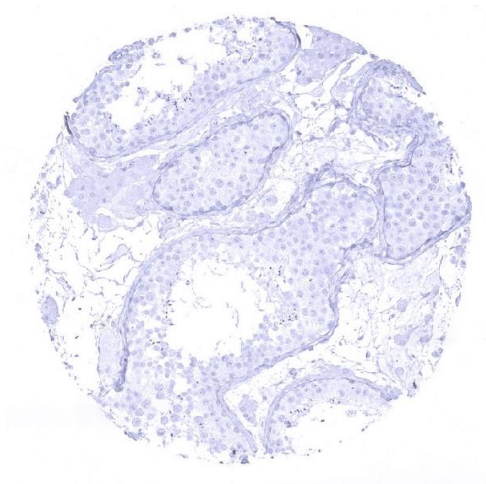
Immunohistochemistry

Image 1. fallopian tube mucosa



Immunohistochemistry

Image 2. kidney cortex



Immunohistochemistry

Image 3. testis