

Datasheet for ABIN7477445

anti-KRT15 antibody

3 Images

[Go to Product page](#)

Overview

Quantity:	1 mL
Target:	KRT15
Reactivity:	Human
Host:	Mouse
Clonality:	Monoclonal
Conjugate:	This KRT15 antibody is un-conjugated
Application:	Immunohistochemistry (IHC)

Product Details

Immunogen:	Recombinant full-length human KRT15 protein
Clone:	MSVA-615M
Isotype:	IgG

Target Details

Target:	KRT15
Alternative Name:	Cytokeratin 15 (KRT15 Products)
Background:	CK15, Cytokeratin 15, K1CO, Ka15, Keratin 15 basic, Keratin 15 beta, Keratin complex 1 acidic gene 15, Keratin type I cytoskeletal 15, KRT15, KRTB, KRTL15, Type I cytoskeletal 15, Type I keratin Ka15, Cytokeratin 15 antibody validated for immunohistochemistry on 76 different Normal Tissues
UniProt:	P19012

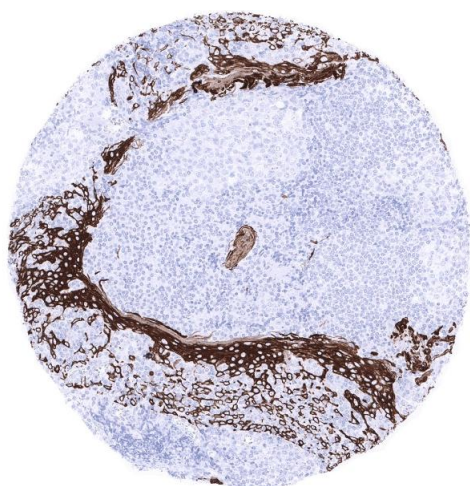
Application Details

Application Notes:	IHC 1:50-1:100
Comment:	<p>Positive Control: Tonsil: All cells of the surface squamous epithelium and most squamous cells of the crypts should show strong KRT15 staining.</p> <p>Negative Control: Tonsil: All lymphocytes and blood vessels must not show any KRT15 staining.</p>
Protocol:	<p>Manual Protocol: Freshly cut sections should be used (less than 10 days between cutting and staining). Heat-induced antigen retrieval for 5 minutes in an autoclave at 121 °C in pH 7,8 Target Retrieval Solution buffer. Apply the antibody at a dilution of 1:50 at 37 °C for 60 minutes. Visualization of bound antibody by the EnVision Kit (Dako, Agilent) according to the manufacturer's directions.</p>
Restrictions:	For Research Use only

Handling

Format:	Liquid
Storage:	4 °C,-20 °C,-80 °C
Storage Comment:	Antibody with azide - store at 2 to 8 °C. Antibody without azide - store at -20 to -80 °C. Antibody is stable for 24 months. Non- hazardous.

Images



Immunohistochemistry

Image 1. Tonsil In tonsil krypts a strong KRT15 immunostaining is found in all cell layers of squamous epithelium



Immunohistochemistry

Image 2. Esophagus squamous epithelium A strong KRT15 immunostaining is always found in all cell layers of all non keratinizing and keratinizing squamous epithelium



Immunohistochemistry

Image 3. Tonsil surface Epithelium A strong KRT15 immunostaining is found in all cell layers of all non keratinizing and keratinizing squamous epithelium except keratin layer