

Datasheet for ABIN7477457

Recombinant anti-Desmin antibody

3 Images



[Go to Product page](#)

Overview

Quantity:	1 mL
Target:	Desmin (DES)
Reactivity:	Human
Host:	Mouse
Antibody Type:	Recombinant Antibody
Clonality:	Monoclonal
Conjugate:	This Desmin antibody is un-conjugated
Application:	Immunohistochemistry (IHC)

Product Details

Immunogen:	Recombinant full-length human desmin protein
Clone:	MSVA-651M
Isotype:	IgG

Target Details

Target:	Desmin (DES)
Alternative Name:	Desmin (DES Products)
Background:	CMD11, CSM1, CSM2, DES, Intermediate filament protein, Desmin antibody validated for immunohistochemistry on 76 different Normal Tissues
UniProt:	P17661

Application Details

Application Notes: IHC 1:100-1:200

Comment: Positive Control: Appendix: Smooth muscle cells in the lamina muscularis mucosae and muscularis propria must show a strong cytoplasmic staining while staining should be at least moderate in most smooth muscle cells of blood vessels and in dispersed myofibroblasts.
Negative Control: Appendix: Desmin staining should not be seen in lymphocytes and epithelial cells.

Protocol: Manual Protocol: Freshly cut sections should be used (less than 10 days between cutting and staining). Heat-induced antigen retrieval for 5 minutes in an autoclave at 121 °C in pH 7,8 Target Retrieval Solution buffer. Apply the antibody at a dilution of 1:150 at 37 °C for 60 minutes. Visualization of bound antibody by the EnVision Kit (Dako, Agilent) according to the manufacturer's directions.

Restrictions: For Research Use only

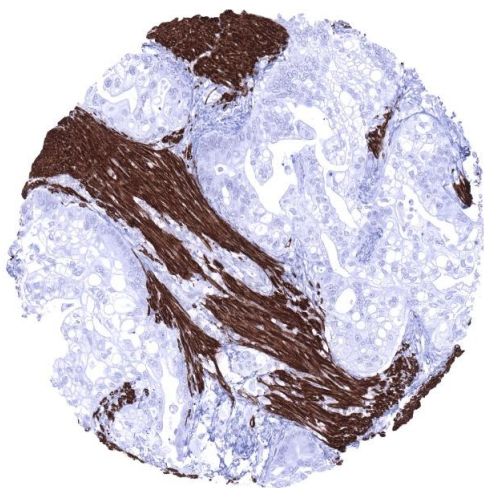
Handling

Format: Liquid

Storage: 4 °C,-20 °C,-80 °C

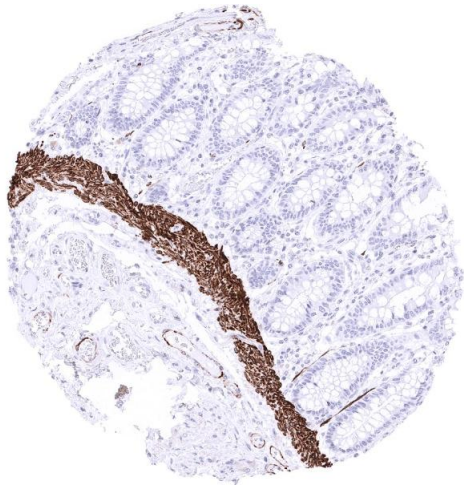
Storage Comment: Antibody with azide - store at 2 to 8 °C. Antibody without azide - store at -20 to -80 °C. Antibody is stable for 24 months. Non- hazardous.

Images



Immunohistochemistry

Image 1. Stomach Gastric adenocarcinoma invading desmin positive smooth muscle fibres



Immunohistochemistry

Image 2. Rectum Strong desmin staining of lamina muscularis mucosae



Immunohistochemistry

Image 3. Soft tissue Strong desmin positivity of all tumor cells of a rhabdomyosarcoma