

Datasheet for ABIN7477473  
**anti-FABP1 antibody (AA 1-127)**[Go to Product page](#)

## 3 Images

## Overview

Quantity:	1 mL
Target:	FABP1
Binding Specificity:	AA 1-127
Reactivity:	Human
Host:	Mouse
Clonality:	Monoclonal
Conjugate:	This FABP1 antibody is un-conjugated
Application:	Immunohistochemistry (IHC)

## Product Details

Immunogen:	Human recombinant FABP1 protein fragment (around aa1-127) (exact sequence is proprietary)
Clone:	MSVA-501M
Isotype:	IgG

## Target Details

Target:	FABP1
Alternative Name:	FABP1 ( <a href="#">FABP1 Products</a> )
Background:	FABP1, L-FABP, FABP1 antibody validated for immunohistochemistry on 76 different Normal Tissues
UniProt:	<a href="#">P07148</a>

## Target Details

Pathways: [Chromatin Binding, Regulation of Lipid Metabolism by PPARalpha](#)

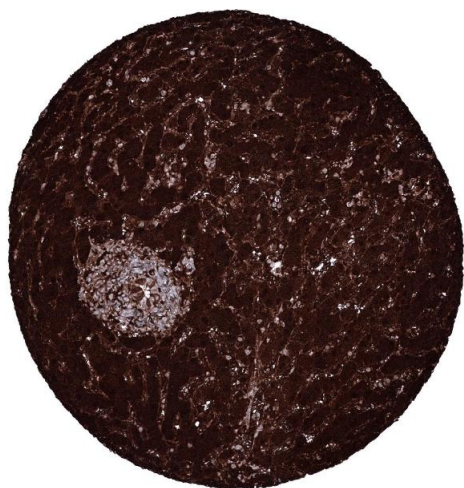
## Application Details

Application Notes:	IHC 1:100-1:200
Comment:	Positive Control: Kidney: A strong cytoplasmic FABP1 immunostaining should be seen in cells of the proximal tubule while other cell types remain negative or display only a faint staining. Negative Control: Tonsil: All epithelial and lymphocytic cells must not show any FABP1 immunostaining.
Protocol:	Manual Protocol: Freshly cut sections should be used (less than 10 days between cutting and staining). Heat-induced antigen retrieval for 5 minutes in an autoclave at 121 °C in pH 7,8 Target Retrieval Solution buffer. Apply the antibody at a dilution of 1:150 at 37 °C for 60 minutes. Visualization of bound antibody by the EnVision Kit (Dako, Agilent) according to the manufacturer's directions.
Restrictions:	For Research Use only

## Handling

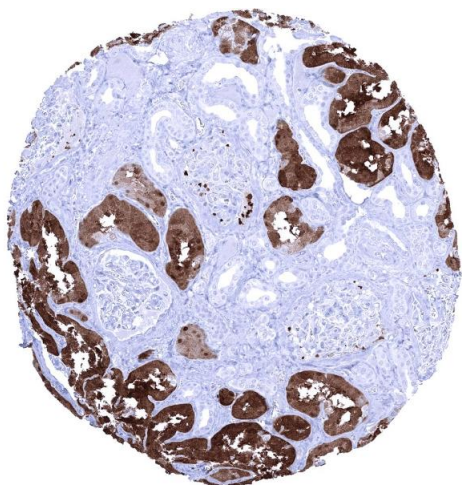
Format:	Liquid
Storage:	4 °C,-20 °C,-80 °C
Storage Comment:	Antibody with azide - store at 2 to 8 °C. Antibody without azide - store at -20 to -80 °C. Antibody is stable for 24 months. Non- hazardous.

## Images



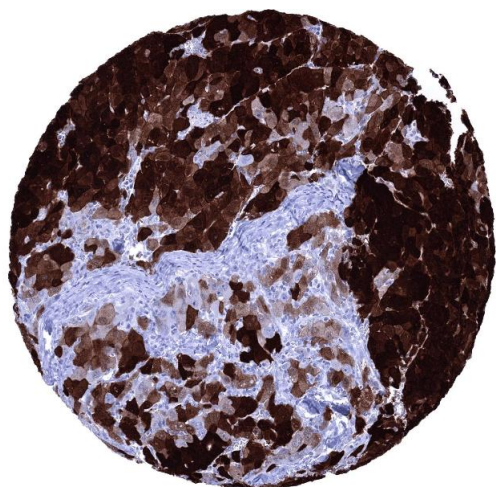
### Immunohistochemistry

**Image 1.** Liver Strong FABP1 immunostaining of hepatocytes. Due to very high levels of FABP1 protein in these epithelia staining of adjacent tissues can occur contamination artifact



#### Immunohistochemistry

**Image 2.** Kidney cortex In the kidney FABP1 immunostaining preferentially occurs in proximal tubuli



#### Immunohistochemistry

**Image 3.** Hepatocellular carcinoma with strong FABP1 immunostaining of 95 of tumor cells