

Datasheet for ABIN7477479

anti-GATA3 antibody

3 Images

[Go to Product page](#)

Overview

Quantity:	1 mL
Target:	GATA3
Reactivity:	Human
Host:	Mouse
Clonality:	Monoclonal
Conjugate:	This GATA3 antibody is un-conjugated
Application:	Immunohistochemistry (IHC)

Product Details

Immunogen:	Recombinant full-length human GATA-3 protein
Clone:	MSVA-450M
Isotype:	IgG

Target Details

Target:	GATA3
Alternative Name:	GATA3 (GATA3 Products)
Background:	GATA3, GATA binding protein-3, GATA-binding factor 3, GATA3, HDR, HDRS, Transacting T-cell-specific transcription factor GATA-3, GATA3 antibody validated for immunohistochemistry on 76 different Normal Tissues
UniProt:	P23771

Target Details

Pathways: [Hormone Transport, Regulation of Hormone Metabolic Process, Tube Formation](#)

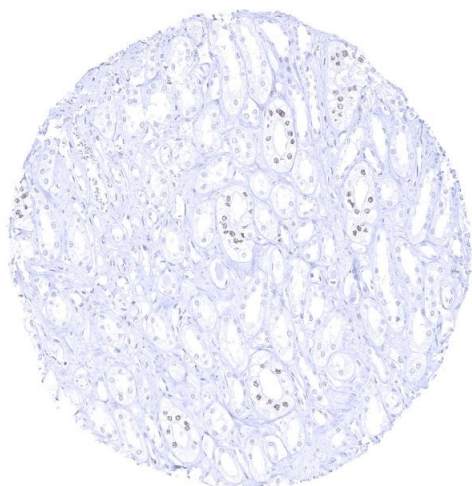
Application Details

Application Notes:	IHC 1:50-1:100
Comment:	<p>Positive Control: Kidney: A moderate to strong nuclear staining reaction should be seen in a fraction of collecting duct cells and podocytes in glomeruli. , Tonsil: The vast majority of T helper cells (Th2) in the T-zones should show a weak to moderate nuclear staining.</p> <p>Negative Control: Kidney: Staining should be absent in proximal and distal tubuli as well as in blood vessels. , Tonsil: Staining should be absent in B-cells.</p>
Protocol:	<p>Manual Protocol: Freshly cut sections should be used (less than 10 days between cutting and staining). Heat-induced antigen retrieval for 5 minutes in an autoclave at 121 °C in pH 7,8 Target Retrieval Solution buffer. Apply the antibody at a dilution of 1:80 at 37 °C for 60 minutes. Visualization of bound antibody by the EnVision Kit (Dako, Agilent) according to the manufacturer's directions.</p>
Restrictions:	For Research Use only

Handling

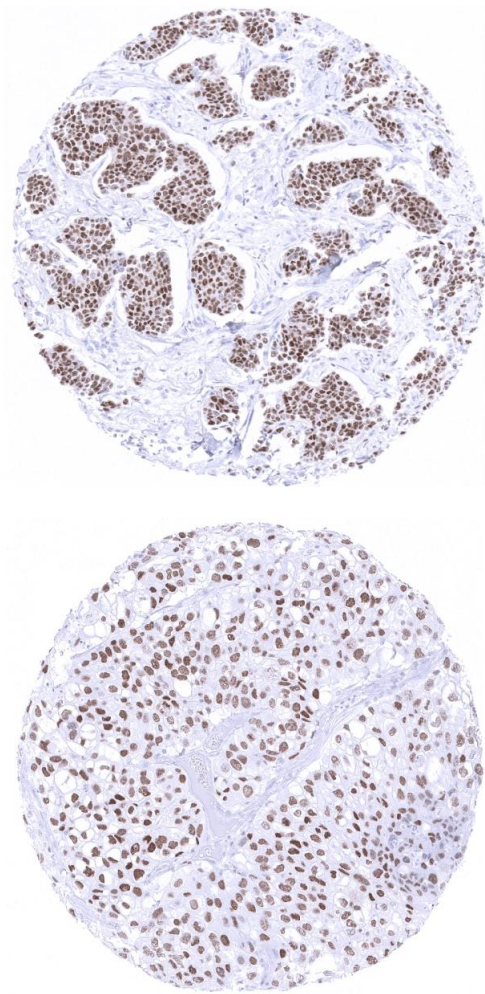
Format:	Liquid
Storage:	4 °C,-20 °C,-80 °C
Storage Comment:	Antibody with azide - store at 2 to 8 °C. Antibody without azide - store at -20 to -80 °C. Antibody is stable for 24 months. Non- hazardous.

Images



Immunohistochemistry

Image 1. Kidney medulla In the kidney a moderate to strong GATA3 positivity is seen in collecting ducts



Immunohistochemistry

Image 2. Breast Breast cancer of no special type NST showing moderate to strong GATA3 immunostaining

Immunohistochemistry

Image 3. Urinary bladder Muscle invasive urothelial carcinoma with moderate to strong GATA3 immunostaining of tumor cells