

Datasheet for ABIN7477491

Recombinant anti-HLA-DRA antibody**3** Images[Go to Product page](#)

Overview

| | |
|----------------|--|
| Quantity: | 1 mL |
| Target: | HLA-DRA |
| Reactivity: | Human |
| Host: | Rabbit |
| Antibody Type: | Recombinant Antibody |
| Clonality: | Monoclonal |
| Conjugate: | This HLA-DRA antibody is un-conjugated |
| Application: | Immunohistochemistry (IHC) |

Product Details

| | |
|----------|-----------|
| Clone: | MSVA-470R |
| Isotype: | IgG |

Target Details

| | |
|-------------------|---|
| Target: | HLA-DRA |
| Alternative Name: | HLA-DRa (HLA-DRA Products) |
| Background: | DR alpha chain, DRB1, DRB4, HLA class II histocompatibility antigen DR alpha chain, HLA DR1B, HLA DR3B, HLA DRA, HLA-DRA, HLADR4B, HLADRA1, HLADRB, Major histocompatibility complex class II DR alpha, Major histocompatibility complex class II DR beta 1/3/4/5, HLA-DRA antibody validated for immunohistochemistry on 76 different Normal Tissues |
| UniProt: | P01903 |

Target Details

Pathways: [TCR Signaling](#), [CXCR4-mediated Signaling Events](#), [Human Leukocyte Antigen \(HLA\) in Adaptive Immune Response](#)

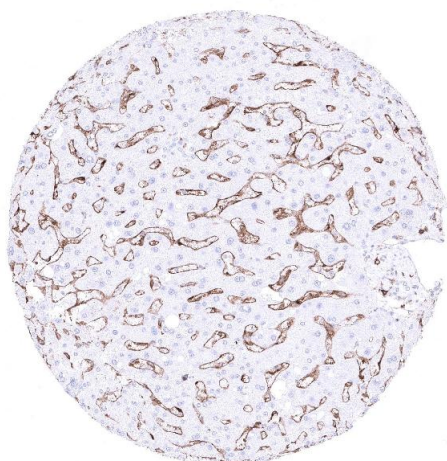
Application Details

| | |
|--------------------|--|
| Application Notes: | IHC 1:100-1:200 |
| Comment: | Positive Control: Liver: An at least moderate staining should be seen of sinusoids and Kupffer cells. Kidney: An at least moderate staining should be seen in small capillaries of glomeruli. Negative Control: Absence of HLA-DRA staining is expected in hepatocytes of a completely normal liver and in tubuli of completely normal kidney. |
| Protocol: | Manual Protocol: Freshly cut sections should be used (less than 10 days between cutting and staining). Heat-induced antigen retrieval for 5 minutes in an autoclave at 121 °C in pH 7,8 Target Retrieval Solution buffer. Apply the antibody at a dilution of 1:150 at 37 °C for 60 minutes. Visualization of bound antibody by the EnVision Kit (Dako, Agilent) according to the manufacturer's directions. |
| Restrictions: | For Research Use only |

Handling

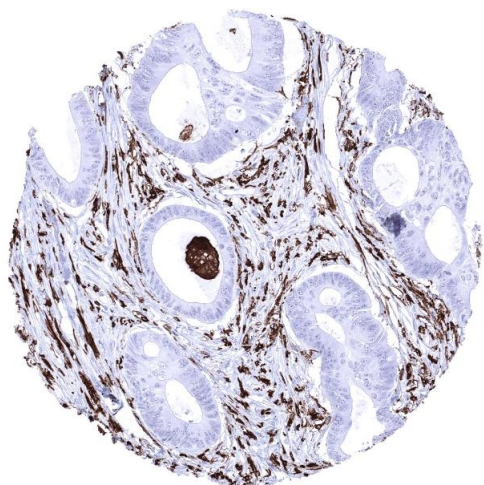
| | |
|------------------|--|
| Format: | Liquid |
| Storage: | 4 °C,-20 °C,-80 °C |
| Storage Comment: | Antibody with azide - store at 2 to 8 °C. Antibody without azide - store at -20 to -80 °C. Antibody is stable for 24 months. Non- hazardous. |

Images



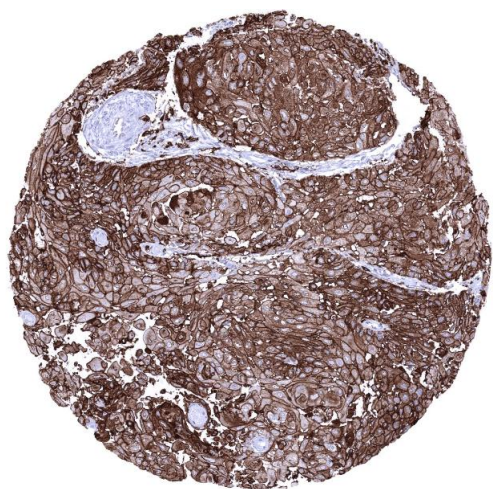
Immunohistochemistry

Image 1. Liver



Immunohistochemistry

Image 2. Colon HLA DR negative colorectal adenocarcinoma showing strong HLA DR positivity of capillaries and tumor associated inflammatory cells.



Immunohistochemistry

Image 3. Vulva Squamous cell carcinoma showing strong HLA DR immunostaining in tumor cells