

Datasheet for ABIN7477493

Recombinant anti-HLA-DRB1 antibody**3** Images[Go to Product page](#)

Overview

Quantity:	1 mL
Target:	HLA-DRB1
Reactivity:	Human
Host:	Rabbit
Antibody Type:	Recombinant Antibody
Clonality:	Monoclonal
Conjugate:	This HLA-DRB1 antibody is un-conjugated
Application:	Immunohistochemistry (IHC)

Product Details

Clone:	MSVA-478R
Isotype:	IgG

Target Details

Target:	HLA-DRB1
Alternative Name:	HLA-DRB1 (HLA-DRB1 Products)
Background:	DRB1, HLA class II histocompatibility antigen, DR-1 beta chain, HLA-DR-beta 1, HLA-DRB1, human leucocyte antigen DRB1, Leucocyte antigen DR beta 1 chain, lymphocyte antigen DRB1, major histocompatibility complex, class II, DR beta 1, MHC class II HLA-DR beta 1 chain, MHC class II HLA-DR-beta cell surface glycoprotein, HLA-DRB1 antibody validated for immunohistochemistry on 76 different Normal Tissues

Target Details

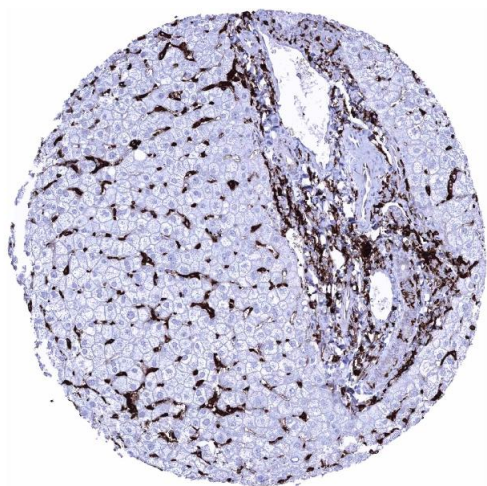
UniProt:	P01911
Pathways:	TCR Signaling , Positive Regulation of Peptide Hormone Secretion , Production of Molecular Mediator of Immune Response , CXCR4-mediated Signaling Events , Cancer Immune Checkpoints , Human Leukocyte Antigen (HLA) in Adaptive Immune Response

Application Details

Application Notes:	IHC 1:100-1:200
Comment:	Positive Control: Liver: An at least moderate staining should be seen of sinusoids and Kupffer cells. Kidney: An at least moderate staining should be seen in glomerular capillaries. Negative Control: Liver, kidney: HLA-DR staining must be absent normal in hepatocytes and in tubuli of completely normal kidney.
Protocol:	Manual Protocol: Freshly cut sections should be used (less than 10 days between cutting and staining). Heat-induced antigen retrieval for 5 minutes in an autoclave at 121 °C in pH 7,8 Target Retrieval Solution buffer. Apply the antibody at a dilution of 1:150 at 37 °C for 60 minutes. Visualization of bound antibody by the EnVision Kit (Dako, Agilent) according to the manufacturer's directions.
Restrictions:	For Research Use only

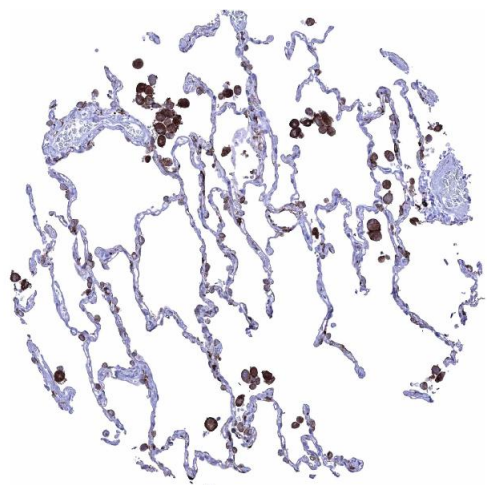
Handling

Format:	Liquid
Storage:	4 °C, -20 °C, -80 °C
Storage Comment:	Antibody with azide - store at 2 to 8 °C. Antibody without azide - store at -20 to -80 °C. Antibody is stable for 24 months. Non- hazardous.



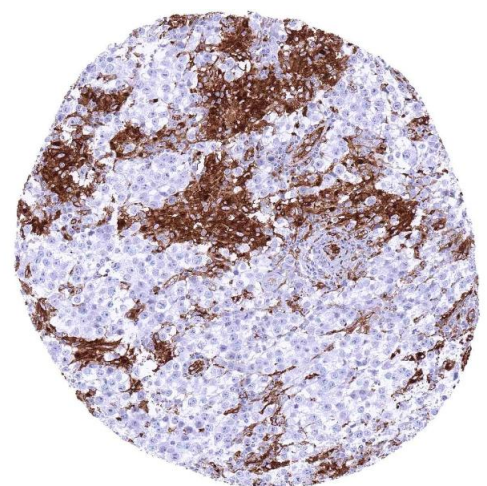
Immunohistochemistry

Image 1. Liver Intense HLA DRB1 staining of inflammatory cells and of Kupffer cells HLA DRB1 immunohistochemistry



Immunohistochemistry

Image 2. Lung Strong HLA DRB1 staining in alveolar macrophages HLA DRB1 immunohistochemistry



Immunohistochemistry

Image 3. Testis HLA DRB1 negative seminoma showing HLA DRB1 staining of inflammatory cells and of small vessels HLA DRB1 immunohistochemistry