



Datasheet for ABIN7477495

anti-Helicobacter Pylori antibody (AA 323-445)



[Go to Product page](#)

3 Images

Overview

Quantity:	1 mL
Target:	Helicobacter Pylori (H. pylori)
Binding Specificity:	AA 323-445
Reactivity:	Human
Host:	Mouse
Clonality:	Monoclonal
Conjugate:	This Helicobacter Pylori antibody is un-conjugated
Application:	Immunohistochemistry (IHC)

Product Details

Immunogen:	Recombinant Helicobacter pylori Catalase protein fragment (around aa323-445) (Exact sequence is proprietary)
Clone:	MSVA-466M
Isotype:	IgG2b, kappa

Target Details

Target:	Helicobacter Pylori (H. pylori)
Alternative Name:	Helicobacter Pylori (H. pylori Products)
Target Type:	Virus
Background:	H. pylori, Helicobacter Pylori antibody validated for immunohistochemistry on 76 different

Target Details

Normal Tissues

Application Details

Application Notes: IHC 1:100-1:200

Comment: Positive Control: Gastric tissue with known helicobacter pylori infection should show a distinct staining of bacteria on the surface and/or within glands.
Negative Control: Gastric tissue: Normal epithelial and stromal cells should not stain.

Protocol: Manual Protocol: Freshly cut sections should be used (less than 10 days between cutting and staining). Heat-induced antigen retrieval for 5 minutes in an autoclave at 121 °C in pH 7,8 Target Retrieval Solution buffer. Apply the antibody at a dilution of 1:150 at 37 °C for 60 minutes. Visualization of bound antibody by the EnVision Kit (Dako, Agilent) according to the manufacturer's directions.

Restrictions: For Research Use only

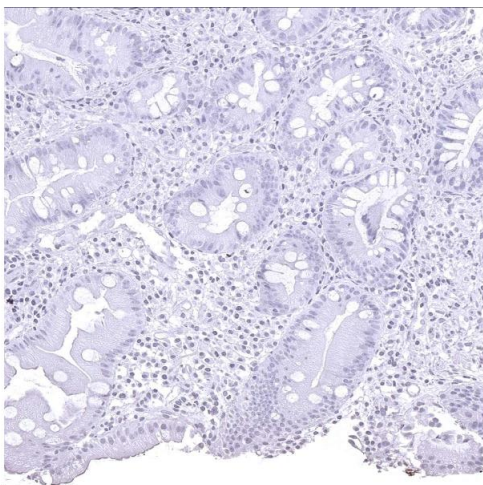
Handling

Format: Liquid

Storage: 4 °C,-20 °C,-80 °C

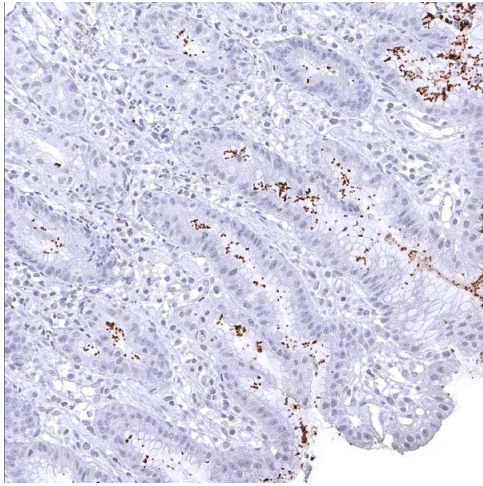
Storage Comment: Antibody with azide - store at 2 to 8 °C. Antibody without azide - store at -20 to -80 °C. Antibody is stable for 24 months. Non- hazardous.

Images



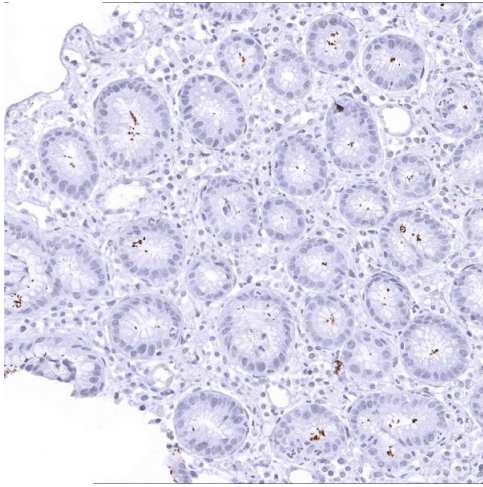
Immunohistochemistry

Image 1. Complete absence of helicobacter pylori in a stomach biopsy



Immunohistochemistry

Image 2. Abundant helicobacter pylori in a case of gastritis



Immunohistochemistry

Image 3. A moderate number of helicobacter pylori in a stomach sample