

Datasheet for ABIN7477497

Recombinant Rabbit anti-Human IgA Antibody**3** Images[Go to Product page](#)

Overview

Quantity:	1 mL
Target:	IgA
Reactivity:	Human
Host:	Rabbit
Antibody Type:	Recombinant Antibody
Clonality:	Monoclonal
Application:	Immunohistochemistry (IHC)

Product Details

Clone:	MSVA-700R
Isotype:	IgG

Target Details

Target:	IgA
Abstract:	IgA Products
Target Type:	Antibody
Background:	A2m Marker, Ig alpha 1 Chain C Region, Ig alpha 2 Chain C Region, IGHA1, IGHA2, Immunoglobulin Am1, Immunoglobulin Am2, Immunoglobulin Heavy Constant Alpha 1, Immunoglobulin Heavy Constant Alpha 2, IgA antibody validated for immunohistochemistry on 76 different Normal Tissues

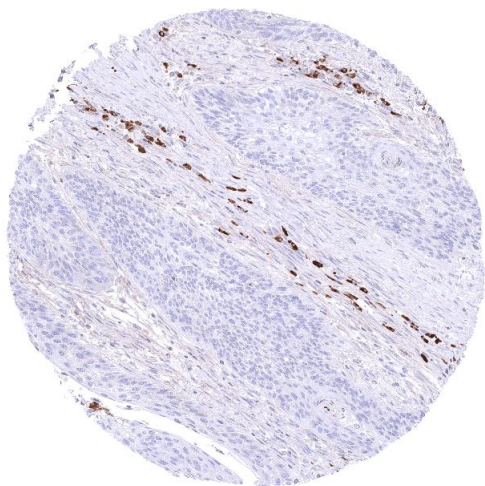
Application Details

Application Notes:	IHC 1:100-1:200
Comment:	Positive Control: Tonsil: A strong staining should be seen in a fraction of plasma cells. Negative Control: Tonsil: Lymphocytes should not stain for IgA.
Protocol:	Manual Protocol: Freshly cut sections should be used (less than 10 days between cutting and staining). Heat-induced antigen retrieval for 5 minutes in an autoclave at 121 °C in pH 7,8 Target Retrieval Solution buffer. Apply the antibody at a dilution of 1:150 at 37 °C for 60 minutes. Visualization of bound antibody by the EnVision Kit (Dako, Agilent) according to the manufacturer's directions.
Restrictions:	For Research Use only

Handling

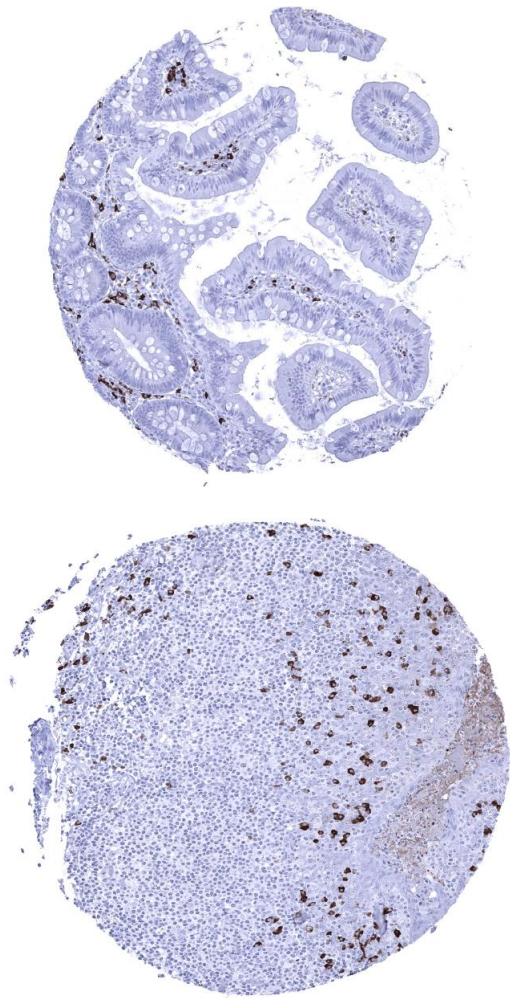
Format:	Liquid
Storage:	4 °C,-20 °C,-80 °C
Storage Comment:	Antibody with azide - store at 2 to 8 °C. Antibody without azide - store at -20 to -80 °C. Antibody is stable for 24 months. Non- hazardous.

Images



Immunohistochemistry

Image 1. Squamous cell carcinoma containing many IgA positive plasma cells in its stroma



Immunohistochemistry

Image 2. IgA positive plasma cells are abundant in the duodenum mucosa

Immunohistochemistry

Image 3. IgA positive plasma cells are numerous in the tonsil