



[Go to Product page](#)

Datasheet for ABIN7477499

Recombinant anti-IgD antibody

3 Images

Overview

Quantity:	1 mL
Target:	IgD
Reactivity:	Human
Host:	Rabbit
Antibody Type:	Recombinant Antibody
Clonality:	Monoclonal
Conjugate:	This IgD antibody is un-conjugated
Application:	Immunohistochemistry (IHC)

Product Details

Immunogen:	Recombinant human IGHD fragment
Clone:	MSVA-701R
Isotype:	IgG

Target Details

Target:	IgD
Abstract:	IgD Products
Target Type:	Antibody
Background:	Pivotal molecule in the immune response,IgD antibody validated for immunohistochemistry on 76 different Normal Tissues

Target Details

UniProt: [P01880](#)

Application Details

Application Notes: IHC 1:100-1:200

Comment: Positive Control: Tonsil: A strong IgD staining should be seen in lymphocytes of the mantle zone.
Negative Control: Tonsil: Epithelial cells and most "non-mantle zone" lymphocytes should not stain for IgD.

Protocol: Manual Protocol: Freshly cut sections should be used (less than 10 days between cutting and staining). Heat-induced antigen retrieval for 5 minutes in an autoclave at 121 °C in pH 7,8 Target Retrieval Solution buffer. Apply the antibody at a dilution of 1:150 at 37 °C for 60 minutes. Visualization of bound antibody by the EnVision Kit (Dako, Agilent) according to the manufacturer's directions.

Restrictions: For Research Use only

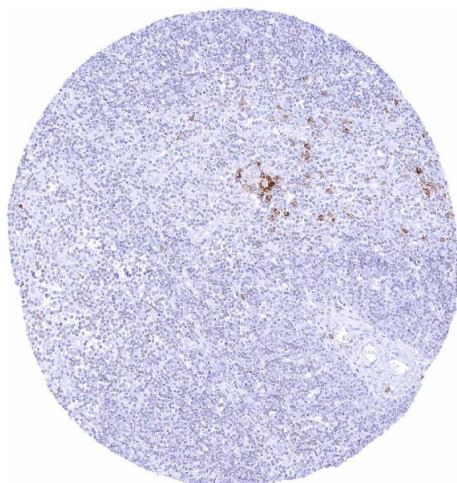
Handling

Format: Liquid

Storage: 4 °C, -20 °C, -80 °C

Storage Comment: Antibody with azide - store at 2 to 8 °C. Antibody without azide - store at -20 to -80 °C. Antibody is stable for 24 months. Non- hazardous.

Images



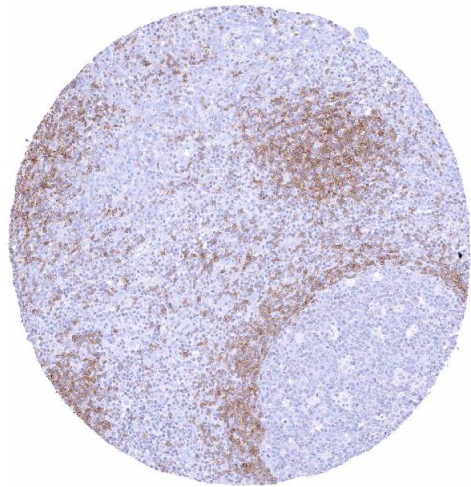
Immunohistochemistry

Image 1. Thymus Only few cells show IgD staining especially in the medulla



Immunohistochemistry

Image 2. Lymph node Diffuse large B cell lymphoma with intense IgD immunostaining of tumor cells



Immunohistochemistry

Image 3. Tonsil Strong IgD staining in a fraction of B lymphocytes especially in the mantle zone