

Datasheet for ABIN7477511

Recombinant anti-MBP antibody (AA 150-250)



[Go to Product page](#)

3 Images

Overview

Quantity:	1 mL
Target:	MBP
Binding Specificity:	AA 150-250
Reactivity:	Human
Host:	Rabbit
Antibody Type:	Recombinant Antibody
Clonality:	Monoclonal
Conjugate:	This MBP antibody is un-conjugated
Application:	Immunohistochemistry (IHC)

Product Details

Immunogen:	Recombinant fragment (around aa 150-250) of human MBP (exact sequence is proprietary)
Clone:	MSVA-390R
Isotype:	IgG

Target Details

Target:	MBP
Alternative Name:	Myelin Basic Protein (MBP Products)
Background:	GDB, Golli MBP, myelin basic protein, Hemopoietic MBP, HMBPR, HUGO, MLD, Myelin A1 Protein, basic, Myelin Deficient, Myelin membrane encephalitogenic protein, SHI, Shiverer,

Target Details

SP,Myelin Basic Protein antibody validated for immunohistochemistry on 76 different Normal Tissues

UniProt: [P02686](#)

Application Details

Application Notes: IHC 1:100-1:200

Comment: Positive Control: Brain: A fibrillar staining pattern should be seen.
Negative Control: Colon: MBP staining should be completely absent.

Protocol: Manual Protocol: Freshly cut sections should be used (less than 10 days between cutting and staining). Heat-induced antigen retrieval for 5 minutes in an autoclave at 121 °C in pH 7,8 Target Retrieval Solution buffer. Apply the antibody at a dilution of 1:150 at 37 °C for 60 minutes. Visualization of bound antibody by the EnVision Kit (Dako, Agilent) according to the manufacturer's directions.

Restrictions: For Research Use only

Handling

Format: Liquid

Storage: 4 °C,-20 °C,-80 °C

Storage Comment: Antibody with azide - store at 2 to 8 °C. Antibody without azide - store at -20 to -80 °C. Antibody is stable for 24 months. Non- hazardous.

Images



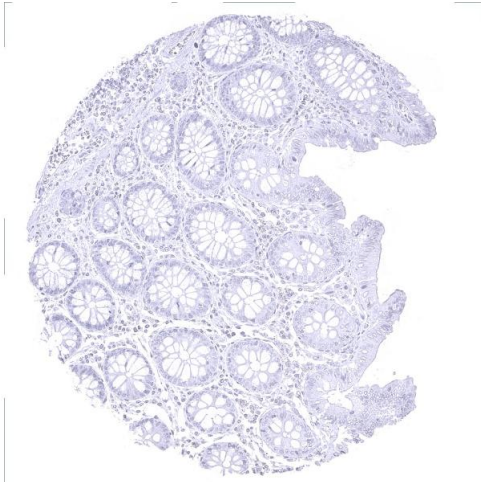
Immunohistochemistry

Image 1. Cerebrum grey



Immunohistochemistry

Image 2. cerebellum cortex Stratum moleculare



Immunohistochemistry

Image 3. colon descendens mucosa