

Datasheet for ABIN7477515

Recombinant anti-MCM7 antibody (AA 195-319)**3** Images[Go to Product page](#)

Overview

Quantity:	1 mL
Target:	MCM7
Binding Specificity:	AA 195-319
Reactivity:	Human
Host:	Rabbit
Antibody Type:	Recombinant Antibody
Clonality:	Monoclonal
Conjugate:	This MCM7 antibody is un-conjugated
Application:	Immunohistochemistry (IHC)

Product Details

Immunogen:	Recombinant human MCM7 protein fragment (aa195-319)
Clone:	MSVA-507R
Isotype:	IgG

Target Details

Target:	MCM7
Alternative Name:	MCM7 (MCM7 Products)
Background:	CDC47, DNA replication licensing factor MCM7, MCM7 mini chromosome maintenance deficient 7, Minichromosome Maintenance 7, Mini chromosome maintenance protein 7, P1.1-

Target Details

MCM3, P1CDC47, P85MCM, PNAS146, MCM7 antibody validated for immunohistochemistry on 76 different Normal Tissues

UniProt: [P33993](#)

Pathways: [DNA Damage Repair](#), [Mitotic G1-G1/S Phases](#), [DNA Replication](#), [Chromatin Binding](#), [Synthesis of DNA](#)

Application Details

Application Notes: IHC 1:100-1:200

Comment: Positive Control: Colon: A strong nuclear MCM7 immunostaining should be seen in virtually all crypt base cells.
Negative Control: Colon: MCM7 immunostaining should be largely absent in surface epithelial cells and in most stroma cells.

Protocol: Manual Protocol: Freshly cut sections should be used (less than 10 days between cutting and staining). Heat-induced antigen retrieval for 5 minutes in an autoclave at 121 °C in pH 7,8 Target Retrieval Solution buffer. Apply the antibody at a dilution of 1:150 at 37 °C for 60 minutes. Visualization of bound antibody by the EnVision Kit (Dako, Agilent) according to the manufacturer's directions.

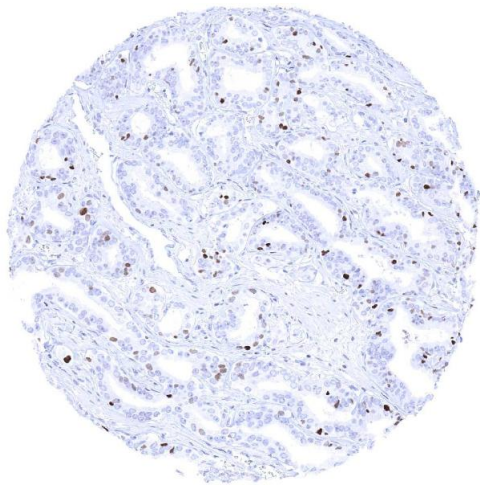
Restrictions: For Research Use only

Handling

Format: Liquid

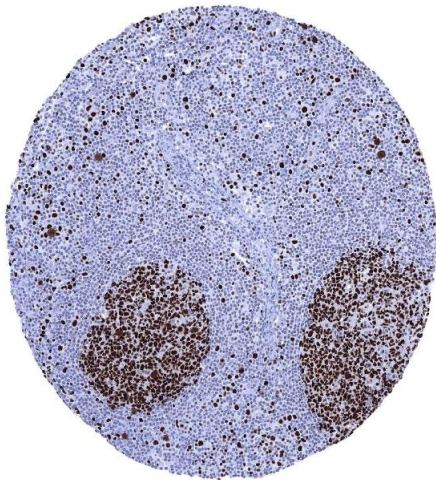
Storage: 4 °C, -20 °C, -80 °C

Storage Comment: Antibody with azide - store at 2 to 8 °C. Antibody without azide - store at -20 to -80 °C. Antibody is stable for 24 months. Non- hazardous.



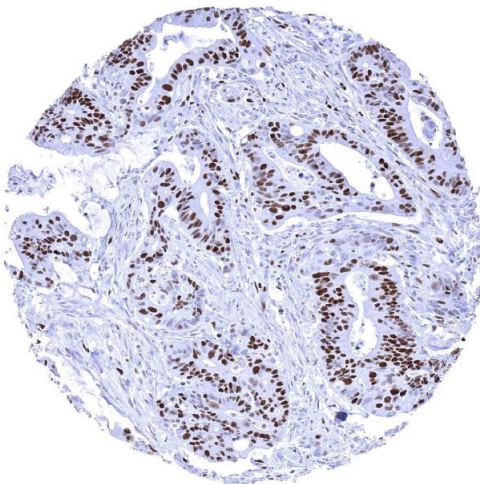
Immunohistochemistry

Image 1. Prostatatic adenocarcinoma Gleason 336 with MCM7 staining of a limited number of tumor cells



Immunohistochemistry

Image 2. In lymph nodes a particularly strong MCM7 staining occurs in most cells of germinal centres



Immunohistochemistry

Image 3. Colorectal adenocarcinoma with a large fraction of MCM7 positive tumor cells