

Datasheet for ABIN7477521

anti-Mesothelin antibody (AA 273-407)[Go to Product page](#)**3** Images

Overview

Quantity:	1 mL
Target:	Mesothelin (MSLN)
Binding Specificity:	AA 273-407
Reactivity:	Human
Host:	Mouse
Clonality:	Monoclonal
Conjugate:	This Mesothelin antibody is un-conjugated
Application:	Immunohistochemistry (IHC)

Product Details

Immunogen:	Recombinant fragment (around aa 273-407) of human Mesothelin (MSLN) protein (exact sequence is proprietary)
Clone:	MSVA-235M
Isotype:	IgG

Target Details

Target:	Mesothelin (MSLN)
Alternative Name:	Mesothelin (MSLN Products)
Background:	CAK1, Megakaryocyte potentiating factor, Mesothelin, MSLN, SMR, SMRP, Mesothelin antibody validated for immunohistochemistry on 76 different Normal Tissues

Target Details

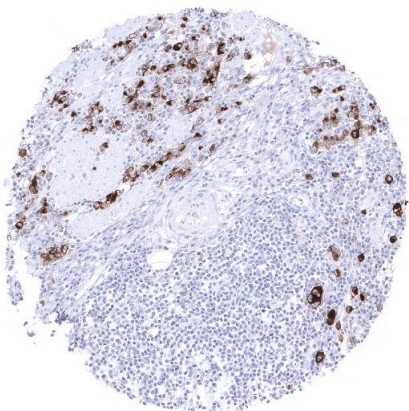
UniProt:	Q13421
Pathways:	EGFR Signaling Pathway , Positive Regulation of Peptide Hormone Secretion , Intracellular Steroid Hormone Receptor Signaling Pathway , Steroid Hormone Mediated Signaling Pathway , Carbohydrate Homeostasis , cAMP Metabolic Process , Regulation of G-Protein Coupled Receptor Protein Signaling , Positive Regulation of Endopeptidase Activity , Regulation of Carbohydrate Metabolic Process

Application Details

Application Notes:	IHC 1:100-1:200
Comment:	<p>Positive Control: Tonsil: A fraction of squamous epithelial cells of the tonsil crypts should show strong mesothelin immunostaining. Fallopian tube: An at least moderate mesothelin positivity should be seen at the apical membrane of epithelial cells.</p> <p>Negative Control: Tonsil: Squamous epithelial cells of the tonsil surface and all lymphocytes must not show mesothelin immunostaining.</p>
Protocol:	<p>Manual Protocol: Freshly cut sections should be used (less than 10 days between cutting and staining). Heat-induced antigen retrieval for 5 minutes in an autoclave at 121 °C in pH 7,8 Target Retrieval Solution buffer. Apply the antibody at a dilution of 1:150 at 37 °C for 60 minutes. Visualization of bound antibody by the EnVision Kit (Dako, Agilent) according to the manufacturer's directions.</p>
Restrictions:	For Research Use only

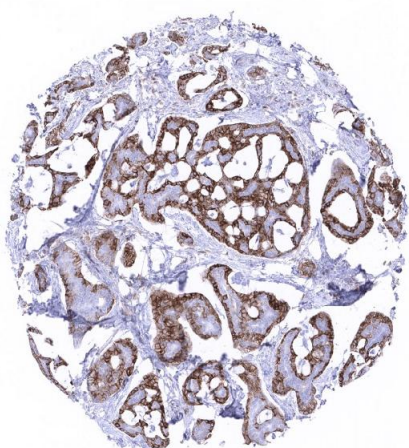
Handling

Format:	Liquid
Storage:	4 °C, -20 °C, -80 °C
Storage Comment:	Antibody with azide - store at 2 to 8 °C. Antibody without azide - store at -20 to -80 °C. Antibody is stable for 24 months. Non- hazardous.



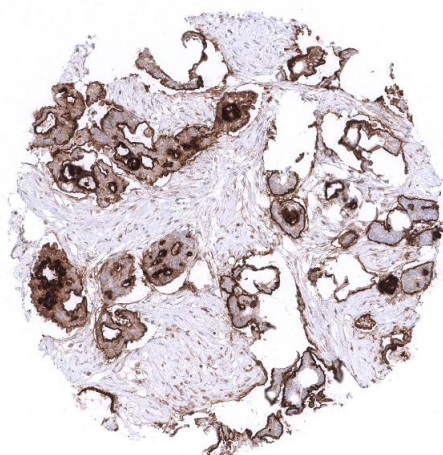
Immunohistochemistry

Image 1. Stomach Strong predominantly cytoplasmic mesothelin immunostaining in a stomach cancer with diffuse growth pattern



Immunohistochemistry

Image 2. Breast Adenoid cystic breast cancer with strong membranous mesothelin immunostaining in a subset of cells



Immunohistochemistry

Image 3. Ovary Strong predominantly membranous mesothelin staining in an endometrioid ovarian cancer