

Datasheet for ABIN7477523  
**anti-Myeloperoxidase antibody**

3 Images

[Go to Product page](#)

## Overview

Quantity:	1 mL
Target:	Myeloperoxidase (MPO)
Reactivity:	Human
Host:	Mouse
Clonality:	Monoclonal
Conjugate:	This Myeloperoxidase antibody is un-conjugated
Application:	Immunohistochemistry (IHC)

## Product Details

Immunogen:	Recombinant fragment of human MPO protein (exact sequence is proprietary)
Clone:	MSVA-692M
Isotype:	IgG

## Target Details

Target:	Myeloperoxidase (MPO)
Alternative Name:	Myeloperoxidase / MPO ( <a href="#">MPO Products</a> )
Background:	4 kDa / 89 kDa myeloperoxidase, EC 1.11.1.7, EC1.11.2.2, fj80f04, MPO, mpx, myeloid-specific peroxidase, Myeloperoxidase, Myeloperoxidase heavy chain, Myeloperoxidase light chain, Myeloperoxidase / MPO antibody validated for immunohistochemistry on 76 different Normal Tissues
UniProt:	<a href="#">P05164</a>

## Target Details

Pathways: [Chromatin Binding](#)

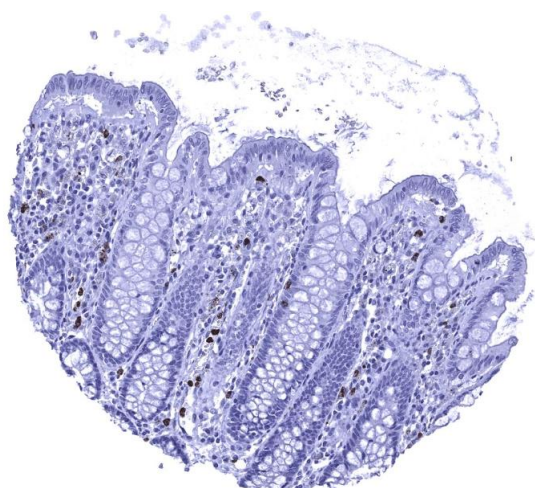
## Application Details

Application Notes:	IHC 1:100-1:200
Comment:	<p>Positive Control: Spleen: Numerous granulocytes with strong MPO staining should be seen within the red pulp of the spleen.</p> <p>Negative Control: Colon: MPO immunostaining should be absent in all epithelial cells of the colon while MPO positive granulocytes may be seen within capillaries or in the stroma of the lamina propria.</p>
Protocol:	<p>Manual Protocol: Freshly cut sections should be used (less than 10 days between cutting and staining). Heat-induced antigen retrieval for 5 minutes in an autoclave at 121 °C in pH 7,8 Target Retrieval Solution buffer. Apply the antibody at a dilution of 1:150 at 37 °C for 60 minutes. Visualization of bound antibody by the EnVision Kit (Dako, Agilent) according to the manufacturer's directions.</p>
Restrictions:	For Research Use only

## Handling

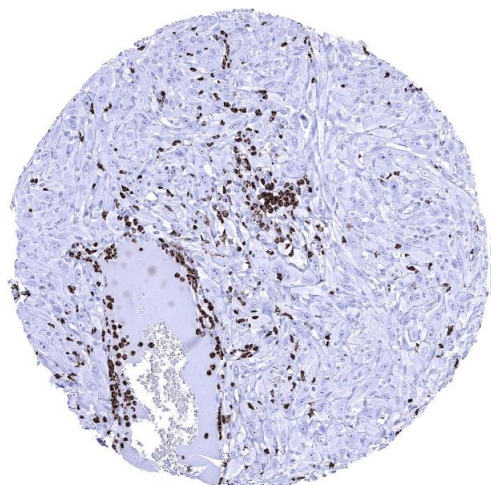
Format:	Liquid
Storage:	4 °C,-20 °C,-80 °C
Storage Comment:	Antibody with azide - store at 2 to 8 °C. Antibody without azide - store at -20 to -80 °C. Antibody is stable for 24 months. Non- hazardous.

## Images



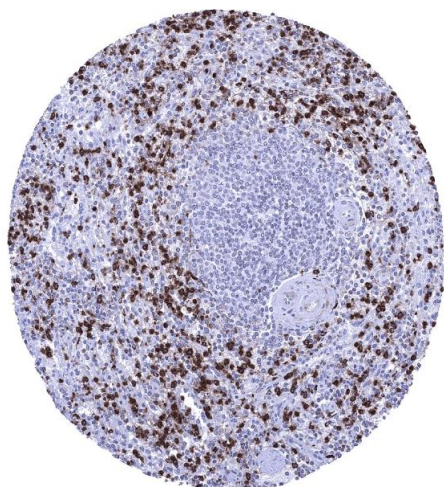
### Immunohistochemistry

**Image 1.** Colon descendens mucosa In the normal colon MPO positive granulocytes occur within small capillaries and also the stroma of the lamina propria



#### Immunohistochemistry

**Image 2.** Numerous MPO positive intravascular and stromal granulocytes are seen in a squamous cell carcinoma of the oral cavity



#### Immunohistochemistry

**Image 3.** Spleen Numerous MPO positive granulocytes are usually seen within the red pulp of the spleen