



[Go to Product page](#)

Datasheet for ABIN7477529

Recombinant anti-MUC6 antibody

3 Images

Overview

Quantity:	1 mL
Target:	MUC6
Reactivity:	Human
Host:	Rabbit
Antibody Type:	Recombinant Antibody
Clonality:	Monoclonal
Conjugate:	This MUC6 antibody is un-conjugated
Application:	Immunohistochemistry (IHC)

Product Details

Immunogen:	Recombinant full-length human MUC6 protein
Clone:	MSVA-806R
Isotype:	IgG

Target Details

Target:	MUC6
Alternative Name:	MUC6 (MUC6 Products)
Background:	Gastric mucin 6, MUC6, MUC6 mucin, Mucin 6 oligomeric mucus/gel forming, Mucin glycoprotein Fragment, Mucin-6, Secretory mucin MUC6, MUC6 antibody validated for immunohistochemistry on 76 different Normal Tissues

Target Details

UniProt: [Q6W4X9](#)

Application Details

Application Notes: IHC 1:100-1:200

Comment: Positive Control: Stomach: Mucous secreting glands should be strongly positive.
Negative Control: Stomach: Surface epithelium should be completely negative.

Protocol: Manual Protocol: Freshly cut sections should be used (less than 10 days between cutting and staining). Heat-induced antigen retrieval for 5 minutes in an autoclave at 121 °C in pH 7,8 Target Retrieval Solution buffer. Apply the antibody at a dilution of 1:150 at 37 °C for 60 minutes. Visualization of bound antibody by the EnVision Kit (Dako, Agilent) according to the manufacturer's directions.

Restrictions: For Research Use only

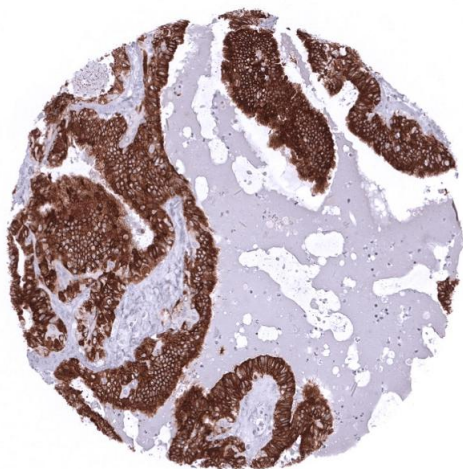
Handling

Format: Liquid

Storage: 4 °C,-20 °C,-80 °C

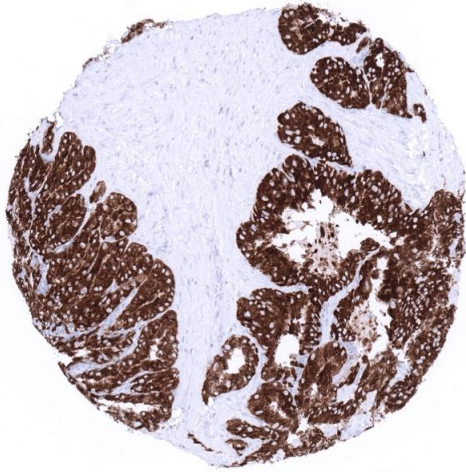
Storage Comment: Antibody with azide - store at 2 to 8 °C. Antibody without azide - store at -20 to -80 °C. Antibody is stable for 24 months. Non- hazardous.

Images



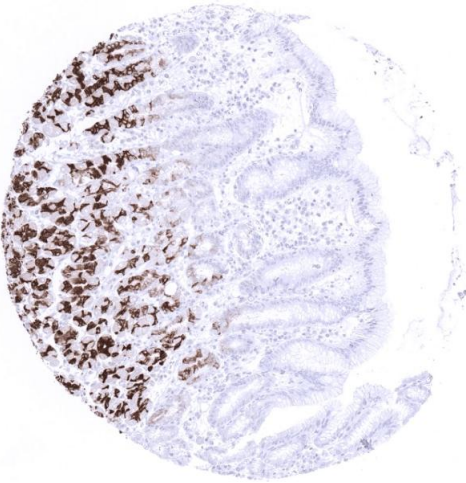
Immunohistochemistry

Image 1. Strong and diffuse MUC6 immunostaining in a colorectal adenocarcinoma



Immunohistochemistry

Image 2. Seminal vesicle epithelial cells exhibit high level MUC6 expression



Immunohistochemistry

Image 3. Moderate to strong MUC6 positivity in the mucous secreting glands but not the surface epithelium of the stomach