



[Go to Product page](#)

Datasheet for ABIN7477531

Recombinant anti-MSH2 antibody

3 Images

Overview

Quantity:	1 mL
Target:	MSH2
Reactivity:	Human
Host:	Mouse
Antibody Type:	Recombinant Antibody
Clonality:	Monoclonal
Conjugate:	This MSH2 antibody is un-conjugated
Application:	Immunohistochemistry (IHC)

Product Details

Immunogen:	Recombinant full-length human MSH2 protein
Clone:	MSVA-902M
Isotype:	IgG

Target Details

Target:	MSH2
Alternative Name:	MSH2 (MSH2 Products)
Background:	BAT26, COCA1, DNA mismatch repair protein Msh2, FCC1, hMSH2, HNPCC1, LCFS2, MSH2, MutS homolog 2, MutS homolog 2 colon cancer nonpolyposis type 1, MutS protein homolog 2, MSH2 antibody validated for immunohistochemistry on 76 different Normal Tissues

Target Details

Pathways: [DNA Damage Repair](#), [Production of Molecular Mediator of Immune Response](#)

Application Details

Application Notes: IHC 1:100-1:200

Comment: Positive Control: Tonsil: Virtually all mantle zone B-cells must show an at least weak to moderate nuclear staining. A moderate to strong nuclear staining must be seen in the germinal centre B-cells.
Negative Control: Colon adenocarcinoma with previously documented loss of MSH2 expression: no nuclear staining should be seen in cancer cells, while a nuclear staining must be seen in stromal and inflammatory cells.

Protocol: Manual Protocol: Freshly cut sections should be used (less than 10 days between cutting and staining). Heat-induced antigen retrieval for 5 minutes in an autoclave at 121 °C in pH 7,8 Target Retrieval Solution buffer. Apply the antibody at a dilution of 1:150 at 37 °C for 60 minutes. Visualization of bound antibody by the EnVision Kit (Dako, Agilent) according to the manufacturer's directions.

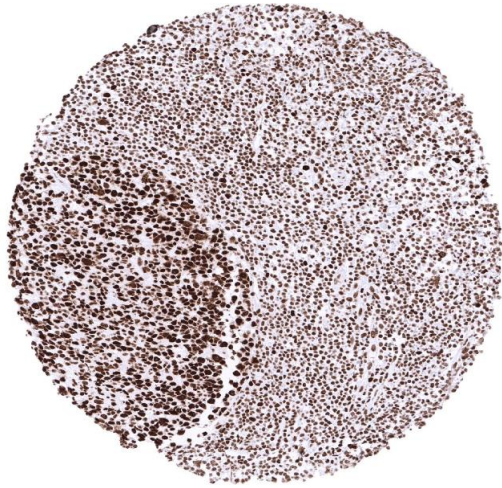
Restrictions: For Research Use only

Handling

Format: Liquid

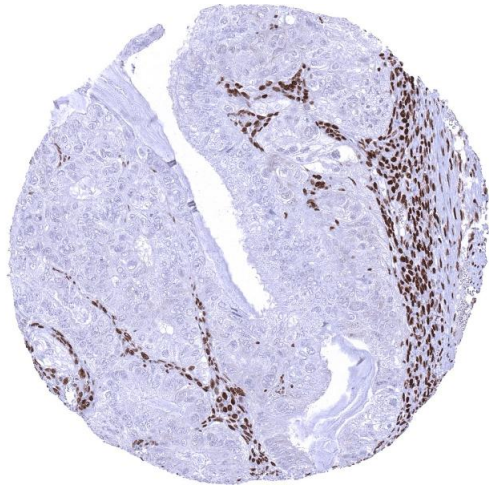
Storage: 4 °C,-20 °C,-80 °C

Storage Comment: Antibody with azide - store at 2 to 8 °C. Antibody without azide - store at -20 to -80 °C. Antibody is stable for 24 months. Non- hazardous.



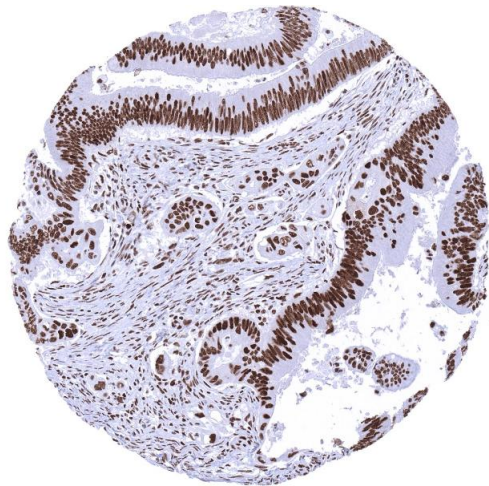
Immunohistochemistry

Image 1. Tonsil



Immunohistochemistry

Image 2. Ovary Malignant Mixed Mullerian tumor with strong MSH2 positivity in stromal and inflammatory cells but absence of staining in tumor cells



Immunohistochemistry

Image 3. Colon Colorectal adenocarcinoma with strong MSH2 immunostaining in cancer cells and in stromal cells