



[Go to Product page](#)

Datasheet for ABIN7477533

Recombinant anti-MSH6 antibody (AA 1-100)

3 Images

Overview

Quantity:	1 mL
Target:	MSH6
Binding Specificity:	AA 1-100
Reactivity:	Human
Host:	Rabbit
Antibody Type:	Recombinant Antibody
Clonality:	Monoclonal
Conjugate:	This MSH6 antibody is un-conjugated
Application:	Immunohistochemistry (IHC)

Product Details

Immunogen:	Recombinant fragment (around aa 1-100) of human MSH6 protein (exact sequence is proprietary)
Clone:	MSVA-906R
Isotype:	IgG

Target Details

Target:	MSH6
Alternative Name:	MSH6 (MSH6 Products)
Background:	DNA mismatch repair protein Msh6, G/T mismatch-binding protein, GTBP, GTMBP, hMSH6,

Target Details

HNPPC5, HSAP, MSH6, mutS (E. coli) homolog 6, MutS alpha 160 kDa subunit, MutS-alpha 160 kDa subunit, p160, Sperm associated protein,MSH6 antibody validated for immunohistochemistry on 76 different Normal Tissues

UniProt: [P52701](#)

Pathways: [DNA Damage Repair](#), [Chromatin Binding](#), [Production of Molecular Mediator of Immune Response](#)

Application Details

Application Notes: IHC 1:75-1:150

Comment: Positive Control: Tonsil: Virtually all mantle zone B-cells must show an at least weak to moderate nuclear staining. A moderate to strong nuclear staining must be seen in the germinal centre B-cells.
Negative Control: Colon adenocarcinoma with previously documented loss of MSH6 expression: Nuclear staining should be absent in cancer cells, while a nuclear staining must be seen in stromal and inflammatory cells.

Protocol: Manual Protocol: Freshly cut sections should be used (less than 10 days between cutting and staining). Heat-induced antigen retrieval for 5 minutes in an autoclave at 121 °C in pH 7,8 Target Retrieval Solution buffer. Apply the antibody at a dilution of 1:100 at 37 °C for 60 minutes. Visualization of bound antibody by the EnVision Kit (Dako, Agilent) according to the manufacturer's directions.

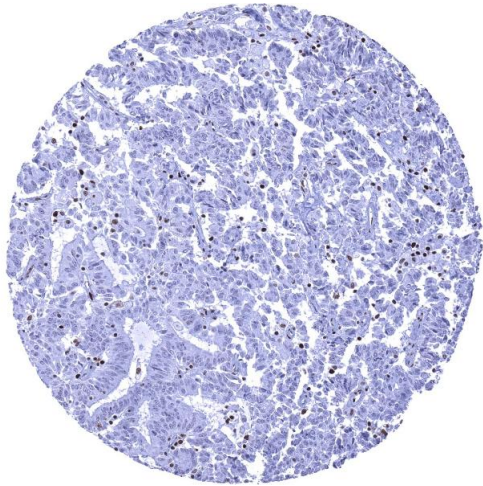
Restrictions: For Research Use only

Handling

Format: Liquid

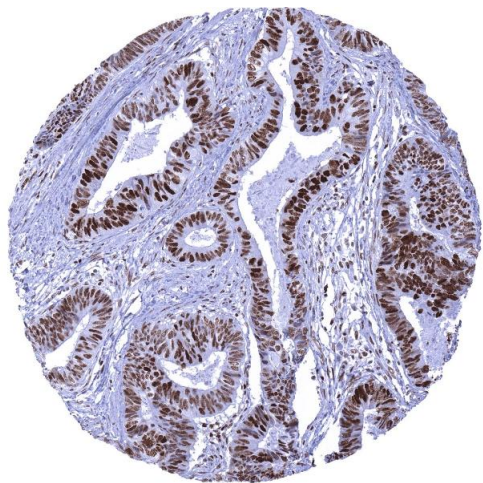
Storage: 4 °C,-20 °C,-80 °C

Storage Comment: Antibody with azide - store at 2 to 8 °C. Antibody without azide - store at -20 to -80 °C. Antibody is stable for 24 months. Non- hazardous.



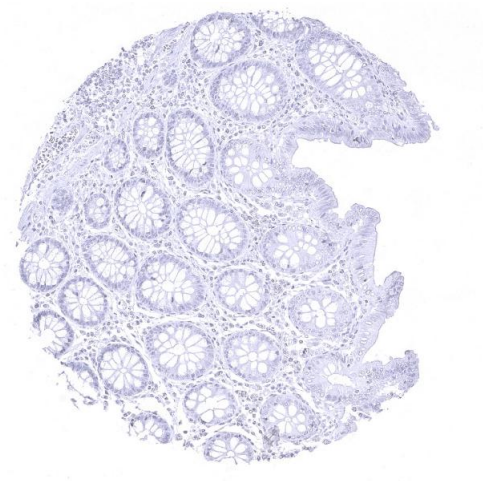
Immunohistochemistry

Image 1. Colon Colorectal adenocarcinoma with strong MSH6 immunostaining in stromal and inflammatory cells but absent MSH6 staining in cancer cells



Immunohistochemistry

Image 2. Colon Colorectal adenocarcinoma showing strong MSH6 positivity in cancer cells and moderate staining in stromal cells



Immunohistochemistry

Image 3. Colon descendens mucosa