

Datasheet for ABIN7477541

Recombinant anti-Nucleolin antibody

3 Images

[Go to Product page](#)

Overview

Quantity:	1 mL
Target:	Nucleolin (NCL)
Reactivity:	Human
Host:	Rabbit
Antibody Type:	Recombinant Antibody
Clonality:	Monoclonal
Conjugate:	This Nucleolin antibody is un-conjugated
Application:	Immunohistochemistry (IHC)

Product Details

Immunogen:	Recombinant full-length human NCL protein
Clone:	MSVA-623R
Isotype:	IgG

Target Details

Target:	Nucleolin (NCL)
Alternative Name:	Nucleolin (NCL Products)
Background:	NCL, Nucl, Nucleolin, Protein C23, Nucleolin antibody validated for immunohistochemistry on 76 different Normal Tissues
UniProt:	P19338

Target Details

Pathways: [Ribonucleoprotein Complex Subunit Organization](#)

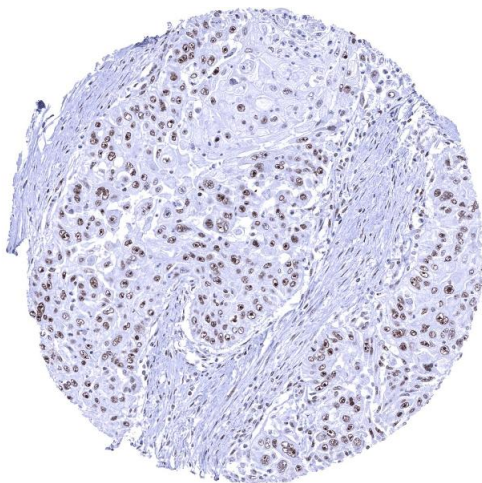
Application Details

Application Notes:	IHC 1:100-1:200
Comment:	<p>Positive Control: Colon: A nuclear nucleolin immunostaining should be seen in all cells. A focus of the staining on nucleoli should be visible - at least - in the superficial epithelial cell layer.</p> <p>Negative Control: Colon: A cytoplasmic or membranous nucleolin immunostaining should be absent in all cells.</p>
Protocol:	<p>Manual Protocol: Freshly cut sections should be used (less than 10 days between cutting and staining). Heat-induced antigen retrieval for 5 minutes in an autoclave at 121 °C in pH 7,8 Target Retrieval Solution buffer. Apply the antibody at a dilution of 1:150 at 37 °C for 60 minutes. Visualization of bound antibody by the EnVision Kit (Dako, Agilent) according to the manufacturer's directions.</p>
Restrictions:	For Research Use only

Handling

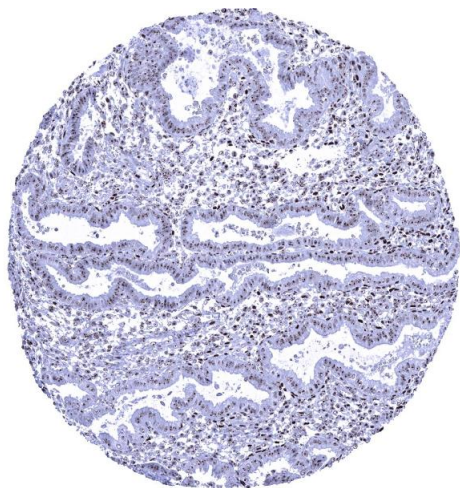
Format:	Liquid
Storage:	4 °C,-20 °C,-80 °C
Storage Comment:	Antibody with azide - store at 2 to 8 °C. Antibody without azide - store at -20 to -80 °C. Antibody is stable for 24 months. Non- hazardous.

Images



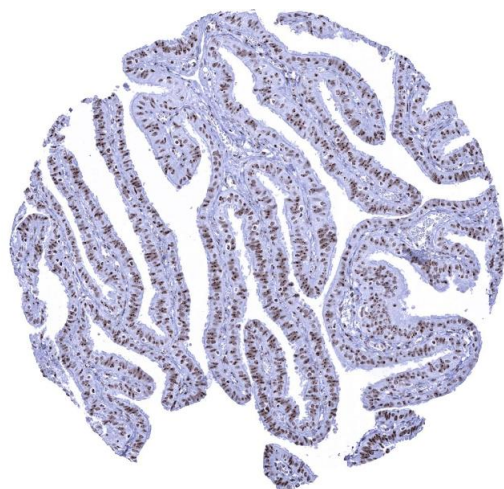
Immunohistochemistry

Image 1. Distinct nucleolar immunostaining in the nucleoli of an esophageal squamous cell carcinoma



Immunohistochemistry

Image 2. Uterus endometrium In this sample of endometrium nucleolin staining is particularly prominent in the nucleoli of epithelial and stromal cells



Immunohistochemistry

Image 3. Fallopian tube mucosa The entire nuclei of epithelial cells are nucleolin positive but the immunostaining is most distinct in the nucleolus