

Datasheet for ABIN7477543
anti-Occludin antibody (AA 282-415)[Go to Product page](#)

3 Images

Overview

Quantity:	1 mL
Target:	Occludin (OCLN)
Binding Specificity:	AA 282-415
Reactivity:	Human
Host:	Mouse
Clonality:	Monoclonal
Conjugate:	This Occludin antibody is un-conjugated
Application:	Immunohistochemistry (IHC)

Product Details

Immunogen:	ecombinant fragment of human Occludin protein (around aa 282-415) (exact sequence is proprietary)
Clone:	MSVA-415M
Isotype:	IgG

Target Details

Target:	Occludin (OCLN)
Alternative Name:	Occludin (OCLN Products)
Background:	BLCPMG, Occludin, OCLN, Phosphatase 1 regulatory subunit 115, PPP1R115, PTORCH1, Tight junction protein occludin, Occludin antibody validated for immunohistochemistry on 76 different Normal Tissues

Target Details

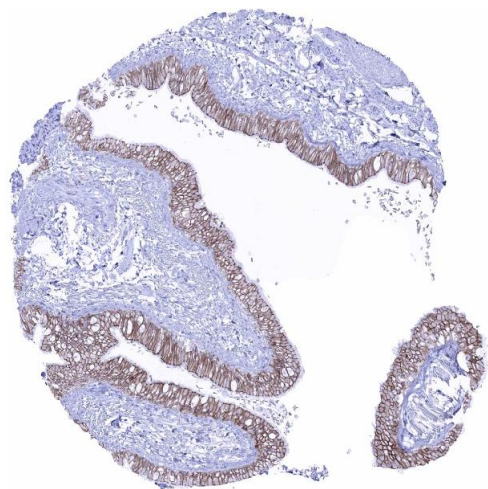
UniProt:	Q16625
Pathways:	Cell-Cell Junction Organization , Hepatitis C

Application Details

Application Notes:	IHC 1:100-1:200
Comment:	<p>Positive Control: Colon: A strong membranous occludin staining of epithelial cells should be seen with a particularly strong staining at the apical/luminal membranes.</p> <p>Negative Control: Colon: All non-epithelial and non-endothelial cells must not show any occludin staining.</p>
Protocol:	<p>Manual Protocol: Freshly cut sections should be used (less than 10 days between cutting and staining). Heat-induced antigen retrieval for 5 minutes in an autoclave at 121 °C in pH 7,8 Target Retrieval Solution buffer. Apply the antibody at a dilution of 1:150 at 37 °C for 60 minutes. Visualization of bound antibody by the EnVision Kit (Dako, Agilent) according to the manufacturer's directions.</p>
Restrictions:	For Research Use only

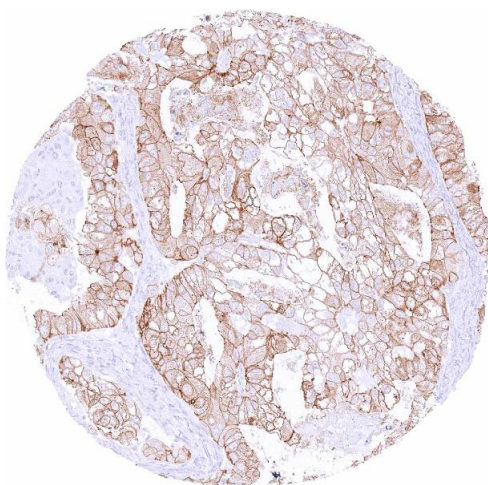
Handling

Format:	Liquid
Storage:	4 °C,-20 °C,-80 °C
Storage Comment:	Antibody with azide - store at 2 to 8 °C. Antibody without azide - store at -20 to -80 °C. Antibody is stable for 24 months. Non- hazardous.



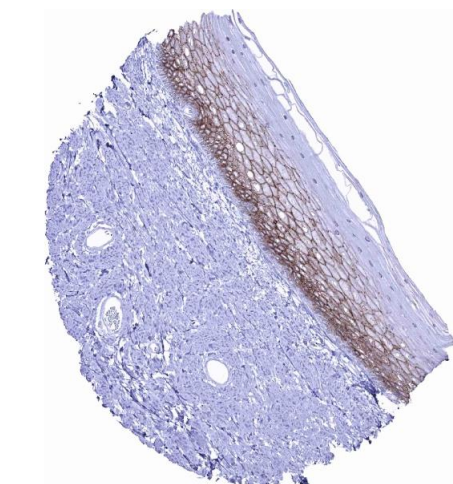
Immunohistochemistry

Image 1. Membranous occludin immunostaining of respiratory epithelium scaled



Immunohistochemistry

Image 2. Clear cell ovarian carcinoma with moderate occludin staining of tumor cells



Immunohistochemistry

Image 3. In squamous epithelium occludin positivity is regularly seen but staining is reduced or absent in basal and superficial cell layers scaled