

Datasheet for ABIN7477555

Recombinant anti-PAX8 antibody**3** Images[Go to Product page](#)

Overview

Quantity:	1 mL
Target:	PAX8
Reactivity:	Human
Host:	Rabbit
Antibody Type:	Recombinant Antibody
Clonality:	Monoclonal
Conjugate:	This PAX8 antibody is un-conjugated
Application:	Immunohistochemistry (IHC)

Product Details

Immunogen:	Recombinant fragment of human PAX8 protein
Clone:	MSVA-708R
Isotype:	IgG

Target Details

Target:	PAX8
Alternative Name:	PAX8 (PAX8 Products)
Background:	Paired box gene 8, Paired domain gene 8, PAX8, paired box homeotic gene 8, PAX8 antibody validated for immunohistochemistry on 76 different Normal Tissues
UniProt:	Q06710

Target Details

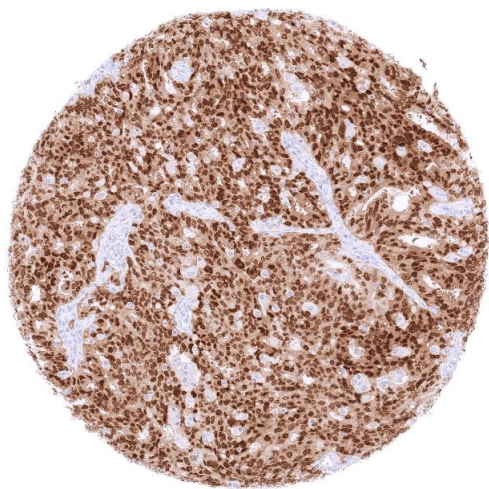
Pathways: [Thyroid Hormone Synthesis](#), [Regulation of Hormone Metabolic Process](#), [Stem Cell Maintenance](#), [Tube Formation](#)

Application Details

Application Notes:	IHC 1:100-1:200
Comment:	<p>Positive Control: Kidney: At least weak to moderate, distinct nuclear staining should be seen in the majority of epithelial cells of the proximal and distal renal tubules, collection ducts, and the parietal epithelial cells of the Bowman's capsule.</p> <p>Negative Control: Kidney: At least weak to moderate, distinct nuclear staining should be seen in the majority of epithelial cells of the proximal and distal renal tubules, collection ducts, and the parietal epithelial cells of the Bowman's capsule.</p>
Protocol:	<p>Manual Protocol: Freshly cut sections should be used (less than 10 days between cutting and staining). Heat-induced antigen retrieval for 5 minutes in an autoclave at 121 °C in pH 7,8 Target Retrieval Solution buffer. Apply the antibody at a dilution of 1:100 at 37 °C for 60 minutes. Visualization of bound antibody by the EnVision Kit (Dako, Agilent) according to the manufacturer's directions.</p>
Restrictions:	For Research Use only

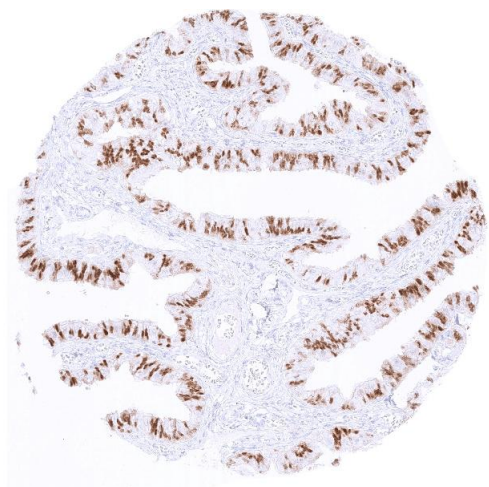
Handling

Format:	Liquid
Storage:	4 °C, -20 °C, -80 °C
Storage Comment:	Antibody with azide - store at 2 to 8 °C. Antibody without azide - store at -20 to -80 °C. Antibody is stable for 24 months. Non- hazardous.



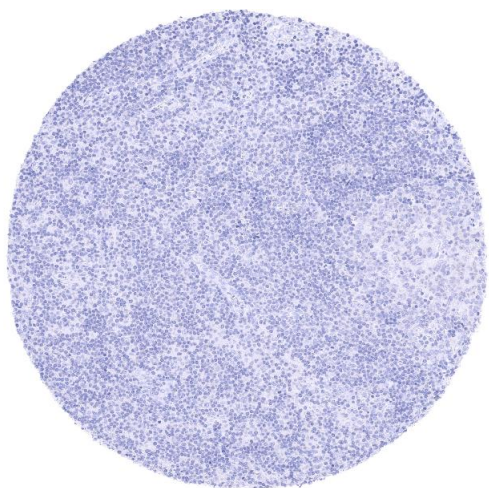
Immunohistochemistry

Image 1. Serous high grade ovarian carcinoma with strong PAX8 staining of tumor cells



Immunohistochemistry

Image 2. Strong nuclear PAX8 staining of a subset of epithelial cells in the fallopian tube



Immunohistochemistry

Image 3. PAX8 staining is completely absent in lymphocytes lymph node