



[Go to Product page](#)

Datasheet for ABIN7477567

## Recombinant anti-Progesterone Receptor antibody (AA 1-200)

### 3 Images

#### Overview

Quantity:	1 mL
Target:	Progesterone Receptor (PGR)
Binding Specificity:	AA 1-200
Reactivity:	Human
Host:	Rabbit
Antibody Type:	Recombinant Antibody
Clonality:	Monoclonal
Conjugate:	This Progesterone Receptor antibody is un-conjugated
Application:	Immunohistochemistry (IHC)

#### Product Details

Immunogen:	Recombinant fragment (around aa 1-200) of human PGR (exact sequence is proprietary)
Clone:	MSVA-570R
Isotype:	IgG

#### Target Details

Target:	Progesterone Receptor (PGR)
Alternative Name:	Progesterone Receptor ( <a href="#">PGR Products</a> )
Background:	R3C3, Nuclear receptor subfamily 3 group C member 3, PGR, PR, PRA, PRB, Progesterone receptor form A, Progesterone receptor form B, Progesterone Receptor antibody validated for

## Target Details

---

immunohistochemistry on 76 different Normal Tissues

UniProt: [P06401](#)

Pathways: [Nuclear Receptor Transcription Pathway](#), [Intracellular Steroid Hormone Receptor Signaling Pathway](#), [Steroid Hormone Mediated Signaling Pathway](#), [Smooth Muscle Cell Migration](#)

## Application Details

---

Application Notes: IHC 1:50-1:100

Comment: Positive Control: Uterine cervix: almost all columnar epithelial cells, basal squamous epithelial cells and most of the stromal cells must show a strong nuclear staining with only minimal cytoplasmic staining.  
Negative Control: Tonsil: PR immunostaining should be absent in all epithelial and non-epithelial cells.

Protocol: Manual Protocol: Freshly cut sections should be used (less than 10 days between cutting and staining). Heat-induced antigen retrieval for 5 minutes in an autoclave at 121 °C in pH 7,8 Target Retrieval Solution buffer. Apply the antibody at a dilution of 1:50 at 37 °C for 60 minutes. Visualization of bound antibody by the EnVision Kit (Dako, Agilent) according to the manufacturer's directions.

Restrictions: For Research Use only

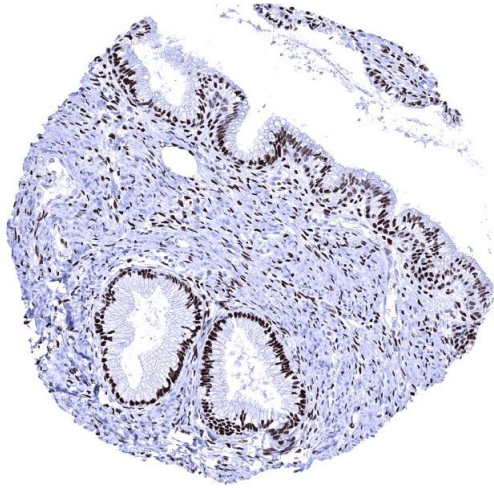
## Handling

---

Format: Liquid

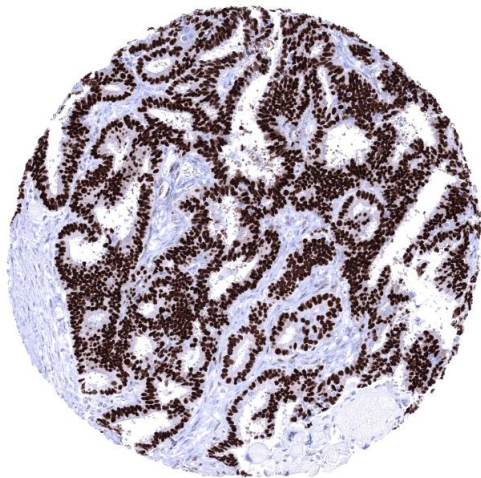
Storage: 4 °C,-20 °C,-80 °C

Storage Comment: Antibody with azide - store at 2 to 8 °C. Antibody without azide - store at -20 to -80 °C. Antibody is stable for 24 months. Non- hazardous.



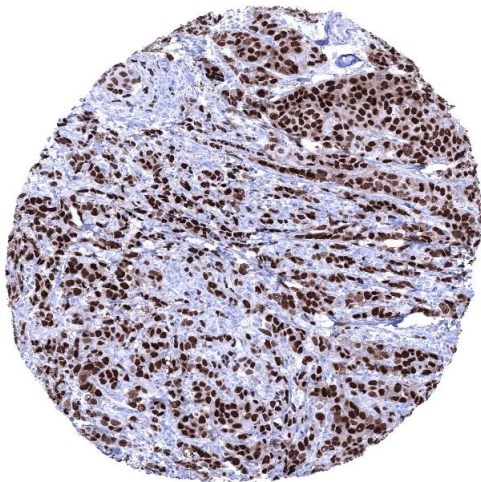
#### Immunohistochemistry

**Image 1.** Uterus endocervix Strong PR immunostaining in epithelial and stromal cells of the endocervix



#### Immunohistochemistry

**Image 2.** Endometrioid carcinoma of the ovary depicting a strong PR immunostaining of all tumor cells



#### Immunohistochemistry

**Image 3.** Invasive breast cancer of no special type NST with strong PR immunostaining in 100 of tumor cells