



[Go to Product page](#)

Datasheet for ABIN7477573

Recombinant anti-PTH antibody (AA 1-34)

3 Images

Overview

Quantity:	1 mL
Target:	PTH
Binding Specificity:	AA 1-34
Reactivity:	Human
Host:	Rabbit
Antibody Type:	Recombinant Antibody
Clonality:	Monoclonal
Conjugate:	This PTH antibody is un-conjugated
Application:	Immunohistochemistry (IHC)

Product Details

Immunogen:	A synthetic peptide around aa 1-34 of human mature-PTH-polypeptide (exact sequence is proprietary)
Clone:	MSVA-525R
Isotype:	IgG

Target Details

Target:	PTH
Alternative Name:	PTH (PTH Products)
Target Type:	Hormone

Target Details

Background: HPTH, Parathormone, Parathyrin, Parathyroid hormone 1 (PTH1), Parathyroid hormone (PTH),PTH antibody validated for immunohistochemistry on 76 different Normal Tissues

UniProt: [P01270](#)

Pathways: [cAMP Metabolic Process](#), [Regulation of Carbohydrate Metabolic Process](#)

Application Details

Application Notes: IHC 1:100-1:200

Comment: Positive Control: Pituitary gland: A strong PTH immunostaining should be seen in all epithelial cells.
Negative Control: Kidney: PTH immunostaining should be absent in all cells.

Protocol: Manual Protocol: Freshly cut sections should be used (less than 10 days between cutting and staining). Heat-induced antigen retrieval for 5 minutes in an autoclave at 121 °C in pH 7,8 Target Retrieval Solution buffer. Apply the antibody at a dilution of 1:150 at 37 °C for 60 minutes. Visualization of bound antibody by the EnVision Kit (Dako, Agilent) according to the manufacturer's directions.

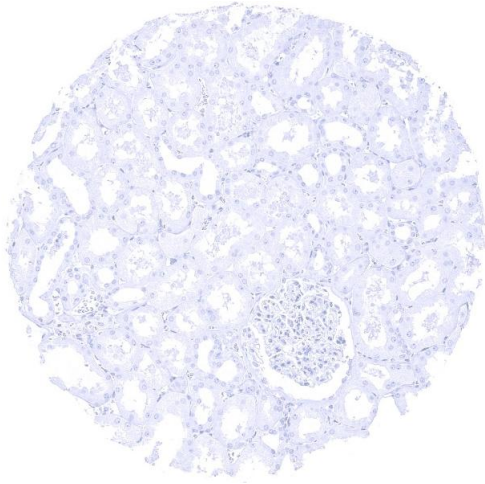
Restrictions: For Research Use only

Handling

Format: Liquid

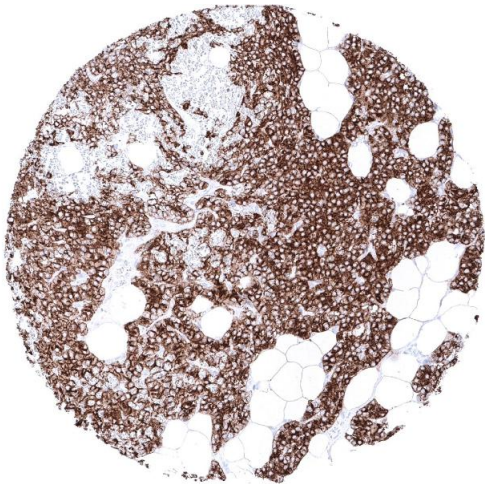
Storage: 4 °C,-20 °C,-80 °C

Storage Comment: Antibody with azide - store at 2 to 8 °C. Antibody without azide - store at -20 to -80 °C. Antibody is stable for 24 months. Non- hazardous.



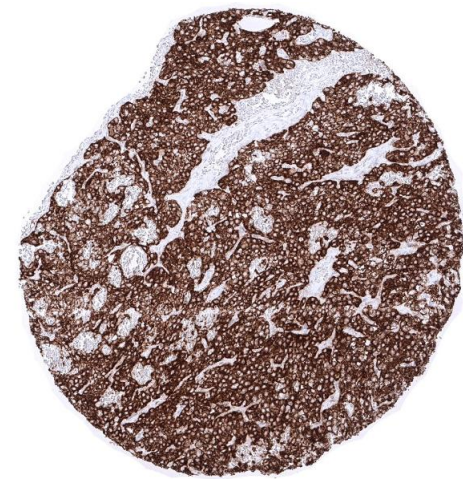
Immunohistochemistry

Image 1. Kidney cortex



Immunohistochemistry

Image 2. Parathyroid Strong cytoplasmic PTH immunostaining of all cells of a parathyroid gland



Immunohistochemistry

Image 3. Parathyroid Parathyroid gland showing intense cytoplasmic PTH immunostaining of all glandular cells