

Datasheet for ABIN7477577

Recombinant anti-Synaptophysin antibody (AA 274-313)[Go to Product page](#)**3** Images

Overview

Quantity:	1 mL
Target:	Synaptophysin (SYP)
Binding Specificity:	AA 274-313
Reactivity:	Human
Host:	Rabbit
Antibody Type:	Recombinant Antibody
Clonality:	Monoclonal
Conjugate:	This Synaptophysin antibody is un-conjugated
Application:	Immunohistochemistry (IHC)

Product Details

Immunogen:	Recombinant fragment (around aa 274-313) of human Synaptophysin (SYP) protein (exact sequence is proprietary)
Clone:	MSVA-462R
Isotype:	IgG

Target Details

Target:	Synaptophysin (SYP)
Alternative Name:	Synaptophysin (SYP Products)
Background:	Major synaptic vesicle protein p38, MRX96, MRXSYP, Syn p38, Syp, SYPH, Synaptophysin

Target Details

antibody validated for immunohistochemistry on 76 different Normal Tissues

UniProt: [P08247](#)

Pathways: [Regulation of G-Protein Coupled Receptor Protein Signaling](#), [Regulation of long-term Neuronal Synaptic Plasticity](#)

Application Details

Application Notes: IHC 1:100-1:200

Comment: Positive Control: Colon: A moderate to strong staining of the axons of the Auerbach's and Meissner's plexus should be seen while the endocrine cells of the mucosa and the peripheral nerves in the mucosa must show an at least a weak to moderate staining. Pancreas: A strong staining should be seen in islets of Langerhans and in peripheral nerve fibres located between the exocrine cells.

Negative Control: Colon: All non-endocrine epithelial cells and lymphocytes should not show any staining.

Protocol: Manual Protocol: Freshly cut sections should be used (less than 10 days between cutting and staining). Heat-induced antigen retrieval for 5 minutes in an autoclave at 121 °C in pH 7,8 Target Retrieval Solution buffer. Apply the antibody at a dilution of 1:150 at 37 °C for 60 minutes. Visualization of bound antibody by the EnVision Kit (Dako, Agilent) according to the manufacturer's directions.

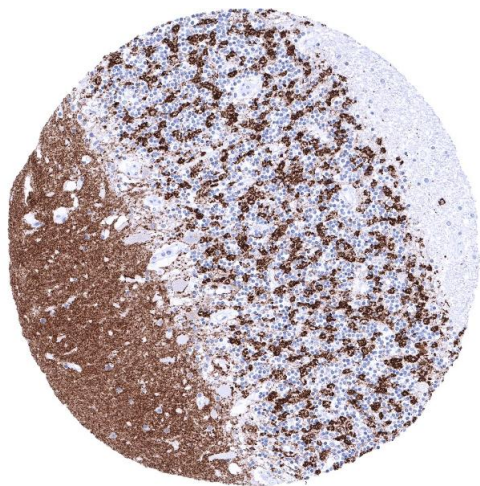
Restrictions: For Research Use only

Handling

Format: Liquid

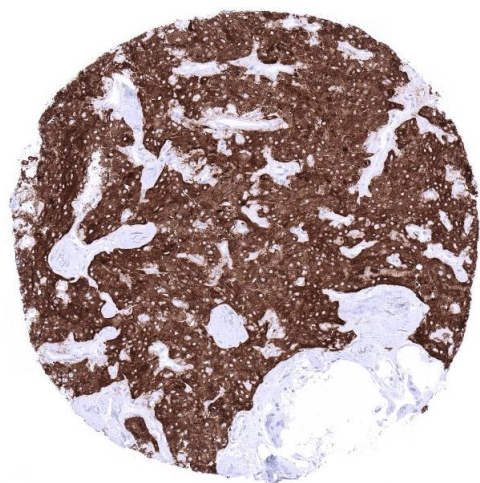
Storage: 4 °C, -20 °C, -80 °C

Storage Comment: Antibody with azide - store at 2 to 8 °C. Antibody without azide - store at -20 to -80 °C. Antibody is stable for 24 months. Non- hazardous.



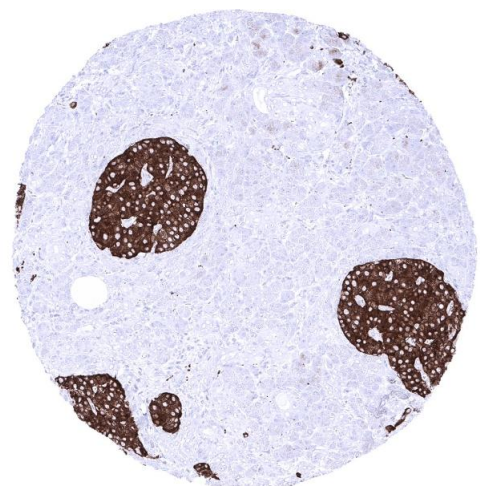
Immunohistochemistry

Image 1. Cerebellum molecular granular and Purkinje layers white matter Synaptophysin is strongly expressed in cerebellum molecular Purkinje and granular layer



Immunohistochemistry

Image 2. Thyroid Medullary carcinoma with strong cytoplasmic synaptophysin immunostaining of all tumor cells



Immunohistochemistry

Image 3. Pancreas A strong synaptophysin immunostaining is seen in islet cells of Langerhans