



[Go to Product page](#)

Datasheet for ABIN747758
anti-IL1R2 antibody (AA 301-398)

4 Images

Overview

Quantity:	100 µL
Target:	IL1R2
Binding Specificity:	AA 301-398
Reactivity:	Human, Mouse, Rat
Host:	Rabbit
Clonality:	Polyclonal
Conjugate:	This IL1R2 antibody is un-conjugated
Application:	Western Blotting (WB), ELISA, Flow Cytometry (FACS), Immunofluorescence (Cultured Cells) (IF (cc)), Immunofluorescence (Paraffin-embedded Sections) (IF (p)), Immunohistochemistry (Paraffin-embedded Sections) (IHC (p)), Immunohistochemistry (Frozen Sections) (IHC (fro))

Product Details

Immunogen:	KLH conjugated synthetic peptide derived from human IL-1R II
Isotype:	IgG
Cross-Reactivity:	Human, Mouse, Rat
Predicted Reactivity:	Dog
Purification:	Purified by Protein A.

Target Details

Target:	IL1R2
---------	-------

Target Details

Alternative Name: [IL-1R2 \(IL1R2 Products\)](#)

Background: Synonyms: IL1RB, CD121b, IL1R2c, CDw121b, IL-1R-2, IL-1RT2, IL-1RT-2, Interleukin-1 receptor type 2, CD121 antigen-like family member B, IL-1 type II receptor, Interleukin-1 receptor beta, IL-1R-beta, Interleukin-1 receptor type II, IL1R2

Background: Non-signaling receptor for IL1A, IL1B and IL1RN. Reduces IL1B activities. Serves as a decoy receptor by competitive binding to IL1B and preventing its binding to IL1R1. Also modulates cellular response through non-signaling association with IL1RAP after binding to IL1B. IL1R2 (membrane and secreted forms) preferentially binds IL1B and poorly IL1A and IL1RN. The secreted IL1R2 recruits secreted IL1RAP with high affinity, this complex formation may be the dominant mechanism for neutralization of IL1B by secreted/soluble receptors.

Gene ID: 7850

UniProt: [P27930](#)

Pathways: [NF-kappaB Signaling](#)

Application Details

Application Notes: WB 1:300-5000
ELISA 1:500-1000
FCM 1:20-100
IHC-P 1:200-400
IHC-F 1:100-500
IF(IHC-P) 1:50-200
IF(IHC-F) 1:50-200
IF(ICC) 1:50-200

Restrictions: For Research Use only

Handling

Format: Liquid

Concentration: 1 µg/µL

Buffer: 0.01M TBS(pH 7.4) with 1 % BSA, 0.02 % Proclin300 and 50 % Glycerol.

Preservative: ProClin

Precaution of Use: This product contains ProClin: a POISONOUS AND HAZARDOUS SUBSTANCE, which should be handled by trained staff only.

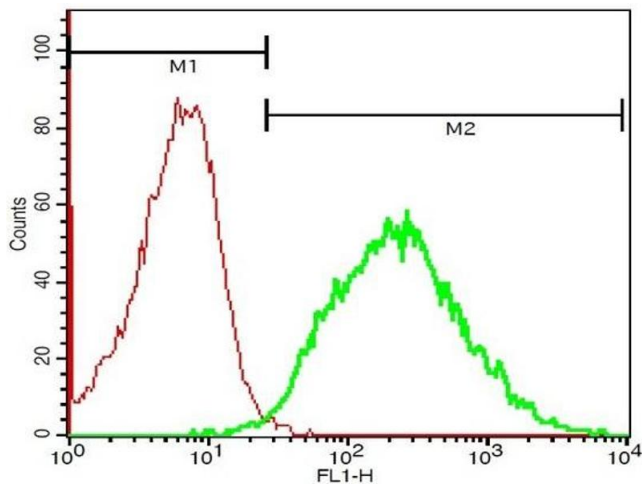
Handling

Storage: 4 °C, -20 °C

Storage Comment: Shipped at 4°C. Store at -20°C for one year. Avoid repeated freeze/thaw cycles.

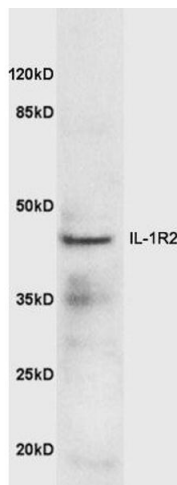
Expiry Date: 12 months

Images



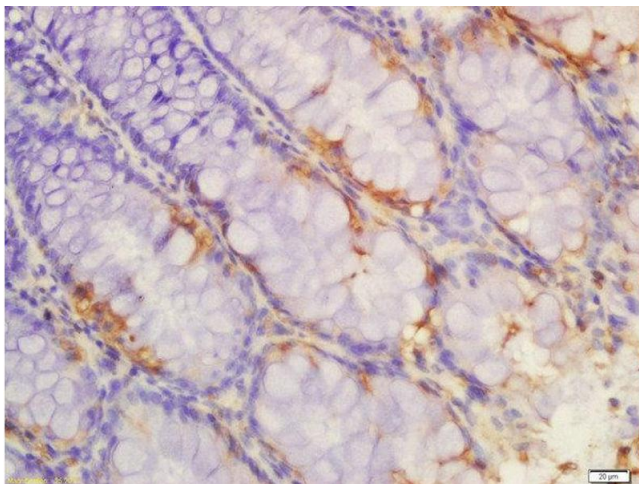
Flow Cytometry

Image 1. Mouse spleen cells probed with Rabbit Anti-IL-1R2 Polyclonal Antibody, FITC Conjugated (ABIN747758-FITC) (green) at 1:50 for 60 minutes compared to control cells (red).



Western Blotting

Image 2. Mouse lung lysates probed with Anti-IL-1R2 Polyclonal Antibody at 1:5000 90min in 37°C.



Immunohistochemistry (Paraffin-embedded Sections)

Image 3. Formalin-fixed and paraffin embedded rat colon labeled with Anti-IL-1R2 Polyclonal Antibody, Unconjugated at 1:200 followed by conjugation to the secondary antibody and DAB staining

Images

Please check the [product details page](#) for more images. Overall 4 images are available for ABIN747758.