

Datasheet for ABIN7477583

**anti-S100A12 antibody**

3 Images

[Go to Product page](#)

## Overview

Quantity:	1 mL
Target:	S100A12
Reactivity:	Human
Host:	Mouse
Clonality:	Monoclonal
Conjugate:	This S100A12 antibody is un-conjugated
Application:	Immunohistochemistry (IHC)

## Product Details

Clone:	MSVA-812M
Isotype:	IgG

## Target Details

Target:	S100A12
Alternative Name:	S100A12 ( <a href="#">S100A12 Products</a> )
Background:	CAAF1, CAGC, CGRP, ENRAGE, MRP6, p6, S100A12 antibody validated for immunohistochemistry on 76 different Normal Tissues
UniProt:	<a href="#">P80511</a>
Pathways:	<a href="#">Toll-Like Receptors Cascades</a> , <a href="#">S100 Proteins</a>

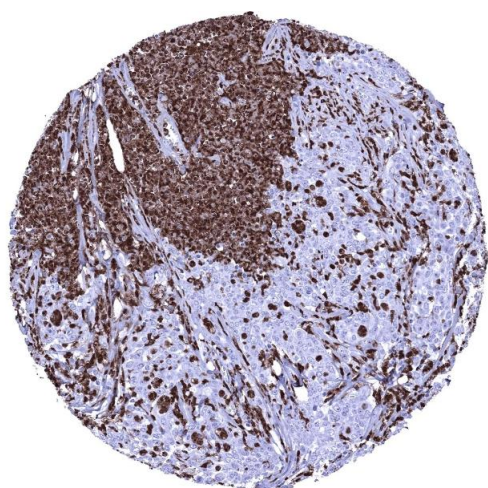
## Application Details

Application Notes:	IHC 1:100-1:200
Comment:	<p>Positive Control: Spleen: A significant number of inflammatory cells should show a strong S100A12 immunostaining while the majority of cells remain completely negative.</p> <p>Negative Control: Colon: All epithelial and muscular cells must not show any S100A12 immunostaining. Few scattered S100A12 positive inflammatory cells can occur (mostly within blood vessels)</p>
Protocol:	<p>Manual Protocol: Freshly cut sections should be used (less than 10 days between cutting and staining). Heat-induced antigen retrieval for 5 minutes in an autoclave at 121 °C in pH 7,8 Target Retrieval Solution buffer. Apply the antibody at a dilution of 1:150 at 37 °C for 60 minutes. Visualization of bound antibody by the EnVision Kit (Dako, Agilent) according to the manufacturer's directions.</p>
Restrictions:	For Research Use only

## Handling

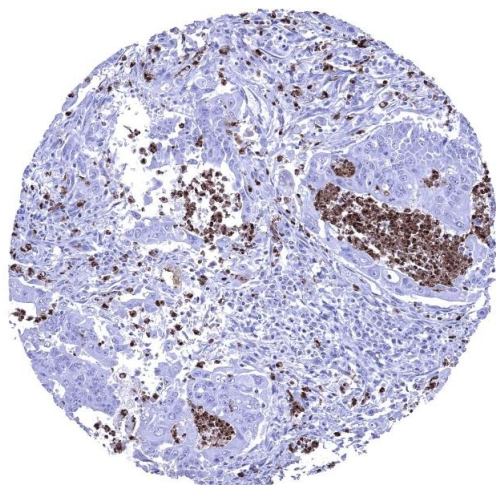
Format:	Liquid
Storage:	4 °C, -20 °C, -80 °C
Storage Comment:	Antibody with azide - store at 2 to 8 °C. Antibody without azide - store at -20 to -80 °C. Antibody is stable for 24 months. Non- hazardous.

## Images



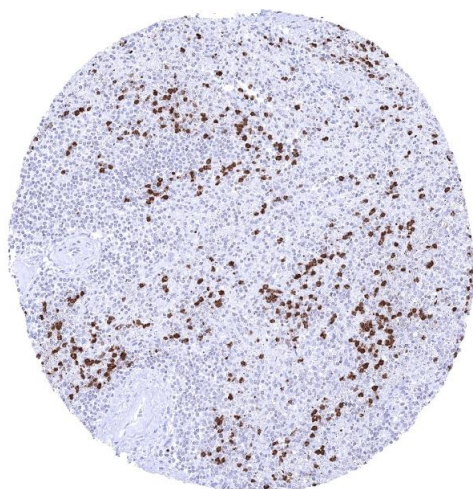
### Immunohistochemistry

**Image 1.** Stomach Gastric adenocarcinoma densely infiltrated by S100A12 positive granulocytes.



#### Immunohistochemistry

**Image 2.** Colon Colorectal adenocarcinoma showing numerous S100A12 positive granulocytes in the stroma and within tumor glands



#### Immunohistochemistry

**Image 3.** Spleen S100A12 immunostaining is seen in granulocytes of mainly the red pulp.