



[Go to Product page](#)

Datasheet for ABIN7477587

Recombinant anti-SOX9 antibody (AA 393-508)

3 Images

Overview

Quantity:	1 mL
Target:	SOX9
Binding Specificity:	AA 393-508
Reactivity:	Human
Host:	Rabbit
Antibody Type:	Recombinant Antibody
Clonality:	Monoclonal
Conjugate:	This SOX9 antibody is un-conjugated
Application:	Immunohistochemistry (IHC)

Product Details

Immunogen:	Recombinant humanSOX9 protein fragment (around aa 393- 508) (exact sequence is proprietary)
Clone:	MSVA-709R
Isotype:	IgG

Target Details

Target:	SOX9
Alternative Name:	SOX9 (SOX9 Products)
Background:	Campomelic Dysplasia Autosomal Sex Reversal (CMD1), SRA1, SRXX2, SRY (sex determining

Target Details

region Y) box 9, SRY related HMG box gene 9, Transcription factor SOX9,SOX9 antibody validated for immunohistochemistry on 76 different Normal Tissues

UniProt: [P48436](#)

Pathways: [EGFR Signaling Pathway](#), [Stem Cell Maintenance](#), [Regulation of Muscle Cell Differentiation](#), [Tube Formation](#), [Skeletal Muscle Fiber Development](#)

Application Details

Application Notes: IHC 1:100-1:200

Comment: Positive Control: Colon: A strong SOX9 immunostaining should be seen in epithelial cells of the crypt base.
Negative Control: Colon: SOX9 immunostaining should be absent in all non-epithelial cell types (except few cells in lymphoid germinal centres - if present).

Protocol: Manual Protocol: Freshly cut sections should be used (less than 10 days between cutting and staining). Heat-induced antigen retrieval for 5 minutes in an autoclave at 121 °C in pH 7,8 Target Retrieval Solution buffer. Apply the antibody at a dilution of 1:150 at 37 °C for 60 minutes. Visualization of bound antibody by the EnVision Kit (Dako, Agilent) according to the manufacturer's directions.

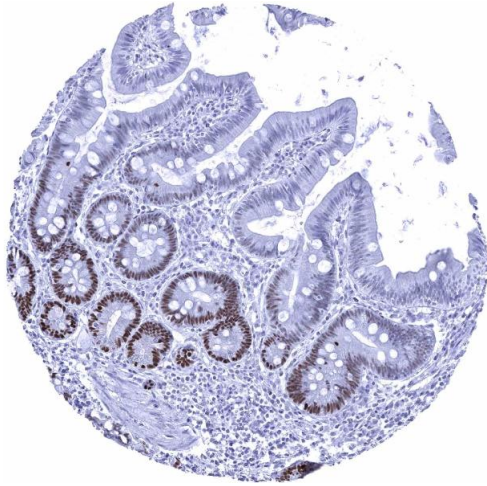
Restrictions: For Research Use only

Handling

Format: Liquid

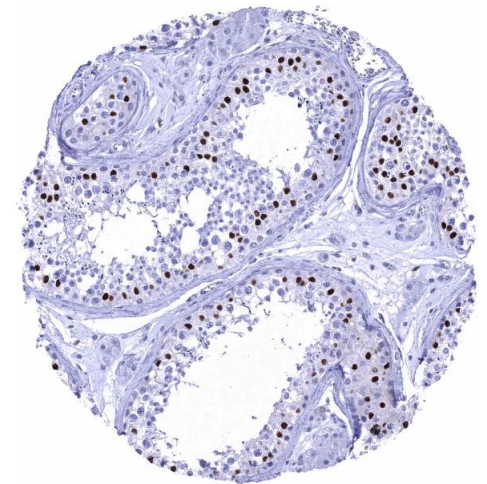
Storage: 4 °C,-20 °C,-80 °C

Storage Comment: Antibody with azide - store at 2 to 8 °C. Antibody without azide - store at -20 to -80 °C. Antibody is stable for 24 months. Non- hazardous.



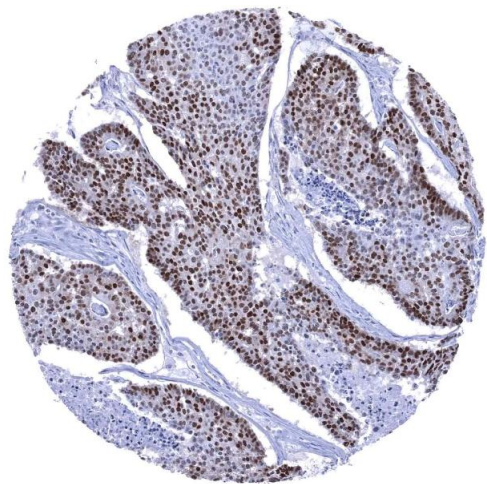
Immunohistochemistry

Image 1. Duodenum mucosa



Immunohistochemistry

Image 2. Testis Strong SOX9 staining of Sertoli cells



Immunohistochemistry

Image 3. Esophagus Squamous cell carcinoma with strong SOX9 immunostaining of most tumor cells