



[Go to Product page](#)

Datasheet for ABIN7477790

## ELAVL1 Protein (AA 1-326) (GST tag)

### 1 Image

#### Overview

Quantity:	2 µg
Target:	ELAVL1
Protein Characteristics:	AA 1-326
Origin:	Human
Source:	Wheat germ
Protein Type:	Recombinant
Purification tag / Conjugate:	This ELAVL1 protein is labelled with GST tag.
Application:	Western Blotting (WB), ELISA, Antibody Array (AA), Affinity Purification (AP)

#### Product Details

Purpose:	ELAVL1 (Human) Recombinant Protein (P01)
Sequence:	MSNGYEDHMA EDCRGDIGRT NLIVNYLPQN MTQDELRS LF SSIGEVESAK LIRDKVAGHS LGYGFVNYVT AKDAERAIN T L NGLRLQSKT IKVSYARPSS EVIKDANLYI SGLPRTMTQK DVEDMFSRFG RIINSRVLVD QTTGLSRGVA FIRFDKRSEA EEAITSFN GH KPPGSSEPIT VKFAANPNQN KNVALLS QLY HSPARRFGGP VHHQAQRFRF SPMGVDHMSG LSGVNVPGNA SSGWCIFIYN LGQDADEGIL WQMFPGF GAV TNVKVIRDFN TNKCKGFGFV TMTNYEEAAM AIASLNGYRL GDKILQVSFK TNKSHK
Characteristics:	Human ELAVL1 full-length ORF ( NP_001410.2, 1 a.a. - 326 a.a.) recombinant protein with GST-tag at N-terminal.
Purification:	in vitro wheat germ expression system

## Target Details

Target:	ELAVL1
Alternative Name:	ELAVL1 ( <a href="#">ELAVL1 Products</a> )
Background:	Full Gene Name: ELAV (embryonic lethal, abnormal vision, Drosophila)-like 1 (Hu antigen R) Synonyms: ELAV1,HUR,Hua,MelG
Gene ID:	1994
Pathways:	<a href="#">AMPK Signaling</a>

## Application Details

Application Notes:	Optimal working dilution should be determined by the investigator.
Comment:	Preparation method: in vitro, wheat germ expression system Product Quality tested by: 12.5% SDS-PAGE Stained with Coomassie Blue.
Restrictions:	For Research Use only

## Handling

Buffer:	50 mM Tris-HCl, 10 mM reduced Glutathione, pH =8.0 in the elution buffer.
Handling Advice:	Aliquot to avoid repeated freezing and thawing.
Storage:	-80 °C
Storage Comment:	Best use within three months from the date of receipt of this protein.

## Images

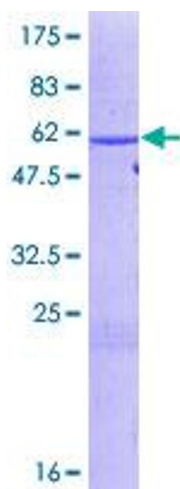


Image 1.