



[Go to Product page](#)

Datasheet for ABIN7477806

## XPO1 Protein (AA 1-1071) (GST tag)

1 Image

1 Publication

### Overview

Quantity:	2 µg
Target:	XPO1
Protein Characteristics:	AA 1-1071
Origin:	Human
Source:	Wheat germ
Protein Type:	Recombinant
Purification tag / Conjugate:	This XPO1 protein is labelled with GST tag.
Application:	Western Blotting (WB), ELISA, Antibody Array (AA), Affinity Purification (AP)

### Product Details

Purpose:	XPO1 (Human) Recombinant Protein (P01)
Sequence:	MPAIMTMLAD HAARQLLDFS QKLDINLLDN VVNCLYHGEG AQQRMAQEV L THLKEHPDAW TRVDTILEFS QNMNTKYYGL QILENVIKTR WKILPRNQCE GIKKYVVGLI IKTSSDPTCV EKEKVYIGKL NMVLVQILKQ EWPKHWPTFI SDIVGASRTS ESPCQNNMVI LKLLSEEVFD FSSGQITQVK SKHLKDSMCN EFSQIFQLCQ FVMENSQNAP LVHATLETL L RFLNWIPLGY IFETKLISL IYKFLNVPMF RNVSLKCLTE IAGVSVSQYE EQFVTLF L TMMQLKQMLPL NTNIRLAYS N GKDDEQNF I Q NLSLFLCTFL KEHDQLIEKR LNLRETLMEA LHYMLLVSEV EETEIFKICL EYWNHLAAEL YRESPFSTSA SPLLSGSQHF DVPPRRQLYL PMLFKVRLLM VSRMAKPEEV LVVENDQGEV VREFMKD TDS INLYKNMRET LVYLTHLDYV DTERIMTEKL HNQVNGTEWS WKNLNTLCWA IGSISGAMHE EDEKRFLVTV IKDLLGLCEQ KRGKDNKAI I ASNIMYIVGQ YPRFLRAHWK FLKTVV NKL FEFMHETHDGV QDMACDTFIK IAQKCRRH FV QVQVGEVMPF IDEILNNINT IICDLQPQV HTFYEA VGYM IGAQTDQTVQ EHLIEKYMLL

## Product Details

---

PNQVWDSIIQ QATKNVDILK DPETVKQLGS ILKTNVRACK AVGHPPFVIQL GRIYLDMLNV  
YKCLSENISA AIQANGEMVT KQPLIRSMRT VKRETLKLIS GWVSRSNPQ MVAENFVPPL  
LDAVLIDYQR NVPAAREPEV LSTMAIIVNK LGGHITAEIP QIFDAVFECT LNMINKDFEE  
YPEHRTNFFL LLQAVNSHCF PAFLAIPPTQ FKLVLDSIHW AFKHTMRNVA DTGLQILFTL  
LQNVAQEEAA AQSFYQTYFC DILQHIFSVV TDTSHTAGLT MHASILAYMF NLVEEGKIST  
SLNPGNPVNN QIFLQEYVAN LLKSAFPHLQ DAQVKLFVTG LFSLNQDIPA FKEHLRDFLV  
QIKEFAGEDT SDLFLEEREI ALRQADEEKH KRQMSVPGIF NPHEIPEEMC D

Characteristics: Human XPO1 full-length ORF ( AAH32847.1, 1 a.a. - 1071 a.a.) recombinant protein with GST-tag at N-terminal.

Purification: in vitro wheat germ expression system

## Target Details

---

Target: XPO1

Alternative Name: XPO1 ([XPO1 Products](#))

Background: Full Gene Name: exportin 1 (CRM1 homolog, yeast)  
Synonyms: CRM1,DKFZp686B1823

Gene ID: 7514

Pathways: [M Phase](#)

## Application Details

---

Application Notes: Optimal working dilution should be determined by the investigator.

Comment: Preparation method: in vitro, wheat germ expression system  
Product Quality tested by: 12.5% SDS-PAGE Stained with Coomassie Blue.

Restrictions: For Research Use only

## Handling

---

Buffer: 50 mM Tris-HCl, 10 mM reduced Glutathione, pH =8.0 in the elution buffer.

Handling Advice: Aliquot to avoid repeated freezing and thawing.

Storage: -80 °C

Storage Comment: Best use within three months from the date of receipt of this protein.

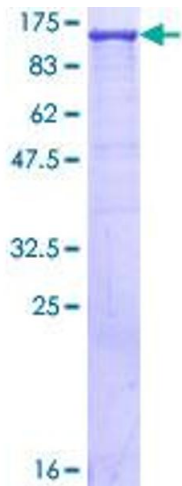
## Publications

---

Product cited in: Du, Bialkowska, McConnell, Yang: "SUMOylation regulates nuclear localization of Krüppel-like factor 5." in: **The Journal of biological chemistry**, Vol. 283, Issue 46, pp. 31991-2002, (2008) ([PubMed](#)).

## Images

---



**Image 1.**