



[Go to Product page](#)

Datasheet for ABIN7477815

LAPTM4A Protein (AA 1-233) (GST tag)

1 Image

Overview

Quantity:	2 µg
Target:	LAPTM4A
Protein Characteristics:	AA 1-233
Origin:	Human
Source:	Wheat germ
Protein Type:	Recombinant
Purification tag / Conjugate:	This LAPTM4A protein is labelled with GST tag.
Application:	ELISA, Western Blotting (WB), Affinity Purification (AP), Antibody Array (AA)

Product Details

Purpose:	LAPTM4A (Human) Recombinant Protein (P01)
Sequence:	MVSMSFKRNR SDRFYSTRCC GCCHVRTGTI ILGTWYMVVN LLMAILLTV E VTHPNSMPAV NIQYEVIGNY YSSERMADNA CVLFAVSVLM FIISSMLVYG AISYQVGWLI PFFCYRLDFD VLSCLVAISS LTYLPRIKEY LDQLPDFPYK DLLLALDSSC LLFIVLVFFA LFIIFKAYLI NCVWNCYKYI NNRNVPEIAV YPAFEAPPQY VLPTYEMAVK MPEKEPPPPY LPA
Characteristics:	Human LAPTM4A full-length ORF (NP_055528.1, 1 a.a. - 233 a.a.) recombinant protein with GST-tag at N-terminal.
Purification:	in vitro wheat germ expression system

Target Details

Target:	LAPTM4A
---------	---------

Target Details

Alternative Name:	LAPTM4A (LAPTM4A Products)
Background:	Full Gene Name: lysosomal protein transmembrane 4 alpha Synonyms: HUMORF13,KIAA0108,LAPTM4,MBNT,Mtrp
Gene ID:	9741
NCBI Accession:	NM_014713

Application Details

Application Notes:	Optimal working dilution should be determined by the investigator.
Comment:	Preparation method: in vitro, wheat germ expression system Product Quality tested by: 12.5% SDS-PAGE Stained with Coomassie Blue.
Restrictions:	For Research Use only

Handling

Buffer:	50 mM Tris-HCl, 10 mM reduced Glutathione, pH =8.0 in the elution buffer.
Handling Advice:	Aliquot to avoid repeated freezing and thawing.
Storage:	-80 °C
Storage Comment:	Best use within three months from the date of receipt of this protein.

Images

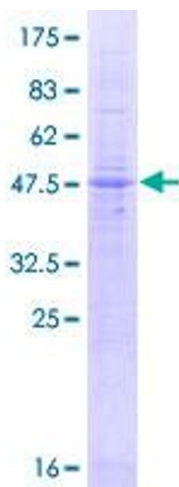


Image 1.