



[Go to Product page](#)

Datasheet for ABIN7477822

## PES1 Protein (AA 1-588) (GST tag)

### 1 Image

#### Overview

Quantity:	2 µg
Target:	PES1
Protein Characteristics:	AA 1-588
Origin:	Human
Source:	Wheat germ
Protein Type:	Recombinant
Purification tag / Conjugate:	This PES1 protein is labelled with GST tag.
Application:	ELISA, Western Blotting (WB), Affinity Purification (AP), Antibody Array (AA)

#### Product Details

Purpose:	PES1 (Human) Recombinant Protein (P02)
Sequence:	<p>MGGLEKKKYE RGSATNYITR NKARKKLQLS LADFRRLCIL KGIYPHEPKH KKKVNGKSTA  ARTFYLIKDI RLLHEPIVN KFREYKVFVR KLRKAYGKSE WNTVERLKDN KPNYKLDHII  KERYPTFIDA LRDLDDALSM CFLFSTFPRT GKCHVQTIQL CRRLTVEFMH YIIAARLRK  VFLSIKGIYY QAEVLGQPIV WITPYAFSHD HPTDVDYRVM ATFTEFYTTL LGFVNFRLYQ  LLNLHYPPKL EGQAQAEAKA GEGTYALDSE SCMEKLAALS ASLARVVVPA TEEAEVDEF  PTDGEMSAQE EDRRKELEAQ EKHKKLFEG LKFFLNREVPR EALAFIIRSF GGEVSWDKSL  CIGATYDVTD SRITHQIVDR PGQQTSVIGR CYVQPQWVFD SVNARLLLVPV AEYFSGVQLP  PHLSPFVTEK EGDYVPPEKL KLLALQRGED PGNLNESEEE EEEDDNEGD GDEEGENEEE  EEDAEAGSEK EEEARLALE EQRMEGKKPR VMAGTLKLED KQRLAQEEES EAKRLAIMMM  KKREKYLYQK IMFGKRRKIR EANKLAEKRK AHDEAVRSEK KAKKARPE</p>
Characteristics:	Human PES1 full-length ORF ( NP_055118.1, 1 a.a. - 588 a.a.) recombinant protein with GST-tag

## Product Details

---

at N-terminal.

Purification: in vitro wheat germ expression system

## Target Details

---

Target: PES1

Alternative Name: PES1 ([PES1 Products](#))

Background: Full Gene Name: pescadillo homolog 1, containing BRCT domain (zebrafish)  
Synonyms: PES

Gene ID: 23481

NCBI Accession: [NM\\_014303](#)

## Application Details

---

Application Notes: Optimal working dilution should be determined by the investigator.

Comment: Preparation method: in vitro, wheat germ expression system  
Product Quality tested by: 12.5% SDS-PAGE Stained with Coomassie Blue.

Restrictions: For Research Use only

## Handling

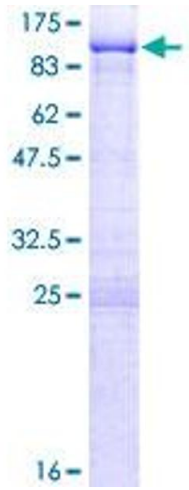
---

Buffer: 50 mM Tris-HCl, 10 mM reduced Glutathione, pH =8.0 in the elution buffer.

Handling Advice: Aliquot to avoid repeated freezing and thawing.

Storage: -80 °C

Storage Comment: Best use within three months from the date of receipt of this protein.



**Image 1.**