



[Go to Product page](#)

Datasheet for ABIN7478844

Mouse anti-Human IgA Antibody

1 Image

Overview

Quantity:	0.1 mg
Target:	IgA
Reactivity:	Human
Host:	Mouse
Clonality:	Monoclonal
Application:	ELISA, Immunohistochemistry (Paraffin-embedded Sections) (IHC (p))

Product Details

Immunogen:	human IgA
Clone:	AD2-947
Isotype:	IgG1
Specificity:	The mouse monoclonal antibody AD2.947 reacts with human IgA1 and IgA2.
Purification:	Purified by sequential steps of physicochemical fractionation (differential precipitation and solid-phase chromatography methods).

Target Details

Target:	IgA
Abstract:	IgA Products
Background:	Immunoglobulin A (IgA) is the major immunoglobulin class in body secretions that protects against infections of the mucous membranes lining the mouth, airways, and digestive tract. Its serum concentration is approximately 0.2 g/l and biological survival (T1/2 in plasma) 6 days.

Target Details

Plasma IgA is predominantly monomeric (160 kDa) and of the IgA1 subclass, and is mostly produced in the bone marrow. Over half of IgA produced by the intestinal lamina propria plasmocytes is in oligomeric form and 35 % of it is IgA2.,Immunoglobulin A

Application Details

Application Notes: Optimal working dilution should be determined by the investigator.

Comment: Matching Isotype Control: ABIN457433

Restrictions: For Research Use only

Handling

Format: Liquid

Concentration: 1 mg/mL

Buffer: Phosphate buffered saline (PBS), pH 7.4, 15 mM sodium azide

Preservative: Sodium azide

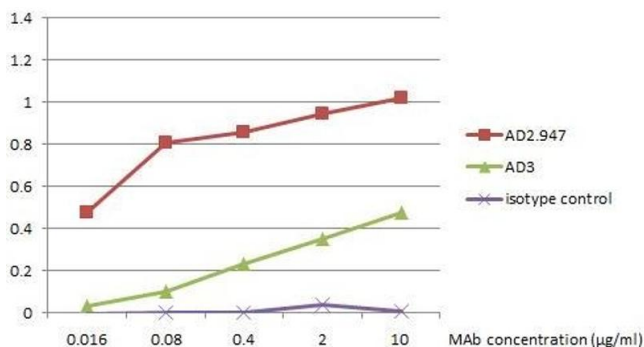
Precaution of Use: This product contains Sodium azide: a POISONOUS AND HAZARDOUS SUBSTANCE which should be handled by trained staff only.

Handling Advice: Do not freeze.

Storage: 4 °C

Storage Comment: Store at 2-8°C. Do not freeze.

Images



ELISA

Image 1. ELISA analysis of IgA in 1000x diluted human plasma using mouse monoclonal antibodies AD2.947 and AD3 (0.016 - 10 µg/mL).