

Datasheet for ABIN7478932

**Butyrylcholinesterase Protein (BCHE) (AA 1-141, full length)
(His tag)**[Go to Product page](#)**2** Images

Overview

Quantity:	100 µg
Target:	Butyrylcholinesterase (BCHE)
Protein Characteristics:	AA 1-141, full length
Origin:	Dog
Source:	Yeast
Protein Type:	Recombinant
Purification tag / Conjugate:	This Butyrylcholinesterase protein is labelled with His tag.
Application:	ELISA

Product Details

Sequence:	NTDQSFPGFP GSEMWNPN TD LSEDCLYLVN WIPTPKPKNA TVMIWIYGGG FQTGTSSLPV YDGKFLARVE RVIVVSVNYR VGALGFLALP GNPEAPGNLG LFDQQLALQW VQKNIAAFGG NPKSVTLFGE SAGAGSVGLH L
Specificity:	Canis familiaris (Dog) (Canis lupus familiaris)
Characteristics:	Please inquire if you are interested in this recombinant protein expressed in E. coli, mammalian cells or by baculovirus infection. Be aware about differences in price and lead time.
Purity:	> 90 %

Target Details

Target:	Butyrylcholinesterase (BCHE)
Alternative Name:	Cholinesterase (BCHE) (BCHE Products)

Target Details

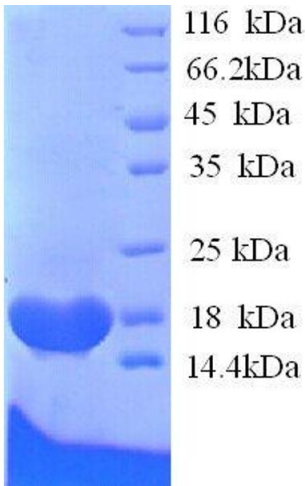
Background:	Recommended name: Cholinesterase. EC= 3.1.1.8. Alternative name(s): Acylcholine acylhydrolase Butyrylcholine esterase Choline esterase II Pseudocholinesterase
Molecular Weight:	17.1 kD
UniProt:	P32750
Pathways:	Peptide Hormone Metabolism

Application Details

Comment:	The yeast protein expression system is the most economical and efficient eukaryotic system for secretion and intracellular expression. A protein expressed by the mammalian cell system is of very high-quality and close to the natural protein. But the low expression level, the high cost of medium and the culture conditions restrict the promotion of mammalian cell expression systems. The yeast protein expression system serve as a eukaryotic system integrate the advantages of the mammalian cell expression system. A protein expressed by yeast system could be modified such as glycosylation, acylation, phosphorylation and so on to ensure the native protein conformation. It can be used to produce protein material with high added value that is very close to the natural protein. Our proteins produced by yeast expression system has been used as raw materials for downstream preparation of monoclonal antibodies.
Restrictions:	For Research Use only

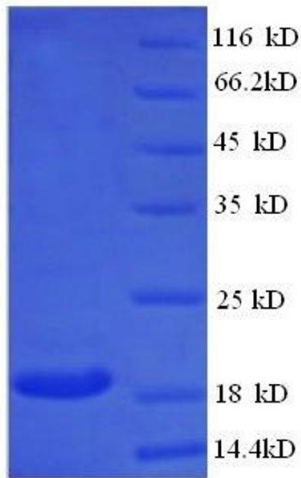
Handling

Format:	Lyophilized
Concentration:	0.2-2 mg/mL
Buffer:	Tris-based buffer, 50 % glycerol
Handling Advice:	Repeated freezing and thawing is not recommended. Store working aliquots at 4 °C for up to one week
Storage:	-20 °C
Storage Comment:	Store at -20 °C, for extended storage, conserve at -20 °C or -80 °C.



SDS-PAGE

Image 1. Butyrylcholinesterase (BCHE) (AA 1-141), (full length) protein (His tag)



SDS-PAGE

Image 2. Protein expressed in E.coli.