

Datasheet for ABIN7479020

**KLKB1 Protein (AA 391-638) (His tag)**[Go to Product page](#)**1** Image

## Overview

Quantity:	100 µg
Target:	KLKB1
Protein Characteristics:	AA 391-638
Origin:	Rat
Source:	Yeast
Protein Type:	Recombinant
Purification tag / Conjugate:	This KLKB1 protein is labelled with His tag.
Application:	ELISA

## Product Details

Sequence:	IVGGTNSSLG EWPWQVSLQV KLVSQNHMCG GSIIGRQWIL TAAHCFDGIP YPDVWRIYGG ILNLSEITNK TPFSSIKELI IHQKYKMSEG SYDIALIKLQ TPLNYTEFQK PICLPSKADT NTIYTNCWVT GWGYTKERGE TQNILQKATI PLVPNEECQK KYRDYVITKQ MICAGYKEGG IDACKGDSGG PLVCKHSGRW QLVGITSWGE GCARKEQPGV YTKVAEYIDW ILEKIQSSKE RALETSPA
Specificity:	Rattus norvegicus (Rat)
Characteristics:	Please inquire if you are interested in this recombinant protein expressed in E. coli, mammalian cells or by baculovirus infection. Be aware about differences in price and lead time.
Purity:	> 90 %

## Target Details

Target:	KLKB1
Alternative Name:	Plasma kallikrein (Klkb1) ( <a href="#">KLKB1 Products</a> )
Background:	<p>Recommended name: Plasma kallikrein.</p> <p>EC= 3.4.21.34.</p> <p>Alternative name(s): Fletcher factor Kininogenin Plasma prekallikrein Cleaved into the following 2 chains: 1.</p> <p>Plasma kallikrein heavy chain 2.</p> <p>Plasma kallikrein light chain</p>
Molecular Weight:	29.8 kD
UniProt:	<a href="#">P14272</a>
Pathways:	<a href="#">Complement System</a> , <a href="#">Brown Fat Cell Differentiation</a>

## Application Details

Comment:	<p>The yeast protein expression system is the most economical and efficient eukaryotic system for secretion and intracellular expression. A protein expressed by the mammalian cell system is of very high-quality and close to the natural protein. But the low expression level, the high cost of medium and the culture conditions restrict the promotion of mammalian cell expression systems. The yeast protein expression system serve as a eukaryotic system integrate the advantages of the mammalian cell expression system. A protein expressed by yeast system could be modiflicated such as glycosylation, acylation, phosphorylation and so on to ensure the native protein conformation. It can be used to produce protein material with high added value that is very close to the natural protein. Our proteins produced by yeast expression system has been used as raw materials for downstream preparation of monoclonal antibodies.</p>
Restrictions:	For Research Use only

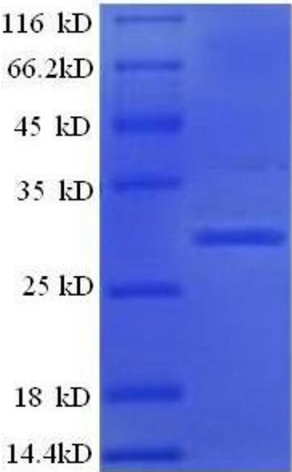
## Handling

Format:	Lyophilized
Concentration:	0.2-2 mg/mL
Buffer:	Tris-based buffer, 50 % glycerol
Handling Advice:	Repeated freezing and thawing is not recommended. Store working aliquots at 4 °C for up to one week

Handling

Storage:	-20 °C
Storage Comment:	Store at -20 °C, for extended storage, conserve at -20 °C or -80 °C.

Images



**SDS-PAGE**

**Image 1.** Kallikrein B, Plasma (Fletcher Factor) 1 (KLKB1) (AA 391-638) protein (His tag)