

Datasheet for ABIN7479048

SERPINB2 Protein (AA 1-416, full length) (His tag)[Go to Product page](#)**1** Image

Overview

Quantity:	100 µg
Target:	SERPINB2
Protein Characteristics:	AA 1-416, full length
Origin:	Rat
Source:	Yeast
Protein Type:	Recombinant
Purification tag / Conjugate:	This SERPINB2 protein is labelled with His tag.
Application:	ELISA

Product Details

Sequence:	MEELSMANTM FALNLLKQIE QSNSTQNIFI SPWSISSTLA IVFLGAQANT EEQMAKVLNF DKIGSYDLTP GNPENFHGCD FAQHIQRDNY PVAIQQAQAR DKIHSAFSSL SSTINTPRLG DYLLESANKL FGEKSARFKE EYIQRCKKYY STEPEAVDFL ECANEARKKI NSWVKTQTKG EIPNLLPEGS VDEDTKMVLV NTIYFKGRWK TPFQKRLNGL YPFRVNLNES KPVQMMYLRE KLNIGYIKDL KTQILELPYI GNISMFLLLP DEIEDSSTGL EMLEREINFD NFNKWISKET LDEDDVLVYI PKFKLAQNYE LKPILQRMGM EDAFNKGKAD FSGMSESNDL FLSEVFHQAT VDVNEEGTVA AGGTGAVMTG RTGHGGPQFV ADHPFLFFIM NNITRTILFV GRFSSP
Specificity:	Rattus norvegicus (Rat)
Characteristics:	Please inquire if you are interested in this recombinant protein expressed in E. coli, mammalian cells or by baculovirus infection. Be aware about differences in price and lead time.
Purity:	> 90 %

Target Details

Target:	SERPINB2
Alternative Name:	Plasminogen Activator Inhibitor 2 Type A (Serpib2) (SERPINB2 Products)
Target Type:	Amino Acid
Background:	Recommended name: Plasminogen activator inhibitor 2 type A. Short name= PAI-2. Short name= PAI2A. Alternative name(s): Serpin B2
Molecular Weight:	49.2 kD
UniProt:	P29524
Pathways:	Autophagy

Application Details

Comment:	The yeast protein expression system is the most economical and efficient eukaryotic system for secretion and intracellular expression. A protein expressed by the mammalian cell system is of very high-quality and close to the natural protein. But the low expression level, the high cost of medium and the culture conditions restrict the promotion of mammalian cell expression systems. The yeast protein expression system serve as a eukaryotic system integrate the advantages of the mammalian cell expression system. A protein expressed by yeast system could be modified such as glycosylation, acylation, phosphorylation and so on to ensure the native protein conformation. It can be used to produce protein material with high added value that is very close to the natural protein. Our proteins produced by yeast expression system has been used as raw materials for downstream preparation of monoclonal antibodies.
Restrictions:	For Research Use only

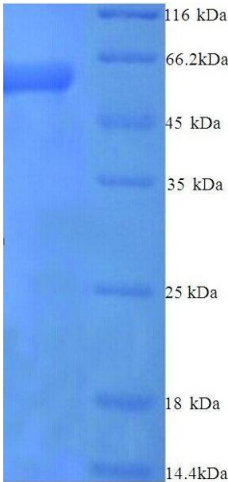
Handling

Format:	Lyophilized
Concentration:	0.2-2 mg/mL
Buffer:	Tris-based buffer, 50 % glycerol
Handling Advice:	Repeated freezing and thawing is not recommended. Store working aliquots at 4 °C for up to one week
Storage:	-20 °C

Handling

Storage Comment: Store at -20 °C, for extended storage, conserve at -20 °C or -80 °C.

Images



SDS-PAGE

Image 1. serpin Peptidase Inhibitor, Clade B (Ovalbumin), Member 2 (SERPINB2) (AA 1-416), (full length) protein (His tag)