

Datasheet for ABIN7479055

**Iba1 Protein (AA 2-147) (His tag)**[Go to Product page](#)**1** Image

## Overview

Quantity:	100 µg
Target:	Iba1 (IBA1)
Protein Characteristics:	AA 2-147
Origin:	Rat
Source:	Yeast
Protein Type:	Recombinant
Purification tag / Conjugate:	This Iba1 protein is labelled with His tag.
Application:	ELISA

## Product Details

Sequence:	SQSKDLQGG KAFGLLKAQQ EERLDGINKH FLDDPKYSSD EDLQSKLEAF KTKYMEFDLN GNGDIDIMSL KRMLEKLGVP KTHLELKKLI REVSSGSEET FSYSDFLRMM LGKRSAILRM ILMYEKNKE HQKPTGPPAK KAISELP
Specificity:	Rattus norvegicus (Rat)
Characteristics:	Please inquire if you are interested in this recombinant protein expressed in E. coli, mammalian cells or by baculovirus infection. Be aware about differences in price and lead time.
Purity:	> 90 %

## Target Details

Target:	Iba1 (IBA1)
Alternative Name:	Allograft inflammatory factor 1 (Aif1) ( <a href="#">IBA1 Products</a> )

## Target Details

Background: Recommended name: Allograft inflammatory factor 1.  
Short name= AIF-1.  
Alternative name(s): Ionized calcium-binding adapter molecule 1 MRF-1 Microglia response factor

UniProt: [P55009](#)

Pathways: [Smooth Muscle Cell Migration](#)

## Application Details

Comment: The yeast protein expression system is the most economical and efficient eukaryotic system for secretion and intracellular expression. A protein expressed by the mammalian cell system is of very high-quality and close to the natural protein. But the low expression level, the high cost of medium and the culture conditions restrict the promotion of mammalian cell expression systems. The yeast protein expression system serve as a eukaryotic system integrate the advantages of the mammalian cell expression system. A protein expressed by yeast system could be modiflicated such as glycosylation, acylation, phosphorylation and so on to ensure the native protein conformation. It can be used to produce protein material with high added value that is very close to the natural protein. Our proteins produced by yeast expression system has been used as raw materials for downstream preparation of monoclonal antibodies.

Restrictions: For Research Use only

## Handling

Format: Lyophilized

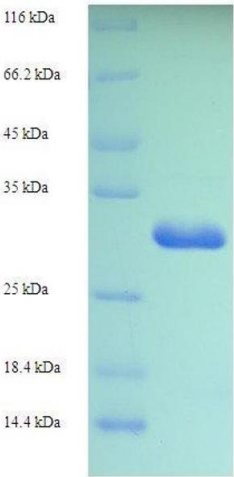
Concentration: 0.2-2 mg/mL

Buffer: Tris-based buffer, 50 % glycerol

Handling Advice: Repeated freezing and thawing is not recommended. Store working aliquots at 4 °C for up to one week

Storage: -20 °C

Storage Comment: Store at -20 °C, for extended storage, conserve at -20 °C or -80 °C.



SDS-PAGE

**Image 1.** SDS-PAGE of protein expressed in E. coli.