

Datasheet for ABIN7479162

YARS Protein (AA 2-528, full length) (GST tag)[Go to Product page](#)**1** Image

Overview

Quantity:	100 µg
Target:	YARS (Yars)
Protein Characteristics:	AA 2-528, full length
Origin:	Human
Source:	Escherichia coli (E. coli)
Protein Type:	Recombinant
Purification tag / Conjugate:	This YARS protein is labelled with GST tag.
Application:	ELISA

Product Details

Sequence:	GDAPSPEEKL HLITRNLQEV LGEEKLKEIL KERELKIYWG TATTGKPHVA YFVPMSKIAD FLKAGCEVTI LFADLHAYLD NMKAPWELLE LRVSYYENVI KAMLESIGVP LEKLKFIKGT DYQLSKEYTL DVYRLSSVVT QHDSKKAGAE VVKQVEHPLL SGLLYPGLQA LDEEYLKVDA QFGGIDQRKI FTFAEKYLPALGYSKRVHLM NPMVPGLTGS KMSSSEEEKS IDLLDRKEDV KKKLKKAFCF PGNVENNGVL SFIKHVLFPL KSEFVILRDE KWGGNKTYTA YVDLEKDFAA EVVHPGDLKN SVEVALNKLL DPIREKFNTP ALKKLASAAY PDPSKQKPMK KGPKNSEPE EVIPSRLDIR VGKIITVEKH PDADSLYVEK IDVGAEPRTP VVSGLVQFVP KEELQDRLVV VLCNLKPQKM RGVESQGMML CASIEGINRQ VEPLDPPAGS APGEHVFKG YEKGQPDEEL KPKKKVFEKL QADFKISEEC IAQWKQTNFM TKLGSISCKS LKGGNIS
Characteristics:	Please inquire if you are interested in this recombinant protein expressed in E. coli, mammalian cells or by baculovirus infection. Be aware about differences in price and lead time.
Purity:	95 %

Target Details

Target:	YARS (Yars)
Alternative Name:	Tyrosyl-tRNA synthetase, cytoplasmic protein (Yars Products)
Background:	<p>Catalyzes the attachment of tyrosine to tRNA(Tyr) in a two-step reaction: tyrosine is first activated by ATP to form Tyr-AMP and then transferred to the acceptor end of tRNA(Tyr)</p> <p>Defects in YARS are the cause of Charcot-Marie-Tooth disease dominant intermediate type C (CMTDIC) [MIM:608323]. CMTDIC is a form of Charcot-Marie-Tooth disease characterized by clinical and pathologic features intermediate between demyelinating and axonal peripheral neuropathies, and motor median nerve conduction velocities ranging from 25 to 45 m/sec</p>
Molecular Weight:	86.4 kD
UniProt:	P54577

Application Details

Comment:	<p>The yeast protein expression system is the most economical and efficient eukaryotic system for secretion and intracellular expression. A protein expressed by the mammalian cell system is of very high-quality and close to the natural protein. But the low expression level, the high cost of medium and the culture conditions restrict the promotion of mammalian cell expression systems. The yeast protein expression system serve as a eukaryotic system integrate the advantages of the mammalian cell expression system. A protein expressed by yeast system could be modified such as glycosylation, acylation, phosphorylation and so on to ensure the native protein conformation. It can be used to produce protein material with high added value that is very close to the natural protein. Our proteins produced by yeast expression system has been used as raw materials for downstream preparation of monoclonal antibodies.</p>
Restrictions:	For Research Use only

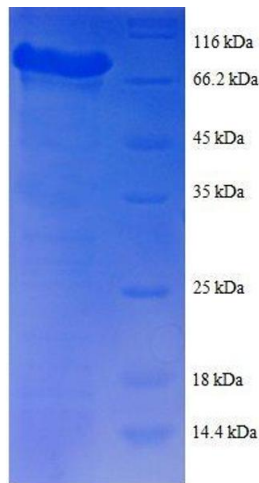
Handling

Format:	Lyophilized
Concentration:	0.2-2 mg/mL
Buffer:	Tris-based buffer, 50 % glycerol
Handling Advice:	Repeated freezing and thawing is not recommended. Store working aliquots at 4 °C for up to one week
Storage:	-20 °C

Handling

Storage Comment: Store at -20 °C for extended storage, conserve at -20 °C or -80 °C

Images



SDS-PAGE

Image 1. Tyrosyl-tRNA Synthetase (Yars) (AA 2-528), (full length) protein (GST tag)